



Texas Gulf Coast Regional Voluntary Organizations Active in Disaster

COOPERATION | COMMUNICATION | COORDINATION | COLLABORATION

SE Texas Flooding and May 16th Severe Storms Recovery Coordination Call

*please add your name, organization,
mobile phone, email, and the status
of your organization (Active/Standby)
and the resource/service you offer to the chat*



COOPERATION | COMMUNICATION | COORDINATION | COLLABORATION

Agenda

Welcome

name, organization, mobile phone, email

Status (active, stand-by) and resource/service

Course of Action / Period Objectives

Weather

Communication

Damage Assessment

Reports from Jurisdictions

Reports from Members and Guests

Closing Comments and Review of Actions for the Next Period.

Course of Action Period Objectives



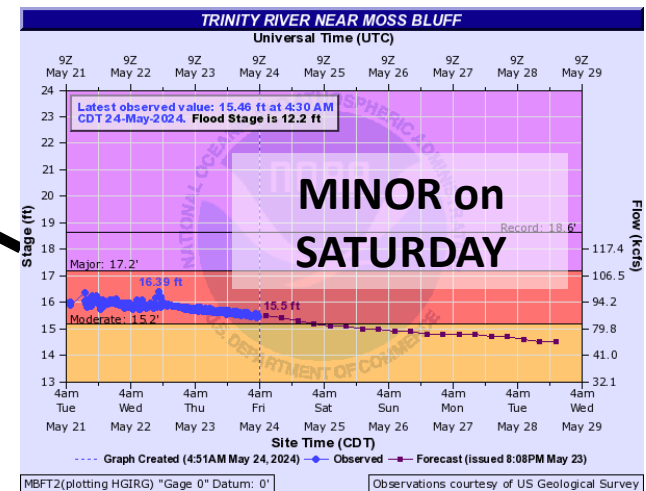
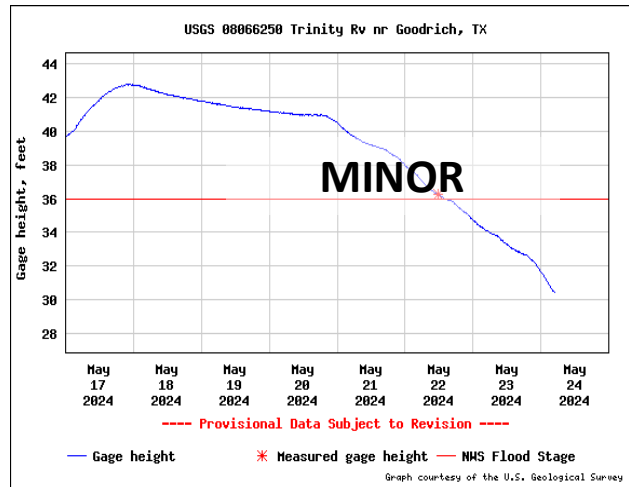
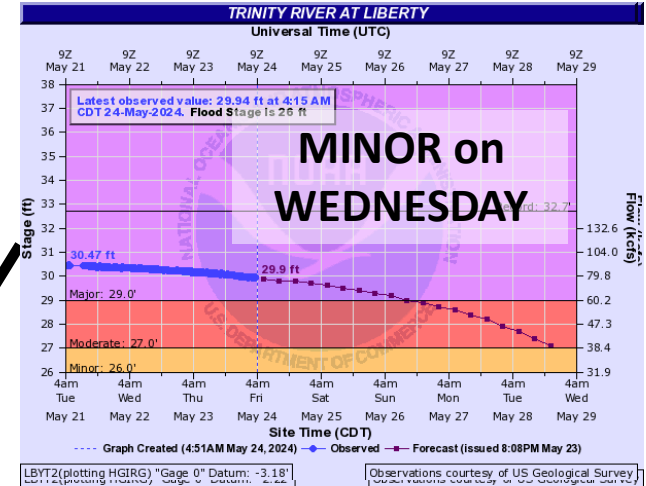
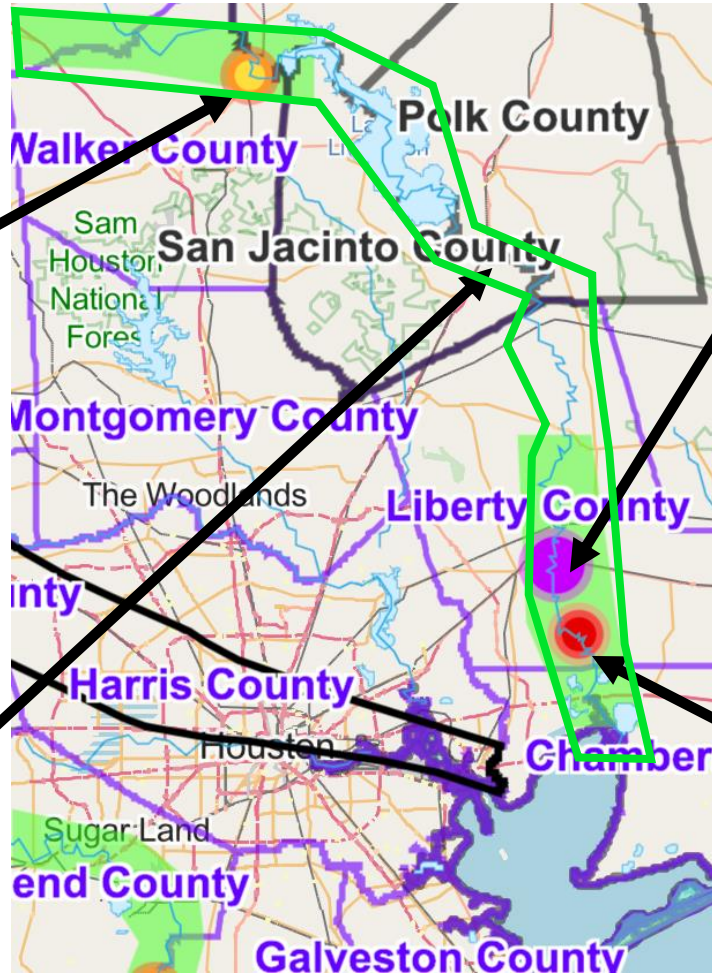
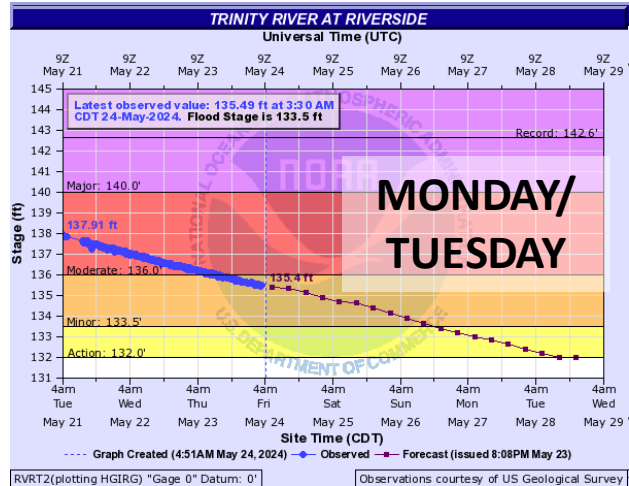
Course of Action / Objectives

1. Support Human Services
 - Volunteer Support
2. Build our Situational Awareness
 - SitReps
 - Encourage iStat, Crisis Cleanup, Connective
 - Damage assessment & identify unmet needs
3. Muck, Gut, Tarp Flooded Homes
Tarp Roofs, Remove Trees **BE STRATEGIC!**
 - Safety
 - Use Crisis Cleanup, identify jobs, record work
 - Report hours on SitRep
4. Manage Resources
 - Leave no individual, family, or community behind
 - TGCRVOAD to identify underserved communities
5. Transition to the LTRC

Weather & Flooding Brief

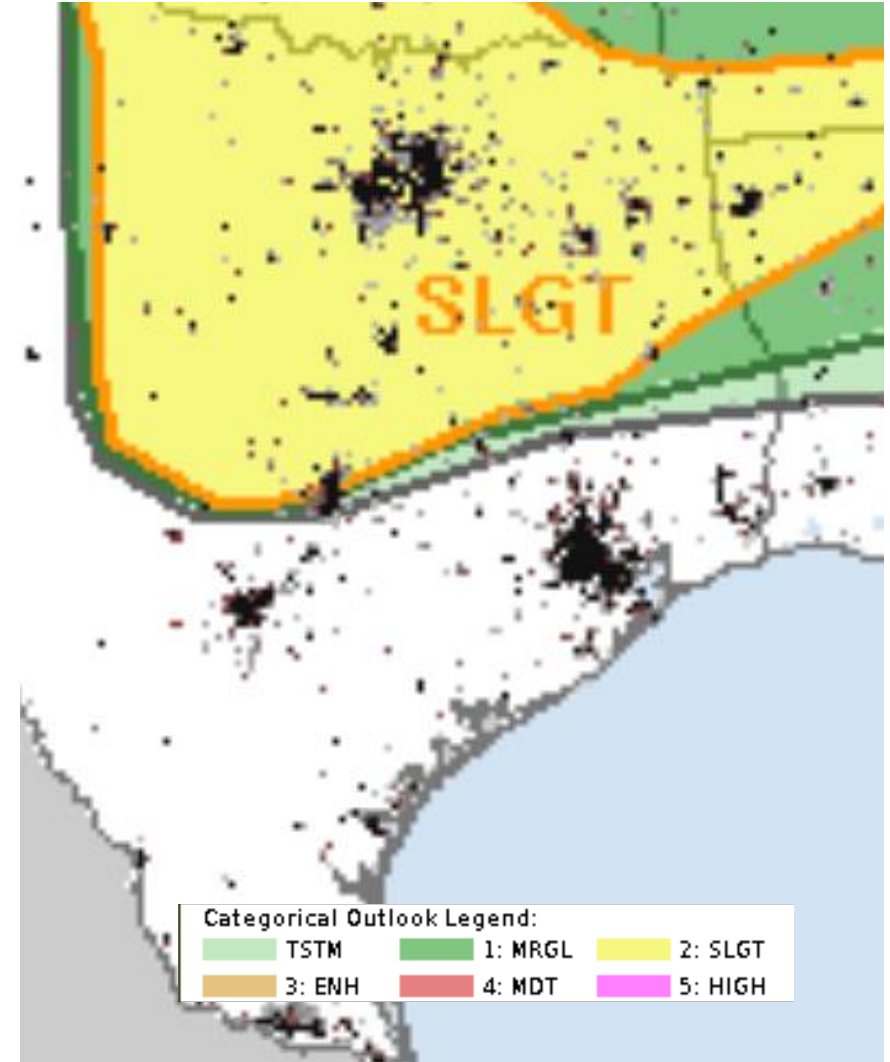


Trinity River Flooding



Weather for Responders

Today	92°/79°	☁ AM Clouds/PM Sun	📈 6%	🌀 SSE 18 mph
Sat 25	94°/79°	☀ Mostly Sunny	📈 17%	🌀 SSE 18 mph
Sun 26	94°/79°	☁ Partly Cloudy	📈 7%	🌀 S 18 mph
Mon 27	97°/76°	☁ Partly Cloudy	📈 20%	🌀 SE 15 mph
Tue 28	93°/76°	☁ Partly Cloudy	📈 17%	🌀 ESE 16 mph
Wed 29	88°/75°	☁⚡ Scattered Thunderstorms	📈 35%	🌀 ESE 16 mph
Thu 30	86°/76°	☁⚡ Scattered Thunderstorms	📈 50%	🌀 ESE 17 mph
Fri 31	88°/76°	☁⚡ Isolated Thunderstorms	📈 34%	🌀 SE 18 mph
Sat 01	87°/76°	☁⚡ Scattered Thunderstorms	📈 35%	🌀 SE 17 mph
Sun 02	88°/76°	☁ Partly Cloudy	📈 24%	🌀 SE 16 mph
Mon 03	90°/76°	☁ Partly Cloudy	📈 24%	🌀 SE 16 mph
Tue 04	91°/75°	☁ Partly Cloudy	📈 24%	🌀 SE 16 mph



Looking Ahead

Memorial Day Weekend Outlook

Day	Weather	Temperature	Heat Index
Friday	Sun with 30% chance of rain	86°-95°	99°-106°
Saturday	Sun	87°-96°	100°-107°
Sunday	Sun (HOT)	88°-96°	102°-110°
Monday	Sun (HOT)	88°-98°	102°-110°


Hot temperatures are expected over the holiday weekend, so heat safety will be a top priority.

- Stay hydrated
- Take frequent breaks from the heat
- Know the signs of heat exhaustion/heat stroke
- **LOOK before you LOCK your vehicle**

NATIONAL WEATHER SERVICE
Houston/Galveston, TX

ISSUED: 6:00PM -
Thursday, May 23, 2024

Houston's HOT!

Heat Exhaustion	Heat Stroke
<p>ACT FAST</p> <ul style="list-style-type: none">• Move to a cooler area• Loosen clothing• Sip cool water• Seek medical help if symptoms don't improve	<p>ACT FAST</p> <p>CALL 911</p> <ul style="list-style-type: none">• Move person to a cooler area• Loosen clothing and remove extra layers• Cool with water or ice
<p><i>Dizziness</i></p> <p><i>Thirst</i></p> <p><i>Heavy Sweating</i></p> <p><i>Nausea</i></p> <p><i>Weakness</i></p>	<p><i>Confusion</i></p> <p><i>Dizziness</i></p> <p><i>Becomes Unconscious</i></p>
	
<p><i>Heat exhaustion can lead to heat stroke.</i></p>	<p><i>Heat stroke can cause death or permanent disability if emergency treatment is not given.</i></p>
<p>Stay Cool, Stay Hydrated, Stay Informed!</p>	



Communication

Flyers



IMPACTED BY A DISASTER?
NEED HELP? For IMMEDIATE ASSISTANCE and access to help and resources
DIAL 2-1-1

SCAN ME FOR LINKS TO SERVICES

RECOVERY RESOURCES AND INFORMATION

CRISIS CLEANUP FOR HARRIS COUNTY RESIDENTS
832-509-2977

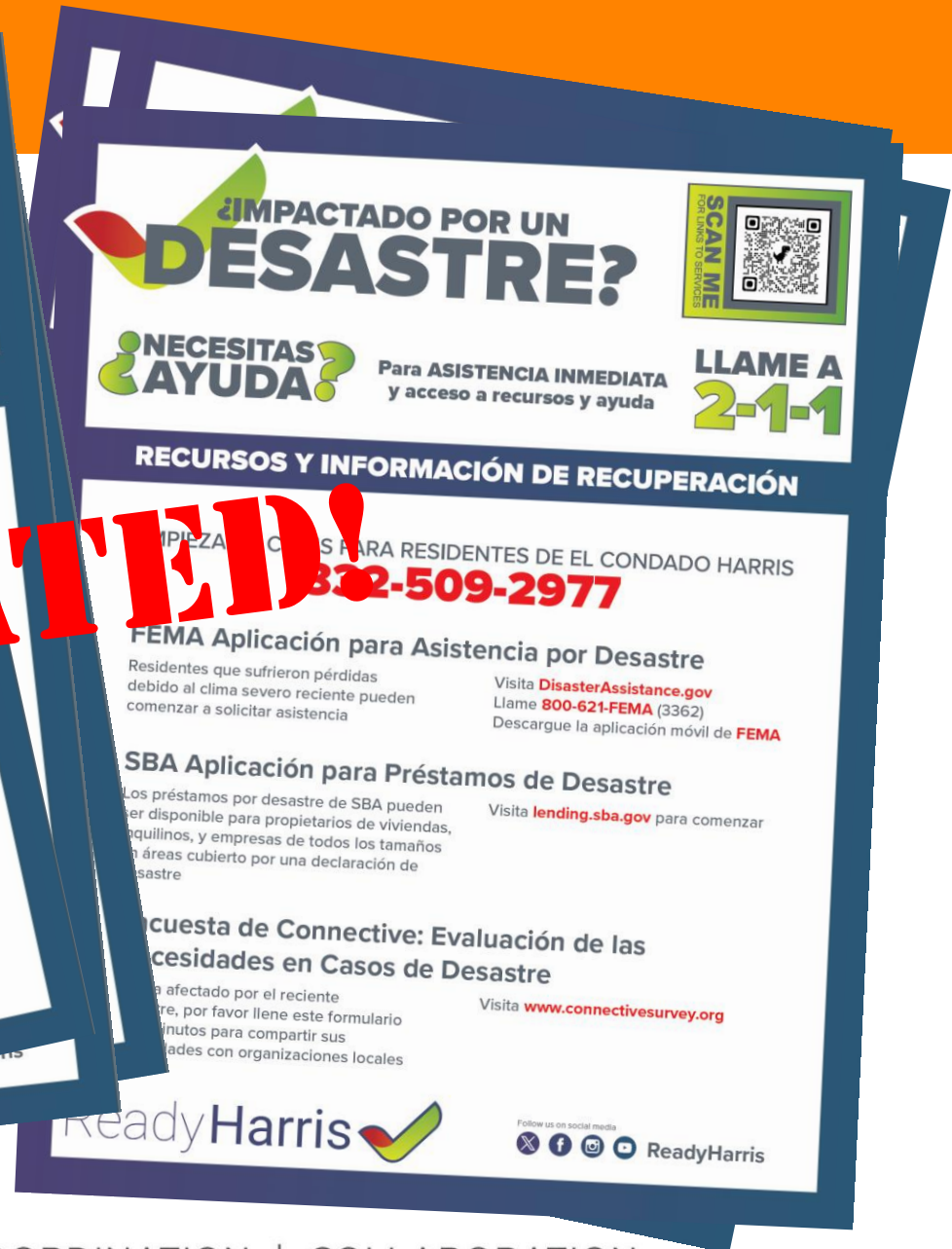
FEMA Disaster Assistance Application
Residents who sustained losses due to recent severe weather can begin applying for assistance
Visit www.fema.gov to download the FEMA App
Call 800-621-FEMA (3362)

SBA Disaster Loan Application
SBA disaster loans may be available to homeowners, renters, and businesses of all sizes in areas covered by a disaster declaration
Visit lending.sba.gov to get started

Connective Disaster Needs Assessment Survey
If you were impacted by the recent disaster, please fill out this 5 minute survey to share your needs with local non-profits
Visit www.connectivesurvey.org

Follow us on social media: X, Facebook, Instagram, YouTube, ReadyHarris

ReadyHarris



¿IMPACTADO POR UN DESASTRE?
¿NECESITAS AYUDA? Para ASISTENCIA INMEDIATA y acceso a recursos y ayuda
LLAME A 2-1-1

SCAN ME FOR LINKS TO SERVICES

RECURSOS Y INFORMACIÓN DE RECUPERACIÓN

PIEZA DE CRISIS PARA RESIDENTES DE EL CONDADO HARRIS
832-509-2977

FEMA Aplicación para Asistencia por Desastre
Residentes que sufrieron pérdidas debido al clima severo reciente pueden comenzar a solicitar asistencia
Visita DisasterAssistance.gov
Llame **800-621-FEMA (3362)**
Descargue la aplicación móvil de FEMA

SBA Aplicación para Préstamos de Desastre
Los préstamos por desastre de SBA pueden ser disponible para propietarios de viviendas, inquilinos, y empresas de todos los tamaños en áreas cubierto por una declaración de desastre
Visita lending.sba.gov para comenzar

Cuestionario de Connective: Evaluación de las Necesidades en Casos de Desastre
Si usted fue afectado por el reciente desastre, por favor llene este formulario de 5 minutos para compartir sus necesidades con organizaciones locales
Visita www.connectivesurvey.org

Follow us on social media: X, Facebook, Instagram, YouTube, ReadyHarris

ReadyHarris



TGCRVOAD.org/contact-us



SUBSCRIBE

JOIN OUR MAILING LIST


MEMBERS, PARTNERS and GUESTS



UNSUBSCRIBE

LEAVE OUR MAILING LIST

SUBSCRIBERS ONLY



JOIN US!

APPLY TO BECOME A MEMBER or PARTNER



JOIN A COMMITTEE

MEMBERS ONLY



RFA

REQUEST ASSISTANCE

MEMBERS, PARTNERS, and JURISDICTIONS



SITREP

SUBMIT A SITUATION REPORT

MEMBERS ONLY



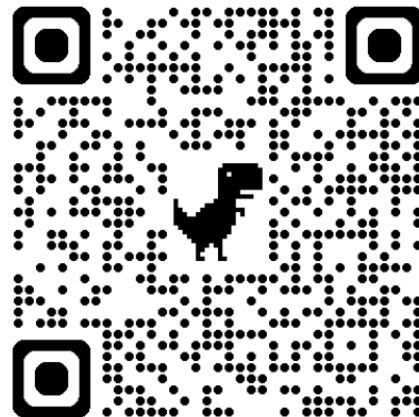
REQUEST TO MAKE A PRESENTATION



TGCRVOAD
PO Box 1491
BELLAIRE TX
77401



ORGANIZATION CHECK-IN



COOPERATION | COMMUNICATION | COORDINATION | COLLABORATION



Report Volunteer Hours

Required Documentation

Copy of the sign-in sheet

- *volunteer's name*
- *volunteer's title*
- *volunteer's function (required for professional services)*
- *date and hours worked*

Location of work

Work performed

Also known as a 214

TGCRVOAD SitRep, County OEM

Activation Level 1 - ACTIVATED!

Q | Member Logi

Texas Gulf Coast Regional
Voluntary Organizations
Active in Disaster

0 of 500 max characters

Report Volunteer Hours

Report volunteer hours. Required documentation includes a copy of the sign-in sheet, volunteer's name, title and function (required for professional services), date and hours worked. Location of work and work performed

0 of 500 max characters

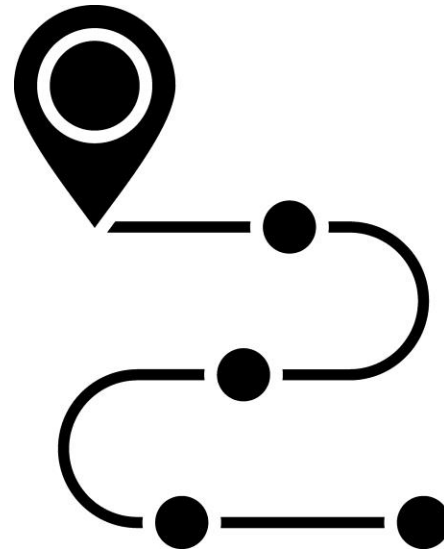
0 of 500 max characters

Attach Documents or Photos

Choose File no file selected

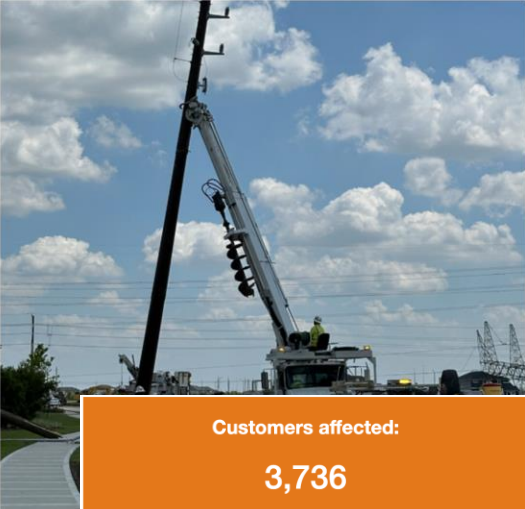
Max. file size: 100 MB.

Damage Assessment



COOPERATION | COMMUNICATION | COORDINATION | COLLABORATION

Power Restoration



Customers affected:
3,736



Customers restored in the last 24 hours:
43,124

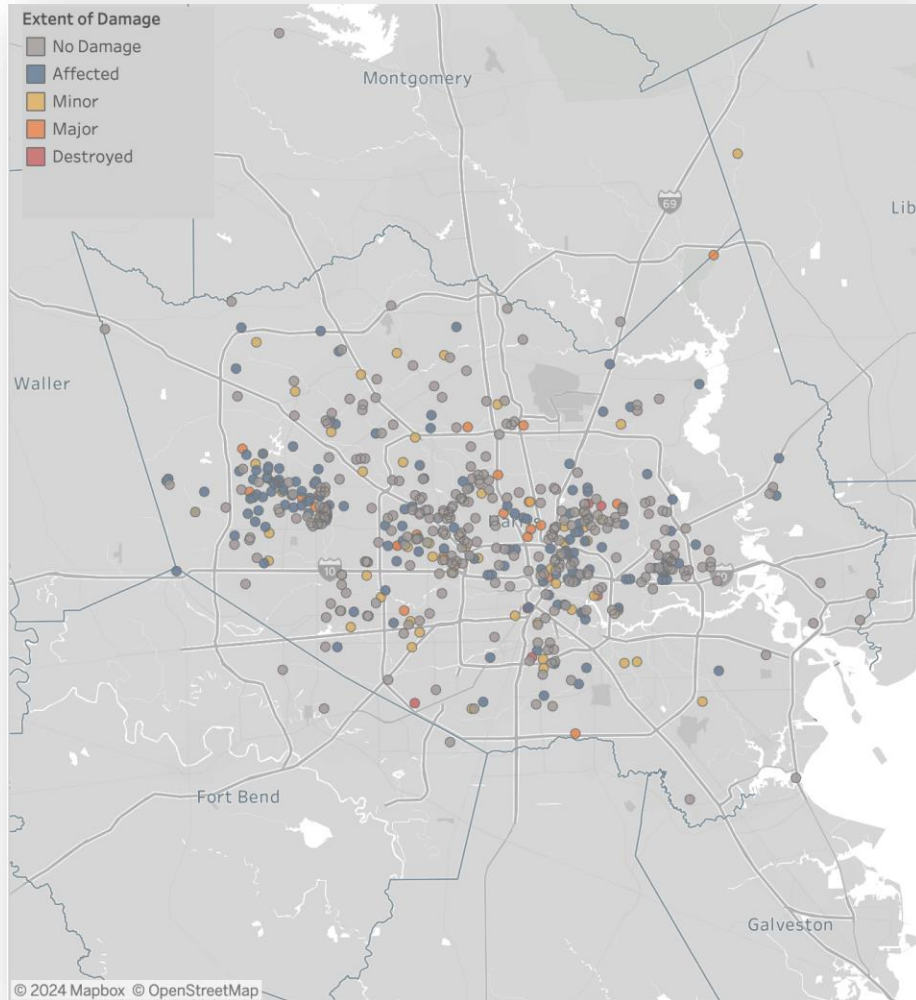


Active outages:
698

Outages restored in the last 24 hours:
2,732

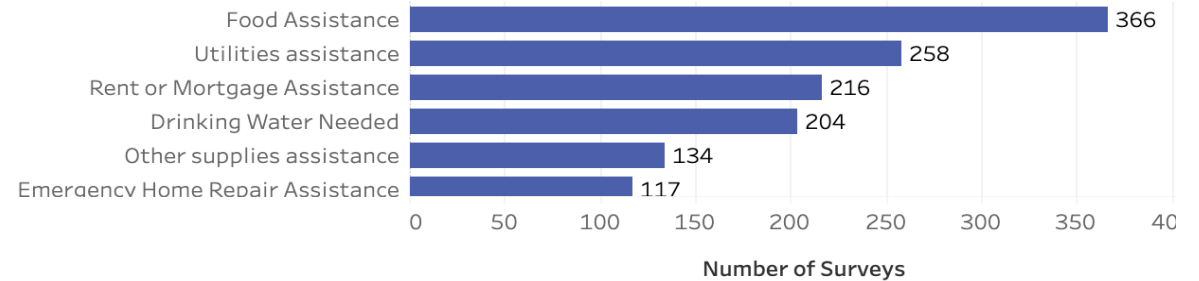


Connective Survey, 704

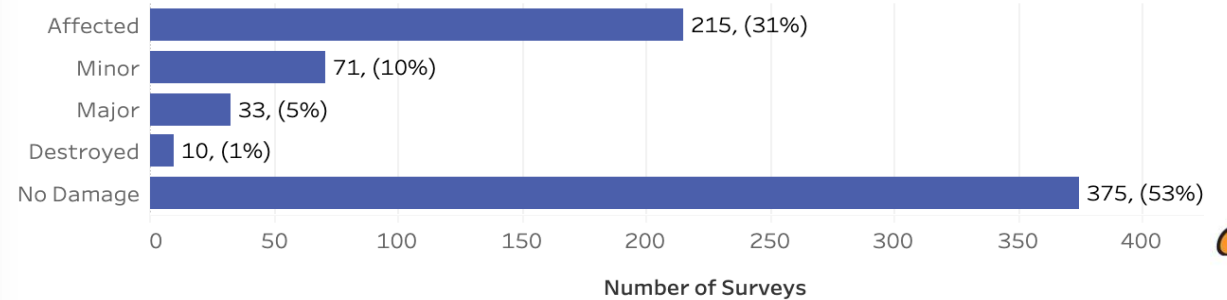


First Surveys 704
 Wind Damage 306 (104 Minor/Major)
 Flood Damage 64

Primary Household Needs



Extent of Home Damage

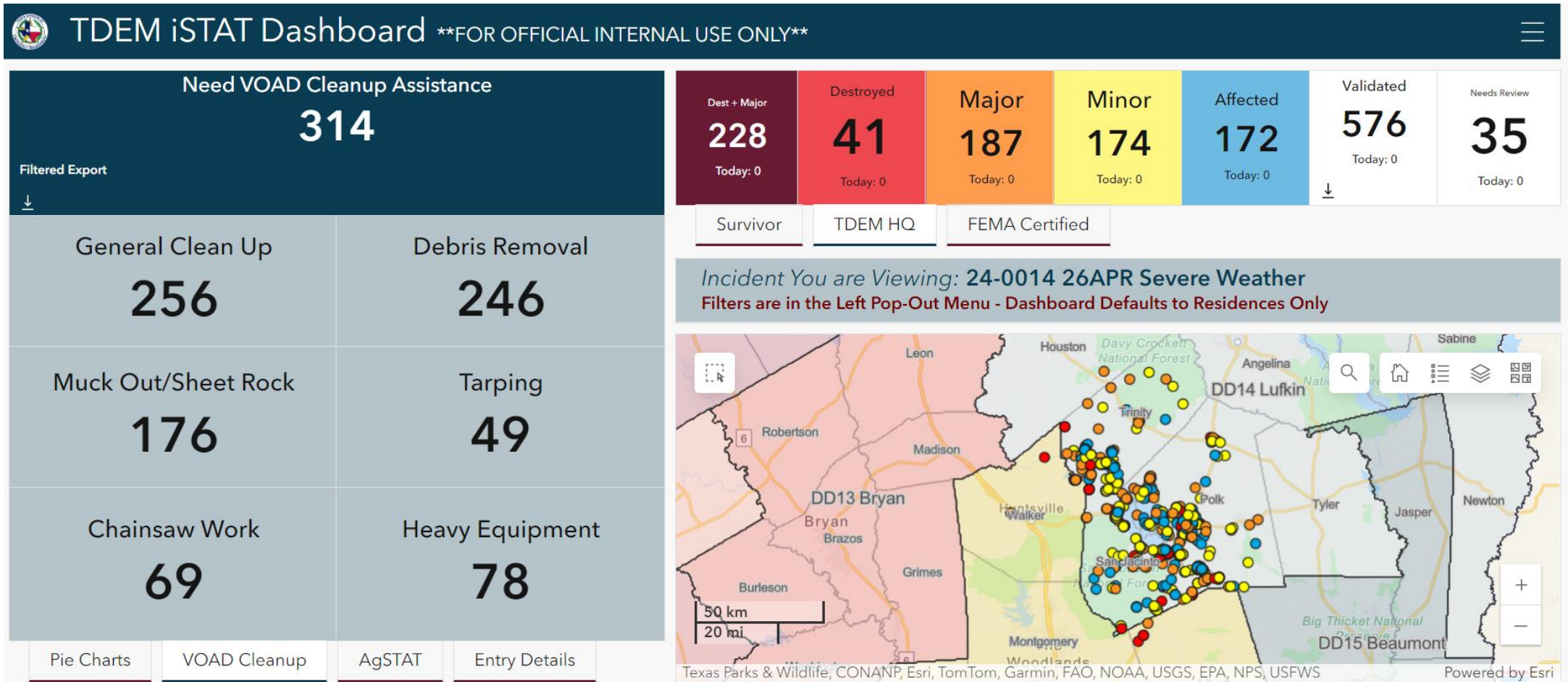


iSTAT - R4

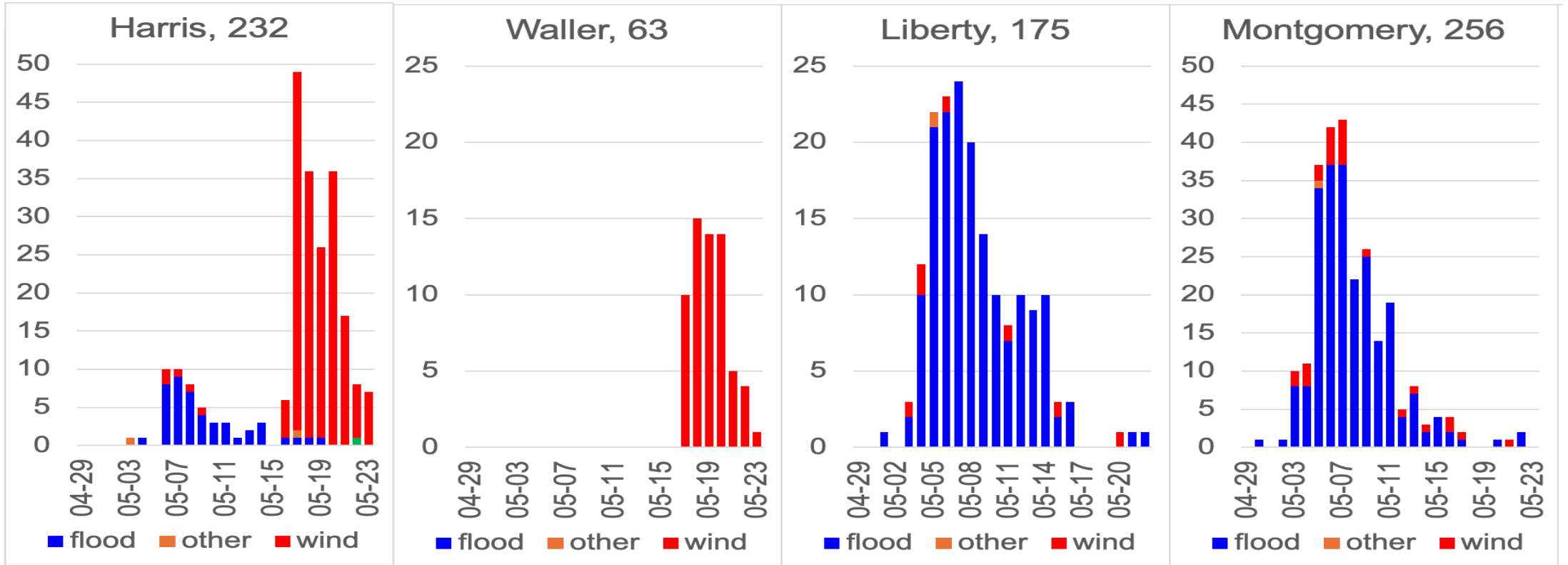
TDEM iSTAT Dashboard **FOR OFFICIAL INTERNAL USE ONLY**
☰

Need VOAD Cleanup Assistance 959		<table border="1" style="width: 100%; border-collapse: collapse;"> <tr> <td style="background-color: #4b0000; color: white; padding: 5px;"> <small>Dest + Major</small> 571 <small>Today: 1</small> </td> <td style="background-color: #c00000; color: white; padding: 5px;"> <small>Destroyed</small> 35 <small>Today: 0</small> </td> <td style="background-color: #ff8c00; color: white; padding: 5px;"> <small>Major</small> 536 <small>Today: 1</small> </td> <td style="background-color: #ffff00; color: black; padding: 5px;"> <small>Minor</small> 521 <small>Today: 0</small> </td> <td style="background-color: #00a0e3; color: white; padding: 5px;"> <small>Affected</small> 433 <small>Today: 0</small> </td> <td style="background-color: #e0e0e0; padding: 5px;"> <small>Validated</small> 1,529 <small>Today: 1</small> </td> <td style="background-color: #e0e0e0; padding: 5px;"> <small>Needs Review</small> 90 <small>Today: 0</small> </td> </tr> </table>							<small>Dest + Major</small> 571 <small>Today: 1</small>	<small>Destroyed</small> 35 <small>Today: 0</small>	<small>Major</small> 536 <small>Today: 1</small>	<small>Minor</small> 521 <small>Today: 0</small>	<small>Affected</small> 433 <small>Today: 0</small>	<small>Validated</small> 1,529 <small>Today: 1</small>	<small>Needs Review</small> 90 <small>Today: 0</small>
<small>Dest + Major</small> 571 <small>Today: 1</small>	<small>Destroyed</small> 35 <small>Today: 0</small>	<small>Major</small> 536 <small>Today: 1</small>	<small>Minor</small> 521 <small>Today: 0</small>	<small>Affected</small> 433 <small>Today: 0</small>	<small>Validated</small> 1,529 <small>Today: 1</small>	<small>Needs Review</small> 90 <small>Today: 0</small>									
<small>Filtered Export</small> ↓		<table border="1" style="width: 100%; border-collapse: collapse;"> <tr> <td style="background-color: #e0e0e0; padding: 5px;">Survivor</td> <td style="background-color: #1a3d4d; color: white; padding: 5px;">TDEM HQ</td> <td style="background-color: #e0e0e0; padding: 5px;">FEMA Certified</td> </tr> </table>							Survivor	TDEM HQ	FEMA Certified				
Survivor	TDEM HQ	FEMA Certified													
General Clean Up 718		Debris Removal 771					Muck Out/Sheet Rock 484		Tarping 163						
Chainsaw Work 304		Heavy Equipment 179					DD13 Bryan DD12 Austin DD15 Beaumont DD16 Houston		DD15 Beaumont DD16 Houston						
Pie Charts		VOAD Cleanup		AgSTAT		Entry Details		Incident You are Viewing: 24-0014 26APR Severe Weather Filters are in the Left Pop-Out Menu - Dashboard Defaults to Residences Only							

iSTAT – R3



Actionable iSTAT Reports



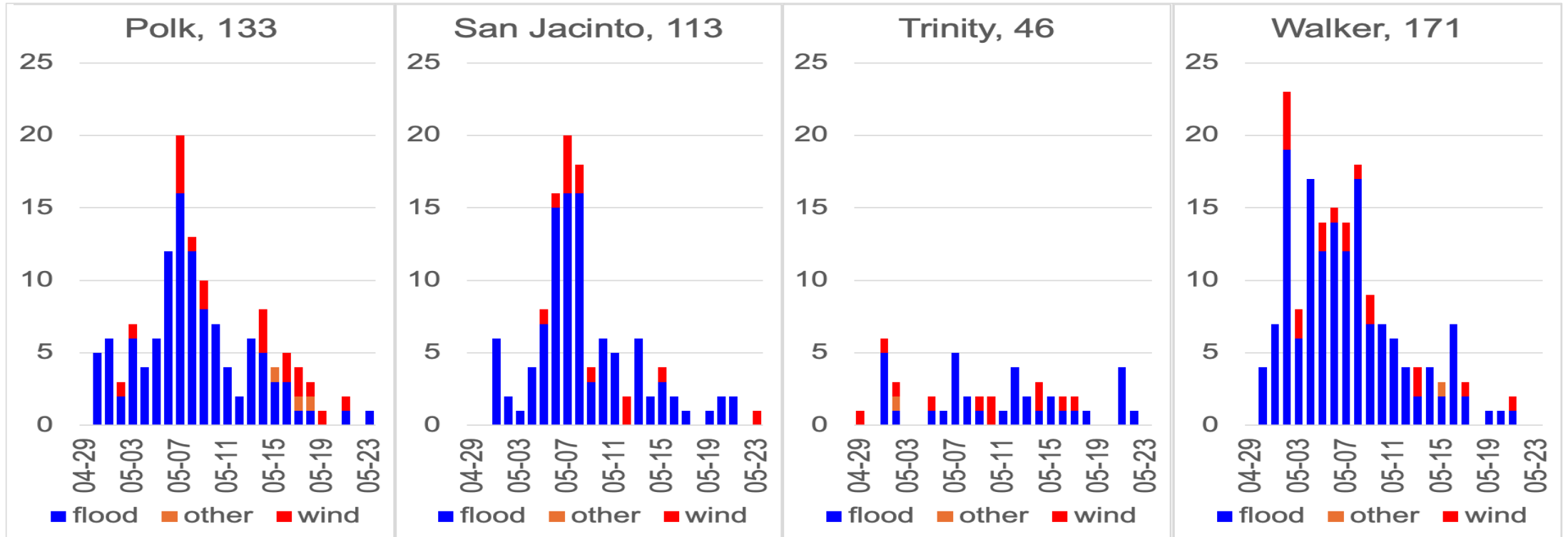
ACTIVE

ACTIVE

ACTIVE
MONITORING

TRANSITIONING

Actionable iSTAT Reports



**ACTIVE
MONITORING**

**ACTIVE
MONITORING**

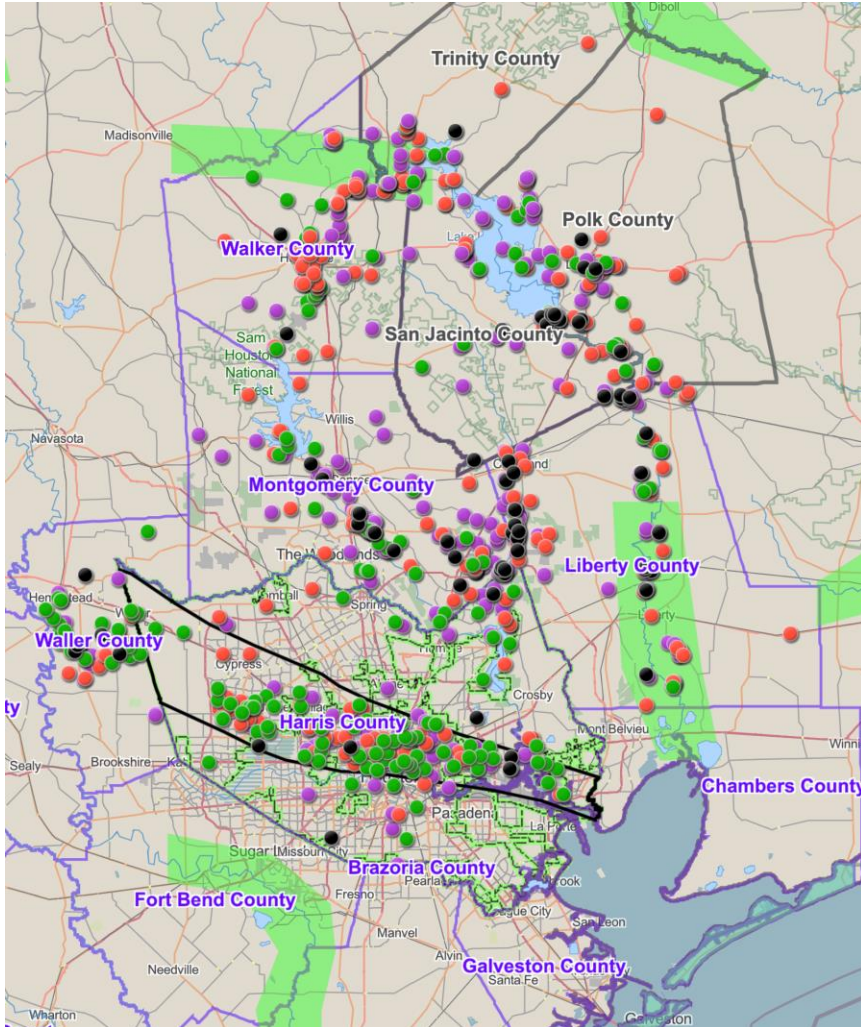
**ACTIVE
MONITORING**

ACTIVE



**TGCR
VOAD**

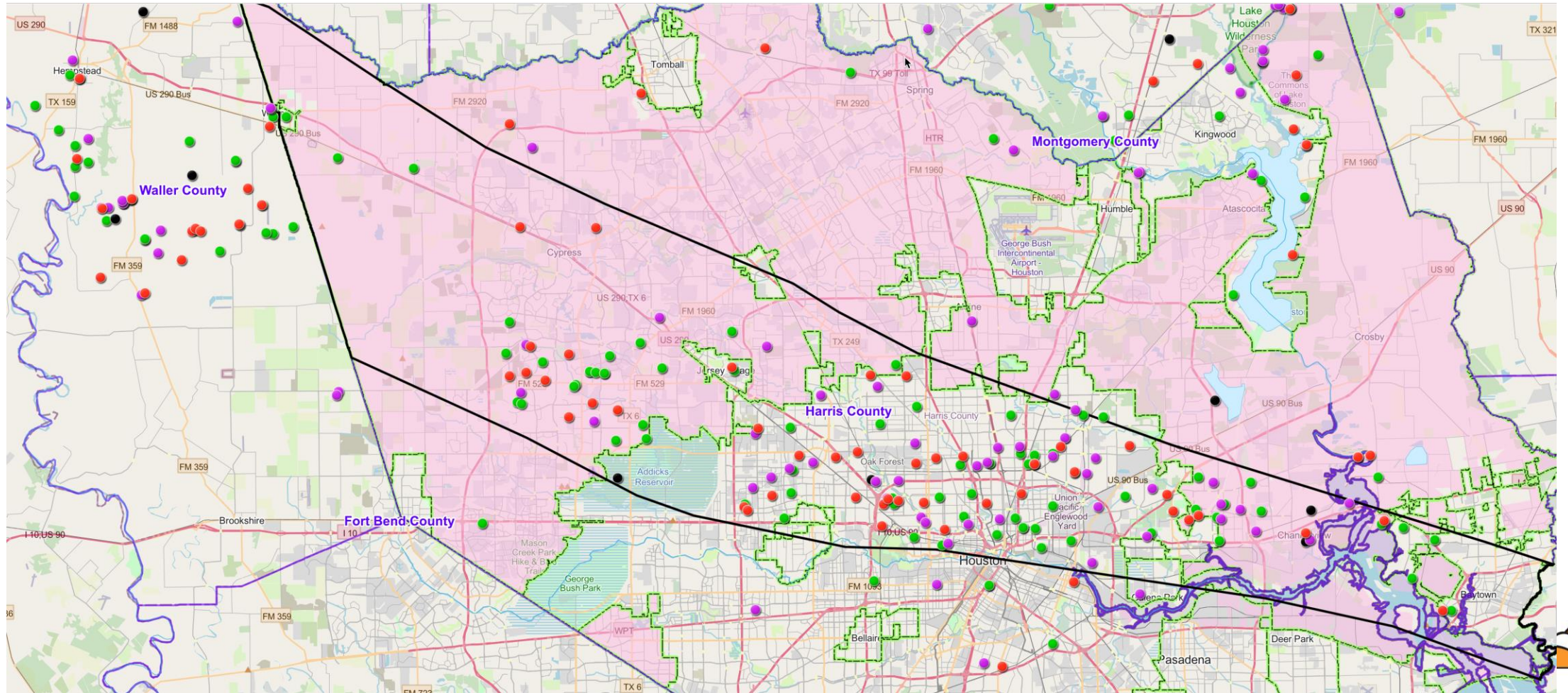
Actionable ISTAT Reports



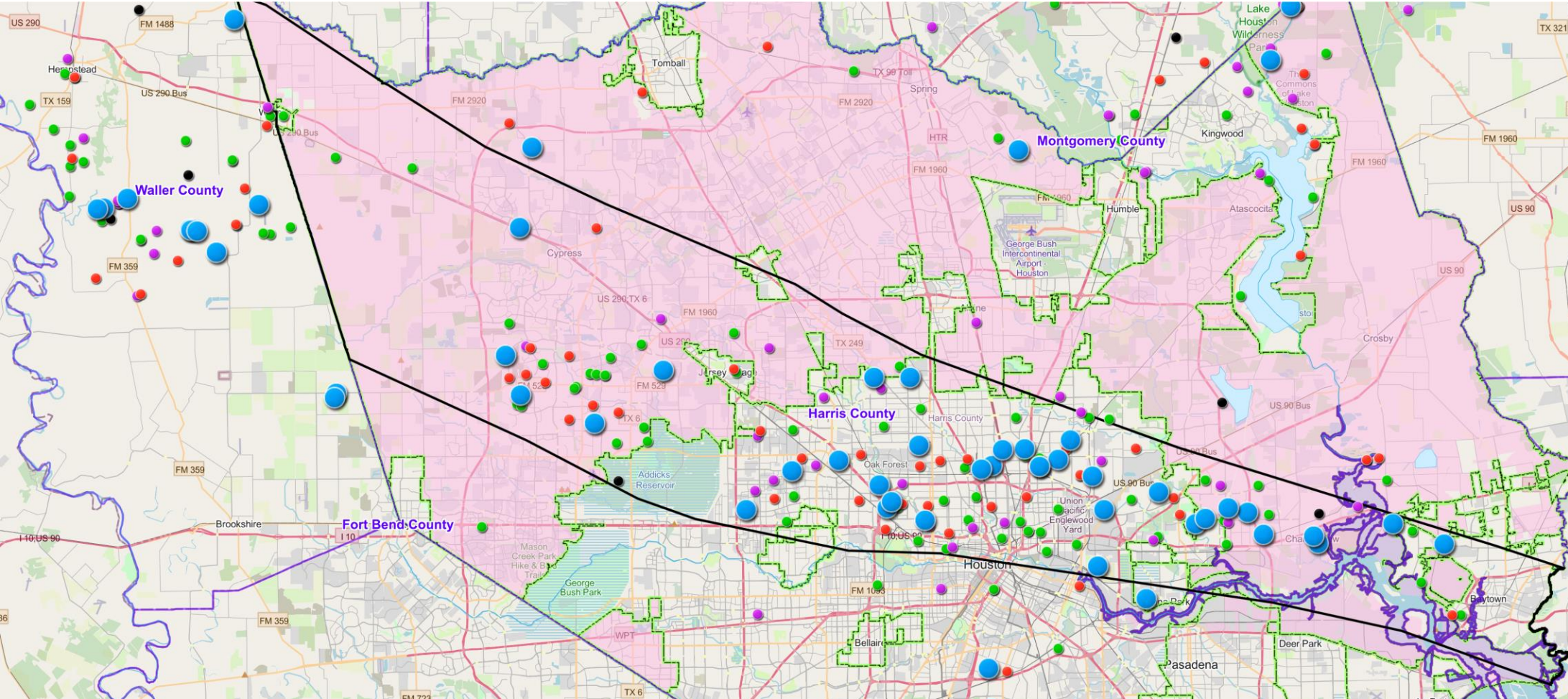
Damage Reports
VOAD (Shareable)
Filtered

2105
1273
1189

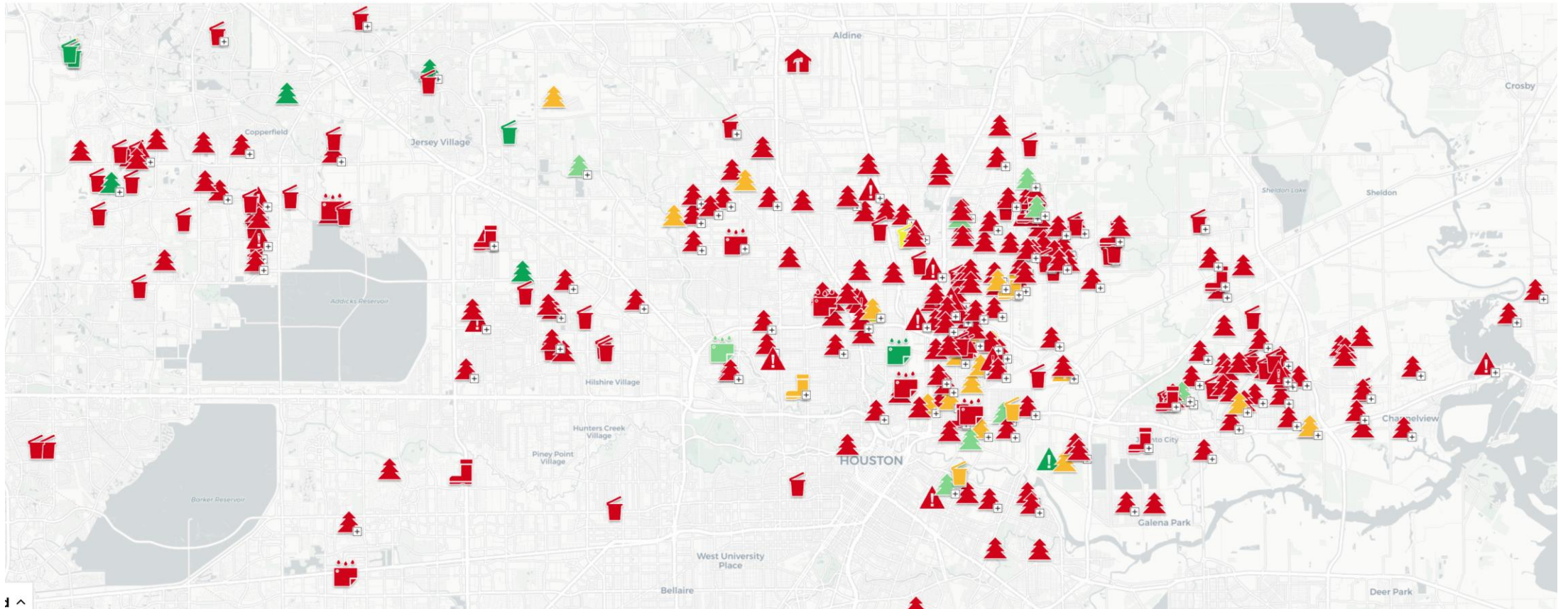
Waller and Harris County



Needs a Tarp

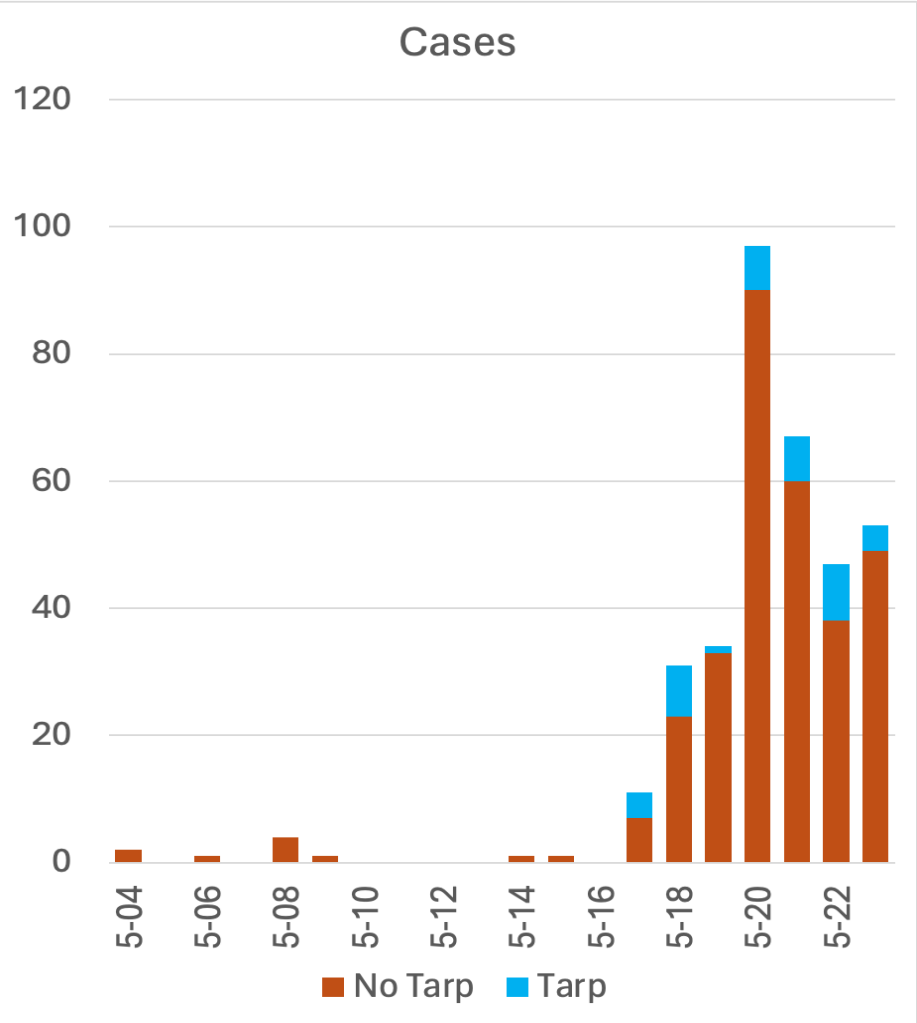


Crisis Cleanup (296 Harris)



COOPERATION | COMMUNICATION | COORDINATION | COLLABORATION

CrisisCleanup Cases



Does NOT Include the backlog of Spanish-speaking calls

74% need help w/trees

12% need tarps (40)

6% need help w/trees and tarps (19)

When CrisisCleanup Closes

The Phone number will not be answered

Call Downs Will Continue

Organizations Can

Claim Cases

Add Cases

Report Completions

Scheduled Closing

MAY

31

Tarps

You must submit a Sit Rep requesting tarps.
Please include the number of tarps and crews working over the next week.

Received 364, Allocated 200. Balance 164

RFAs

RFA Houston Foodbank

Non-Perishable Food Items:

Nutritional snacks - granola bars, nuts, trail mix, dried fruits pull-top
canned goods (veggies, fruits, soups, meats - tuna, chicken), MREs, cereal

Easy-to-eat fruits (“hand fruits”):

bananas, apples, oranges, pears, peaches, etc.

Beverages:

Water and shelf-stable drinks

Hygiene Products:

Soap, toothpaste, household and personal hygiene products

Baby Supplies:

Diapers and wipes

Bleach and Cleaning Supplies:

for storm cleanup and sanitation

RFA: Houston Foodbank

535 Portwall St
Houston, TX 77029

Donor Services: 713.547.8623
Main: 713.223.3700

Any consolidation of deliveries would be appreciated.

The Houston Foodbank is also requesting volunteers. Please see <https://www.houstonfoodbank.org/ways-to-give/give-time/volunteerwithhfb/>

RFA: Volunteers

- Houston Food Bank
- Spanish-speaking volunteer operators for Crisis Cleanup. This is a **CRITICAL NEED**. Organization must be registered in Crisis Cleanup
- Electricians
- Tarping Teams and Sawyer/Tarping Teams
- Organization to Partner with Connective for Telephone Surveys

Reports from Jurisdictions

Please State your Name and Jurisdiction

Reports from Members and Guests

Please State your Name and Organization

Coordination Calls Next Week

Tuesday 28th

Thursday 30th

9:00 AM – 9:50 AM



Texas Gulf Coast Regional Voluntary Organizations Active in Disaster

COOPERATION | COMMUNICATION | COORDINATION | COLLABORATION

See You Tuesday, 9 AM

*Be safe!
Check-ins
SitReps*

*Cooperation
Communication
Coordination
Collaboration*



COOPERATION | COMMUNICATION | COORDINATION | COLLABORATION

**IT'S A MARATHON,
NOT A SPRINT**

