



Texas Gulf Coast Regional Voluntary Organizations Active in Disaster

COOPERATION | COMMUNICATION | COORDINATION | COLLABORATION

SE Texas Flooding and May 16th Severe Storms Recovery Coordination Call

*please add your name, organization,
mobile phone, email, and the status
of your organization (Active/Standby)
and the resource/service you offer to the chat*



COOPERATION | COMMUNICATION | COORDINATION | COLLABORATION



Agenda

Welcome

name, organization, mobile phone, email

Status (active, stand-by) and resource/service

Course of Action / Period Objectives

Weather & Flooding

Communication

Damage Assessment

Reports from Jurisdictions

Reports from Members and Guests

Closing Comments and Review of Actions for the Next Period.



Course of Action Period Objectives

Course of Action / Objectives (WIND)

Build our Situational Awareness

- SitReps
- Encourage iStat, Crisis Cleanup, Connective
- Damage Assessment & Identify unmet needs
- Battle Rhythm

Tarp Roofs, Remove Trees

- Safety
- Use Crisis Cleanup, Identify jobs, Record work
- Report hours on SitRep

Support Human Services

- Cooling Centers, PODs

- Donations – Ice, Water, snacks - CoH
- Case Management

Manage Resources

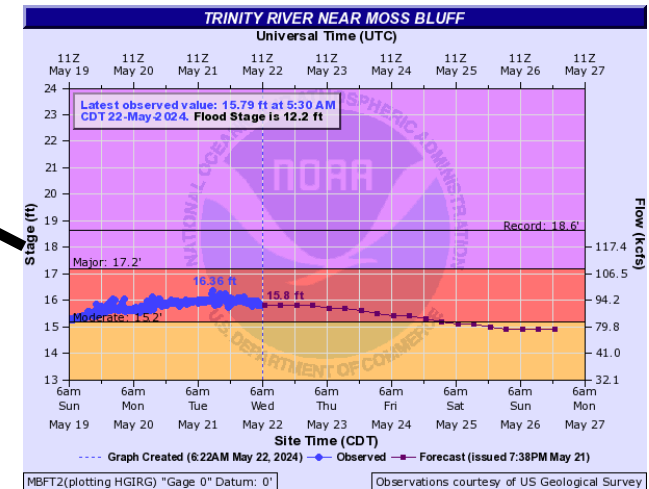
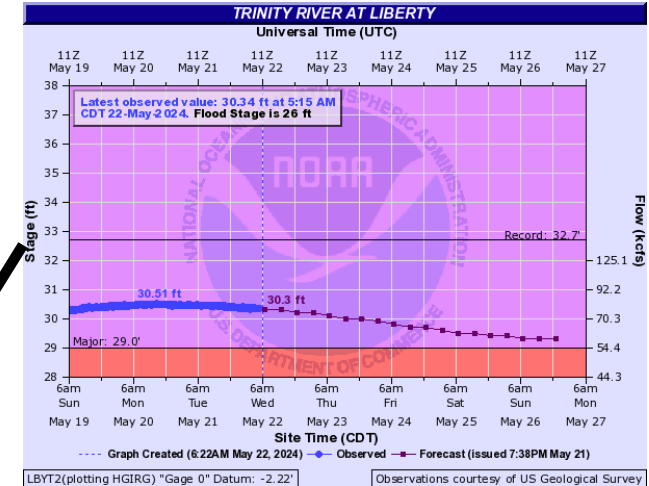
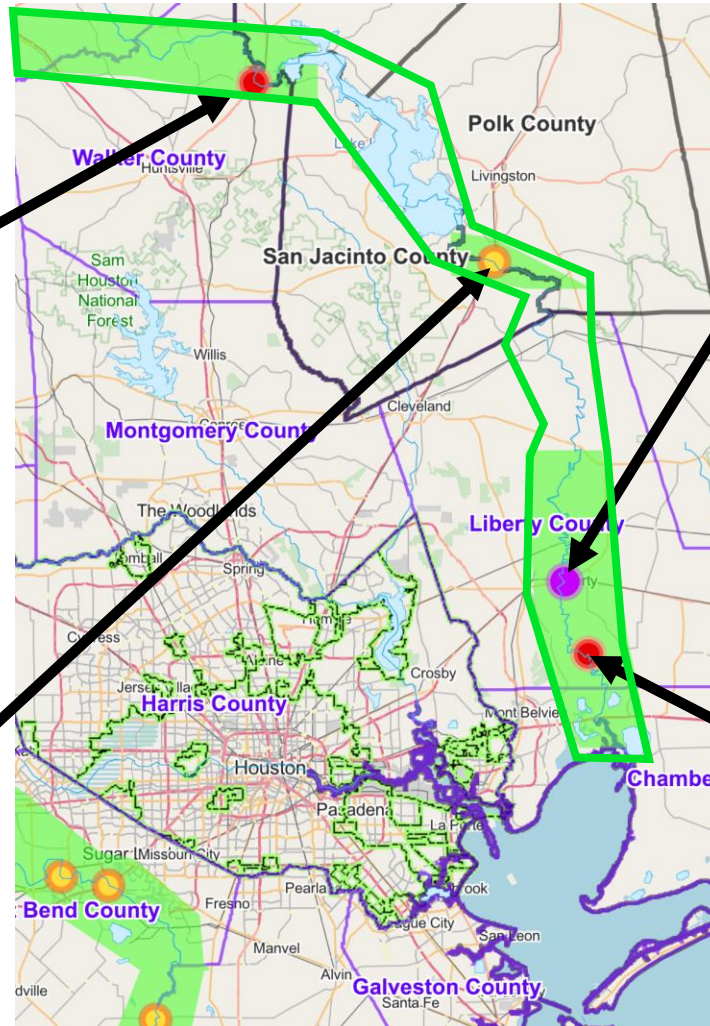
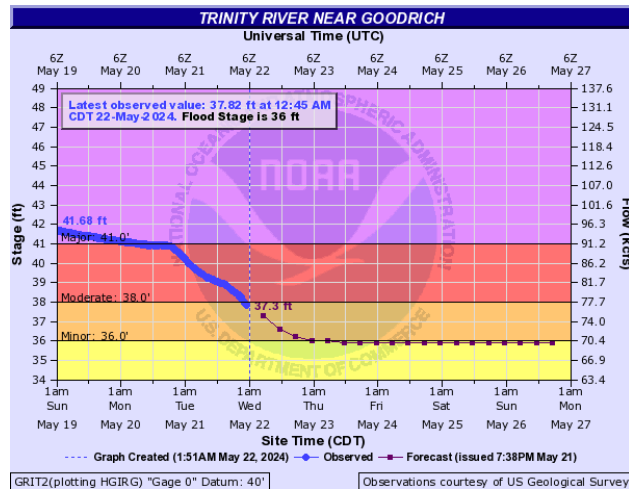
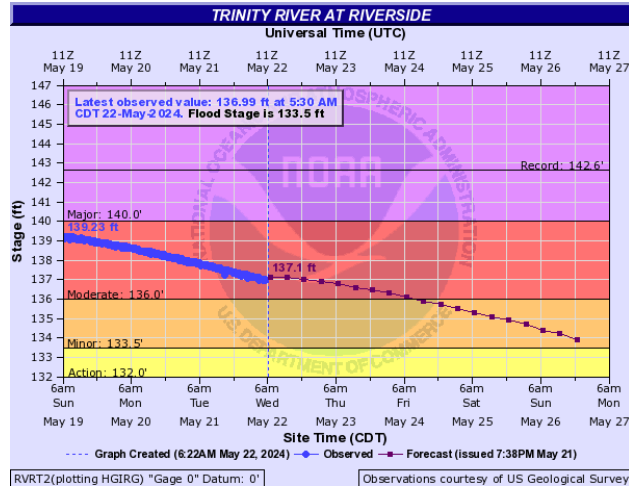
- Leave no Individual, Family, or Community Behind
- TGCRVOAD to identify underserved communities

Transition to the LTRC

Weather & Flooding Brief

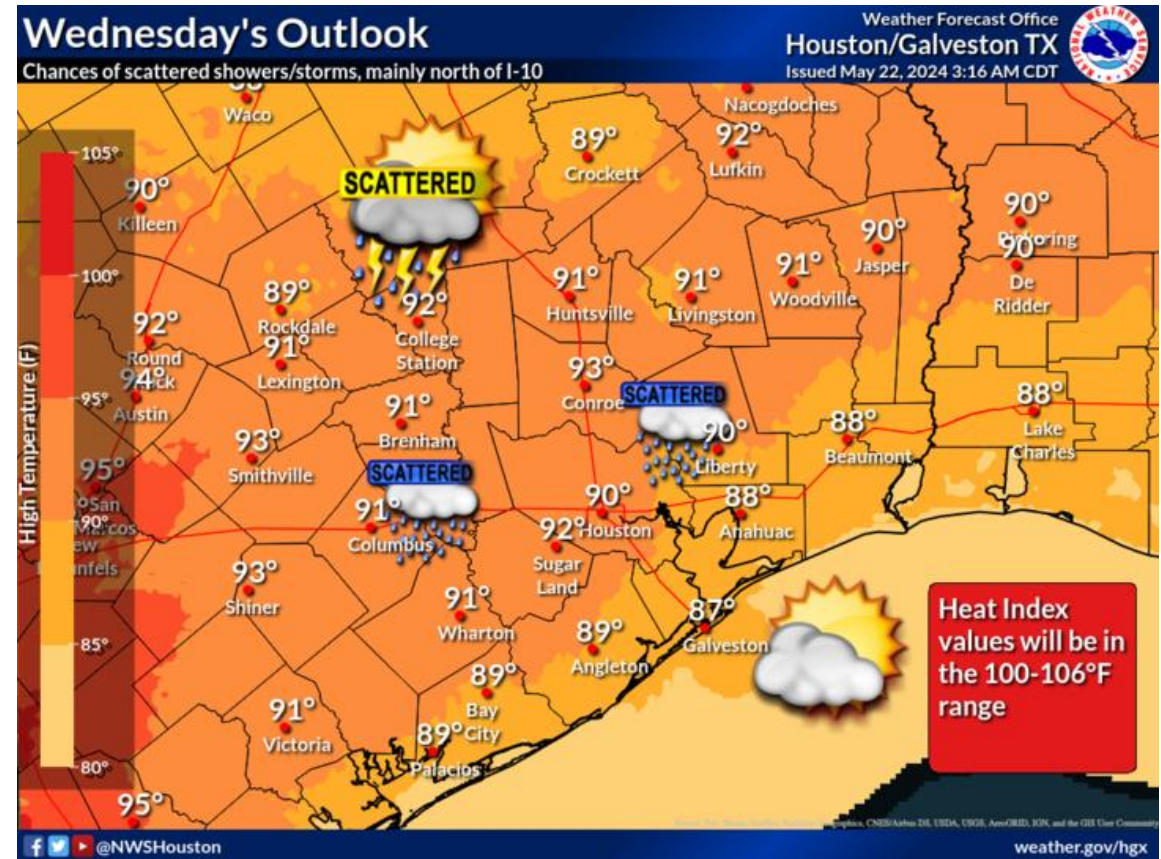


Trinity River Flooding






Weather for Responders

Today	89°/77°	AM Clouds/PM Sun	21%	SSE 18 mph
Thu 23	91°/78°	Partly Cloudy	16%	SSE 19 mph
Fri 24	94°/78°	Partly Cloudy	11%	SSE 18 mph
Sat 25	95°/78°	Mostly Sunny	8%	SSE 19 mph
Sun 26	95°/79°	Partly Cloudy	7%	S 17 mph
Mon 27	96°/75°	Partly Cloudy	12%	S 15 mph
Tue 28	93°/71°	Mostly Sunny	8%	ENE 15 mph
Wed 29	89°/73°	Partly Cloudy	22%	E 14 mph
Thu 30	89°/74°	Partly Cloudy	24%	ESE 16 mph
Fri 31	90°/75°	PM Thunderstorms	45%	SE 16 mph
Sat 01	90°/76°	Scattered Thunderstorms	44%	SE 16 mph



Temperatures on Wednesday will be in the upper 80s/low 90s with scattered showers/storms possible mainly north of I-10.

Houston's HOT!

Heat Exhaustion	Heat Stroke
<p>ACT FAST</p> <ul style="list-style-type: none">• Move to a cooler area• Loosen clothing• Sip cool water• Seek medical help if symptoms don't improve	<p>ACT FAST</p> <p>CALL 911</p> <ul style="list-style-type: none">• Move person to a cooler area• Loosen clothing and remove extra layers• Cool with water or ice
<p><i>Dizziness</i></p> <p><i>Thirst</i></p> <p><i>Heavy Sweating</i></p> <p><i>Nausea</i></p> <p><i>Weakness</i></p>	<p><i>Confusion</i></p> <p><i>Dizziness</i></p> <p><i>Becomes Unconscious</i></p>
	
<p><i>Heat exhaustion can lead to heat stroke.</i></p>	<p><i>Heat stroke can cause death or permanent disability if emergency treatment is not given.</i></p>
<p> Stay Cool, Stay Hydrated, Stay Informed! </p>	

Communication

Flyers



IMPACTED BY A DISASTER?
NEED HELP? For IMMEDIATE ASSISTANCE and access to help and resources
DIAL 2-1-1

RECOVERY RESOURCES AND INFORMATION

CRISIS CLEANUP FOR HARRIS COUNTY RESIDENTS
832-509-2977

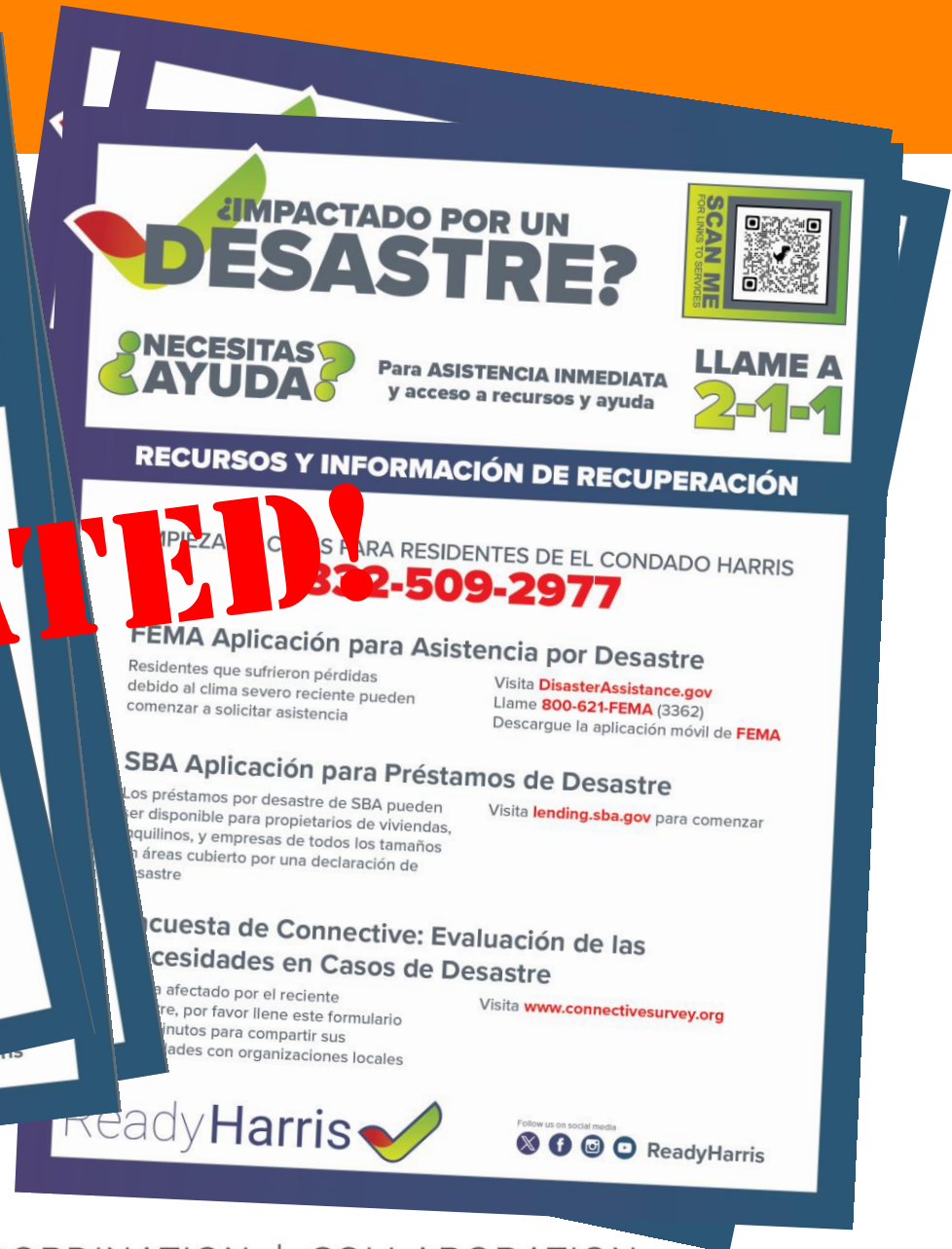
FEMA Disaster Assistance Application
Residents who sustained losses due to recent severe weather can begin applying for assistance
Visit www.DisasterAssistance.gov
Call 800-621-FEMA (3362)
Download the FEMA App

SBA Disaster Loan Application
SBA disaster loans may be available to homeowners, renters, and businesses of all sizes in areas covered by a disaster declaration
Visit lending.sba.gov to get started

Connective Disaster Needs Assessment Survey
If you were impacted by the recent disaster, please fill out this 5 minute survey to share your needs with local non-profits
Visit www.connectivesurvey.org

ReadyHarris

Follow us on social media
Twitter Facebook Instagram YouTube ReadyHarris



¿IMPACTADO POR UN DESASTRE?
¿NECESITAS AYUDA? Para ASISTENCIA INMEDIATA y acceso a recursos y ayuda
LLAME A 2-1-1

RECURSOS Y INFORMACIÓN DE RECUPERACIÓN

PIEZA DE CRISIS PARA RESIDENTES DE EL CONDADO HARRIS
832-509-2977

FEMA Aplicación para Asistencia por Desastre
Residentes que sufrieron pérdidas debido al clima severo reciente pueden comenzar a solicitar asistencia
Visita DisasterAssistance.gov
Llame **800-621-FEMA (3362)**
Descargue la aplicación móvil de **FEMA**

SBA Aplicación para Préstamos de Desastre
Los préstamos por desastre de SBA pueden ser disponible para propietarios de viviendas, inquilinos, y empresas de todos los tamaños en áreas cubierto por una declaración de desastre
Visita lending.sba.gov para comenzar

Pregunta de Connective: Evaluación de las Necesidades en Casos de Desastre
Si usted fue afectado por el reciente desastre, por favor llene este formulario de 5 minutos para compartir sus necesidades con organizaciones locales
Visita www.connectivesurvey.org

ReadyHarris

Follow us on social media
Twitter Facebook Instagram YouTube ReadyHarris



TGCRVOAD.org/contact-us



SUBSCRIBE

JOIN OUR MAILING LIST


MEMBERS, PARTNERS and GUESTS



UNSUBSCRIBE

LEAVE OUR MAILING LIST

SUBSCRIBERS ONLY



JOIN US!

APPLY TO BECOME A MEMBER or PARTNER



JOIN A COMMITTEE

MEMBERS ONLY



RFA

REQUEST ASSISTANCE

MEMBERS, PARTNERS, and JURISDICTIONS



SITREP

SUBMIT A SITUATION REPORT

MEMBERS ONLY



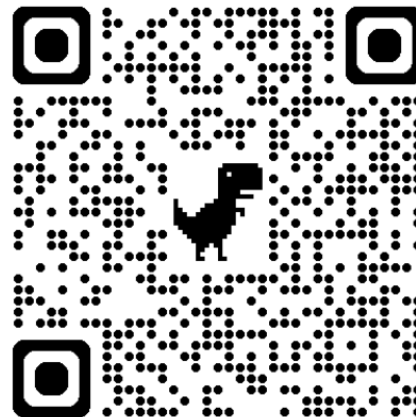
REQUEST TO MAKE A PRESENTATION



TGCRVOAD
PO Box 1491
BELLAIRE TX
77401



ORGANIZATION CHECK-IN



COOPERATION | COMMUNICATION | COORDINATION | COLLABORATION



Situation Report

- Initial**
- Update**
- Final**
- Resource Request**
- Report**
- Report Donation**
- Report Volunteer Hours**
- Technical Help with Website**
- Share this information on the Resource Page**

Area of Operation
Capability
Resources
Unmet Needs

Report Volunteer Hours

Required Documentation

Copy of the sign-in sheet

- *volunteer's name*
- *volunteer's title*
- *volunteer's function (required for professional services)*
- *date and hours worked*

Location of work

Work performed

TGCRVOAD SitRep, County OEM

Activation Level 1 - ACTIVATED!

Q | Member Logi

Texas Gulf Coast Regional
Voluntary Organizations
Active in Disaster

0 of 500 max characters

Report Volunteer Hours

Report volunteer hours. Required documentation includes a copy of the sign-in sheet, volunteer's name, title and function (required for professional services), date and hours worked. Location of work and work performed

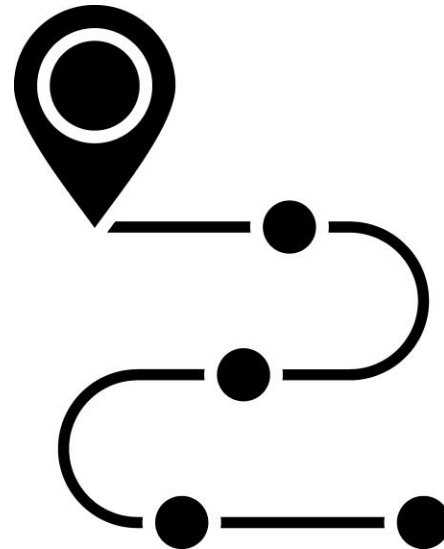
0 of 500 max characters

Attach Documents or Photos

Choose File no file selected

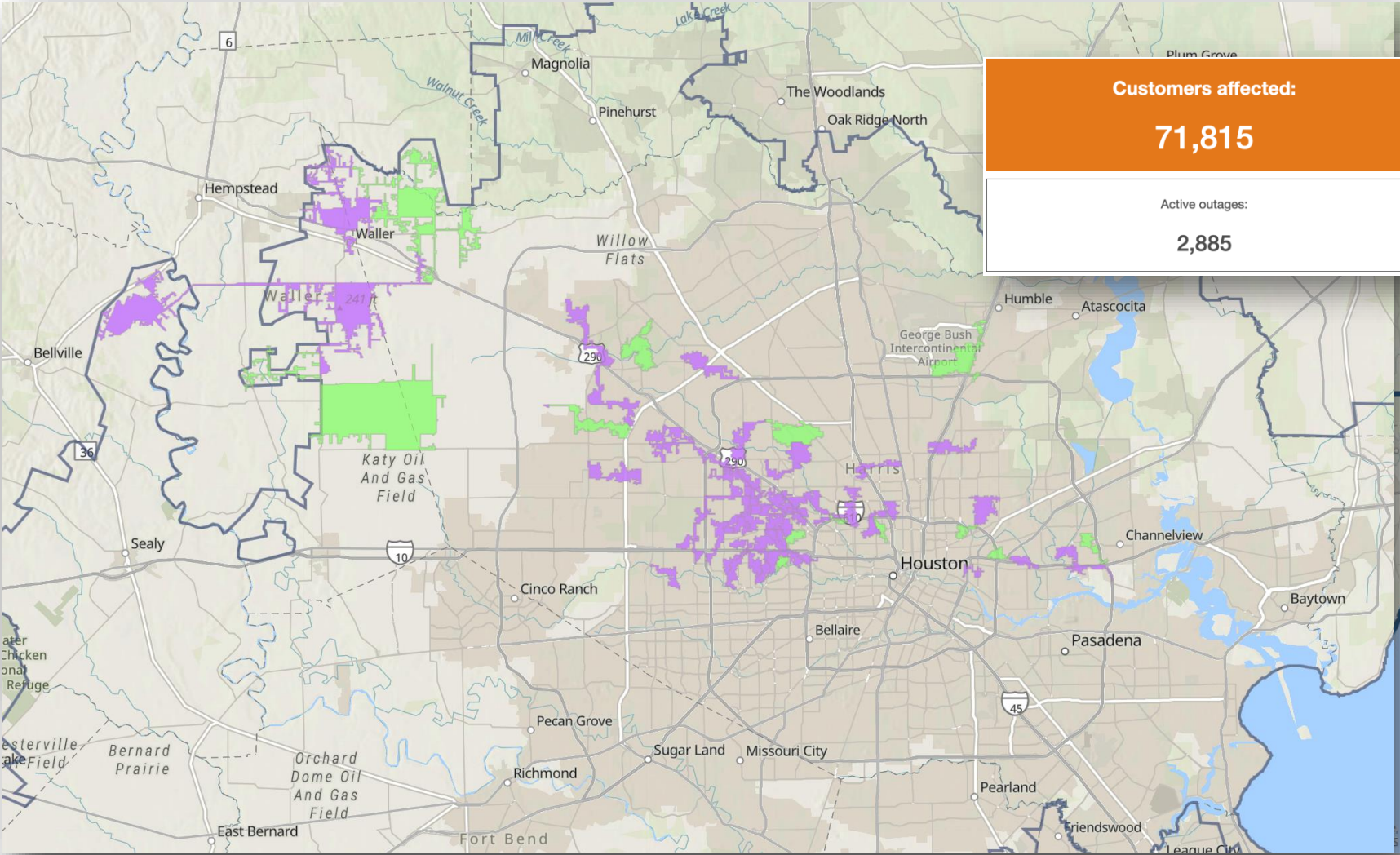
Max. file size: 100 MB.

Damage Assessment



COOPERATION | COMMUNICATION | COORDINATION | COLLABORATION

Power Restoration



Customers affected:
71,815

Customers restored in the last 24 hours:
213,015

Active outages:
2,885

Outages restored in the last 24 hours:
3,040



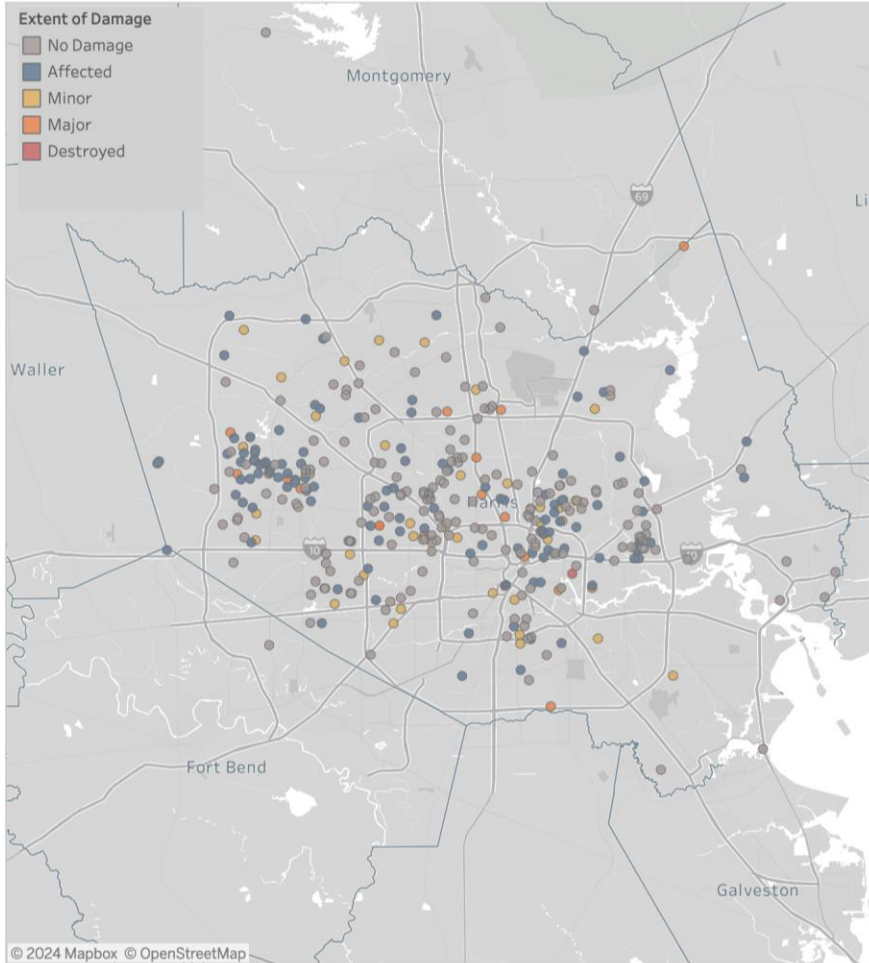
Connective Survey

First Surveys Completed: 435

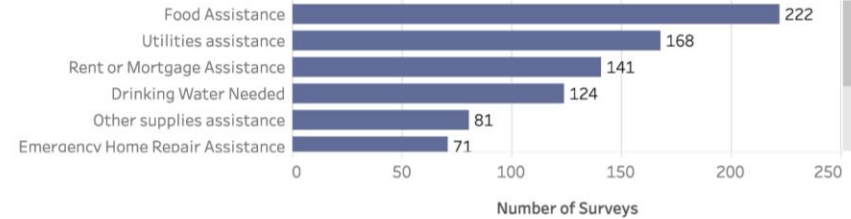
Homes with Wind Damage: 191

Homes with Flood Damage: 43

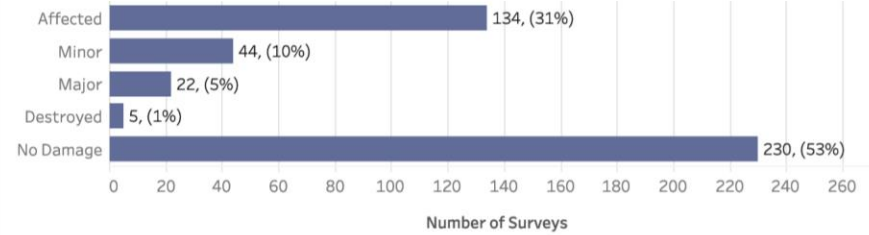
Homes with Power Loss: 394



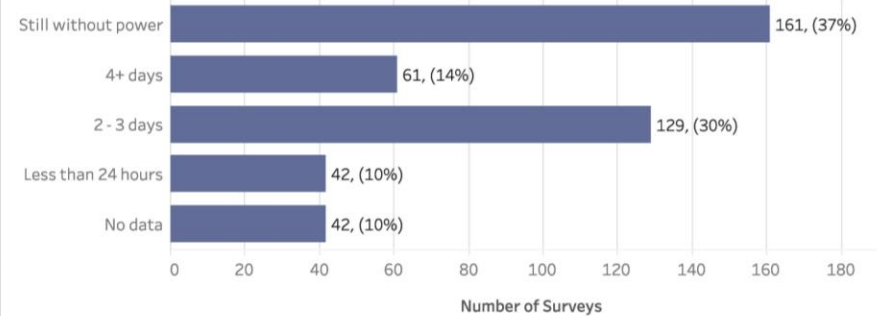
Primary Household Needs



Extent of Home Damage

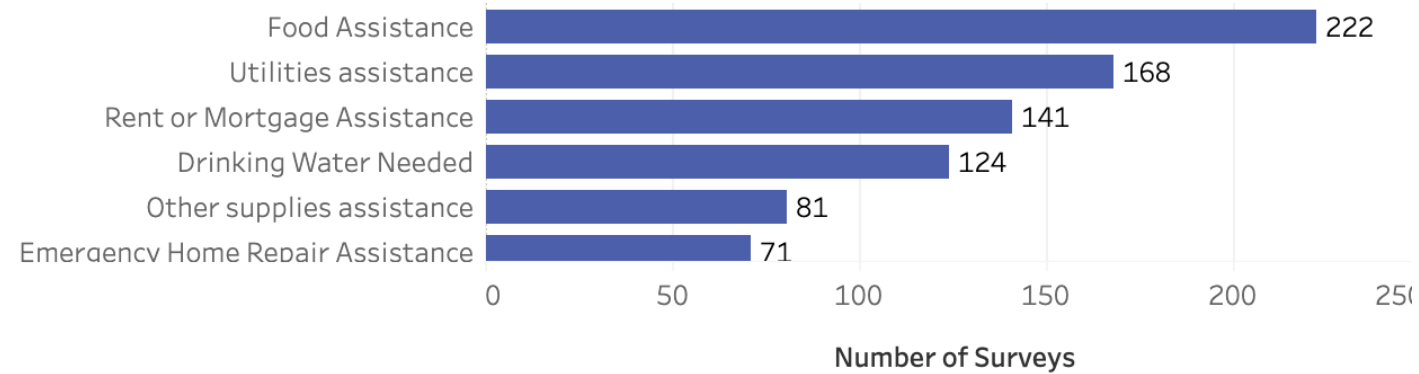


Duration of Power Loss

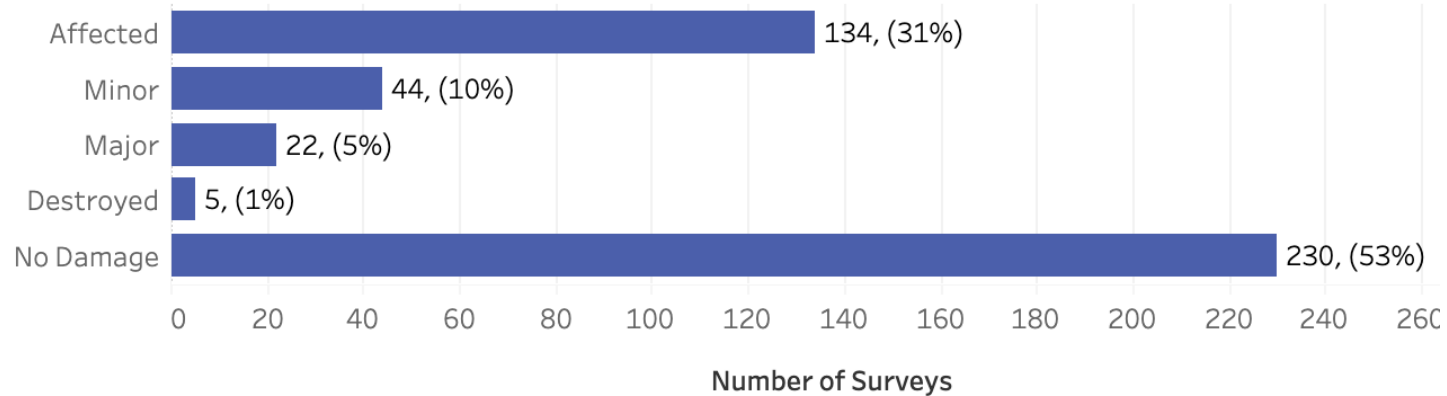


Connective Survey

Primary Household Needs



Extent of Home Damage



RFA Houston Foodbank

Non-Perishable Food Items:

Nutritional snacks - granola bars, nuts, trail mix, dried fruits pull-top canned goods (veggies, fruits, soups, meats - tuna, chicken), MREs, cereal

Easy-to-eat fruits (“hand fruits”):

bananas, apples, oranges, pears, peaches, etc.

Beverages:

Water and shelf-stable drinks

Hygiene Products:

Soap, toothpaste, household and personal hygiene products

Baby Supplies:

Diapers and wipes

Bleach and Cleaning Supplies:

for storm cleanup and sanitation

RFA: Houston Foodbank

535 Portwall St

Houston, TX 77029

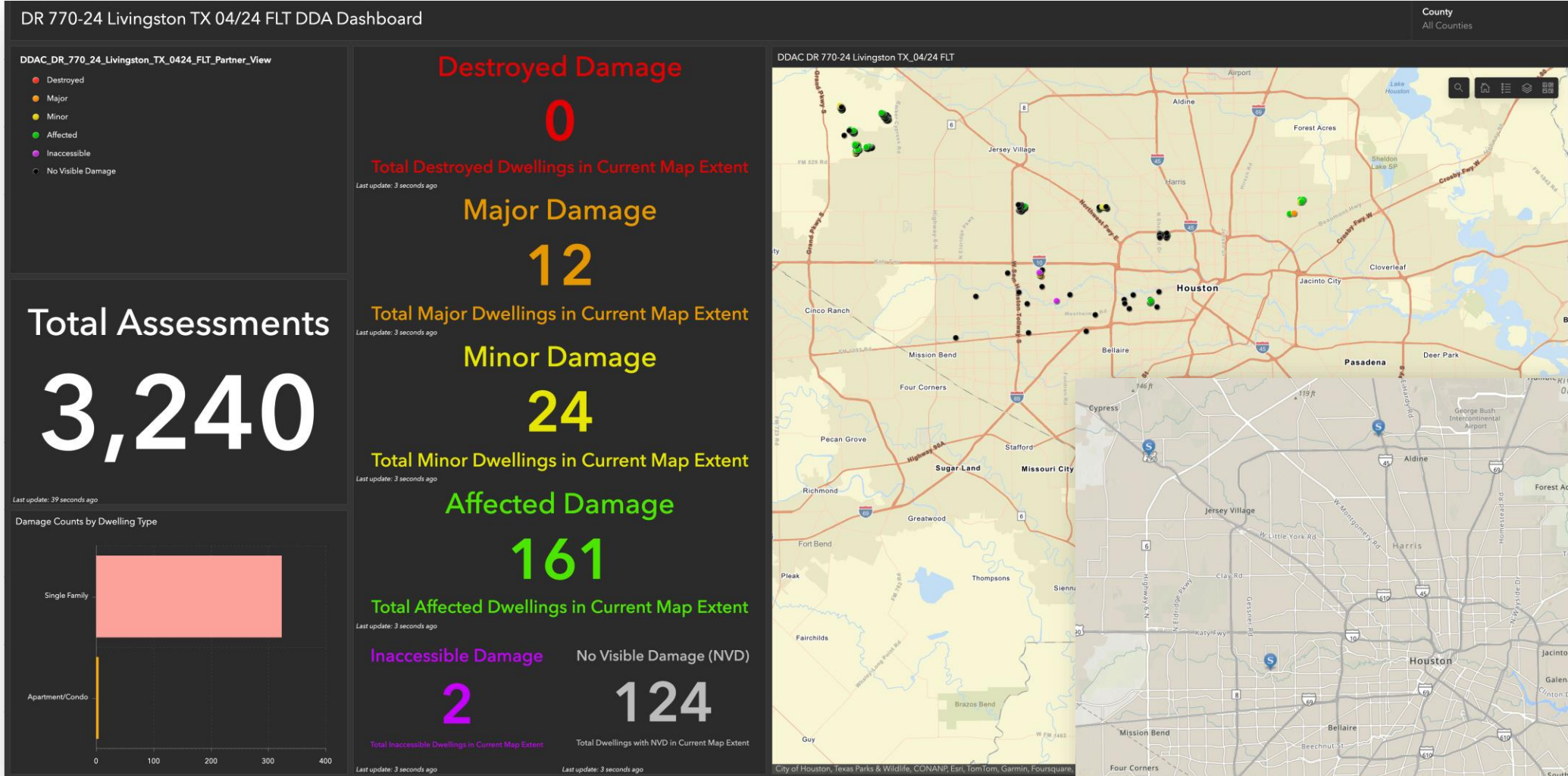
Donor Services: 713.547.8623

Main: 713.223.3700

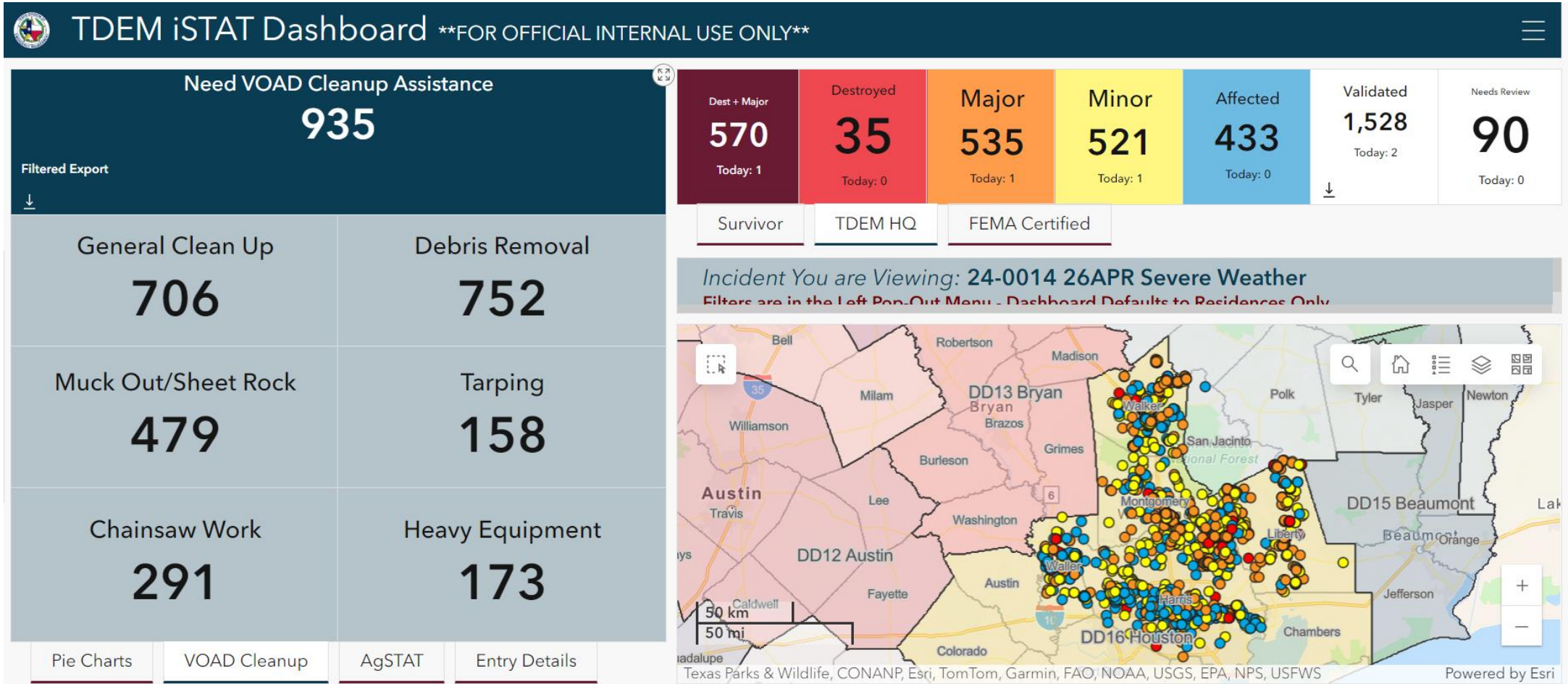
Any consolidation of deliveries would be appreciated.

The Houston Foodbank is also requesting volunteers. Please see <https://www.houstonfoodbank.org/ways-to-give/give-time/volunteerwithhfb/>

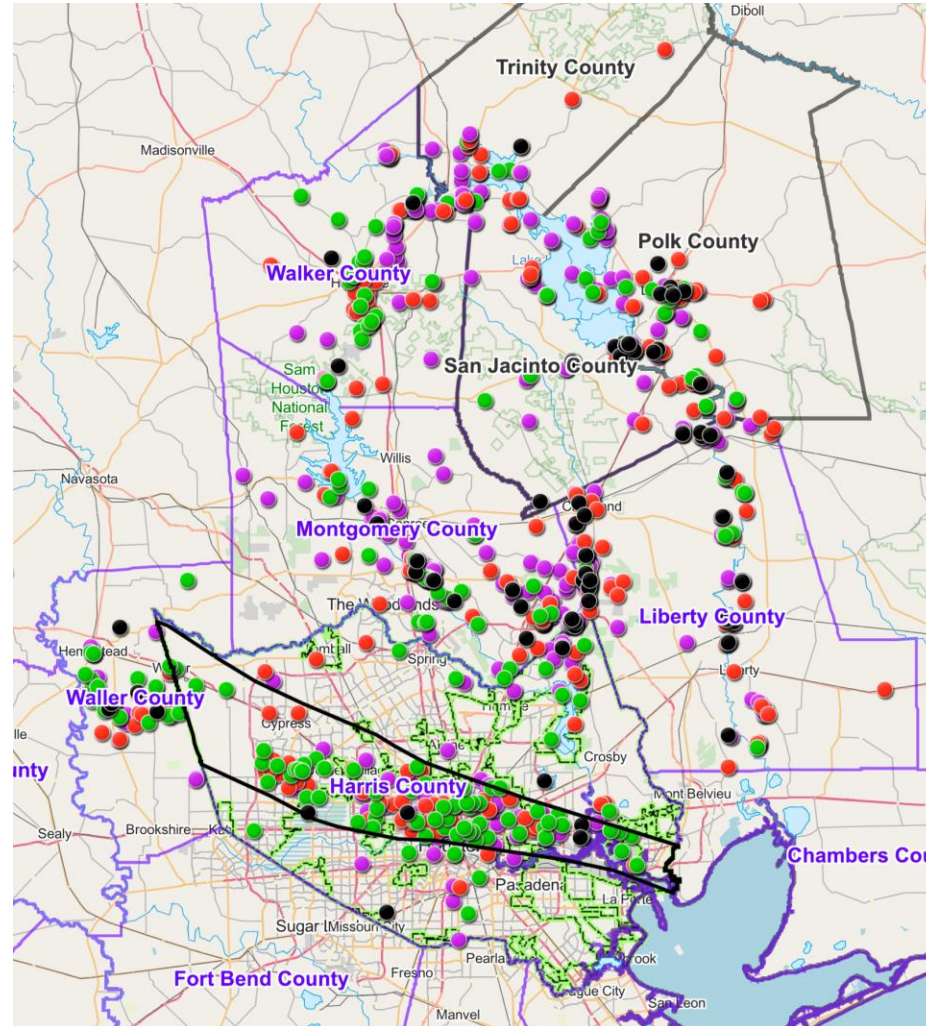
Red Cross Damage Assessments



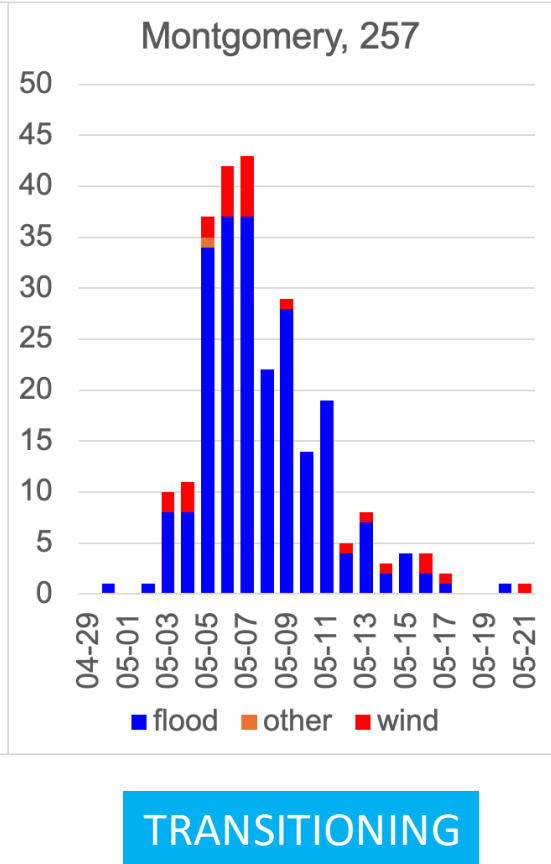
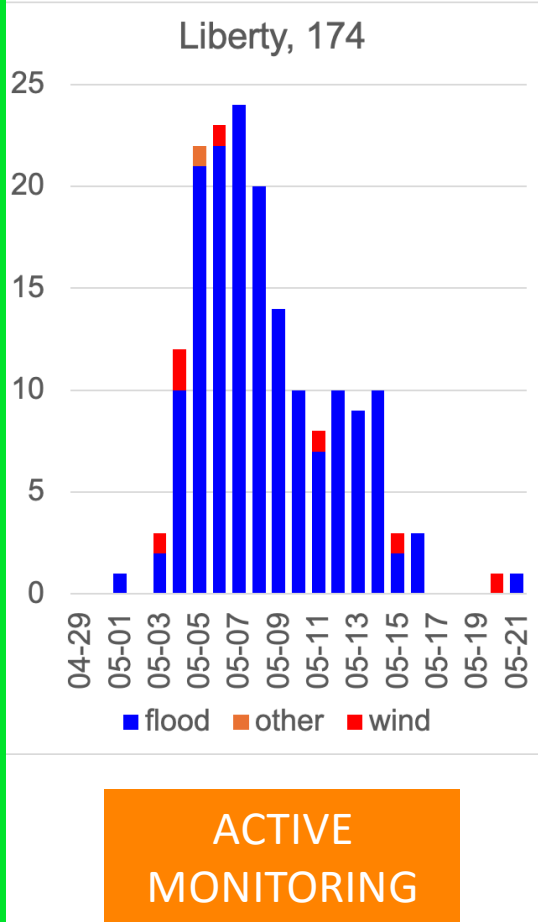
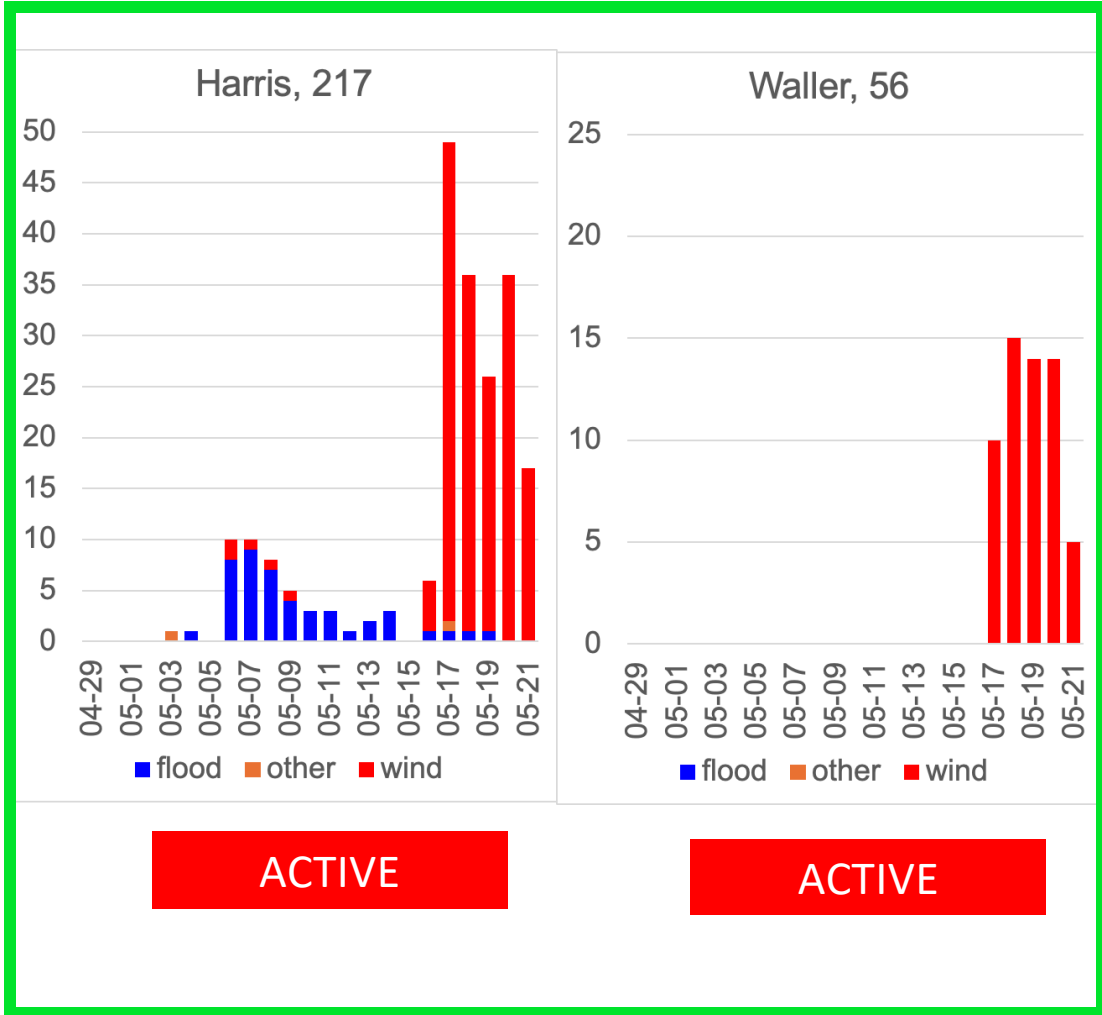
iSTAT Dashboard Region 4



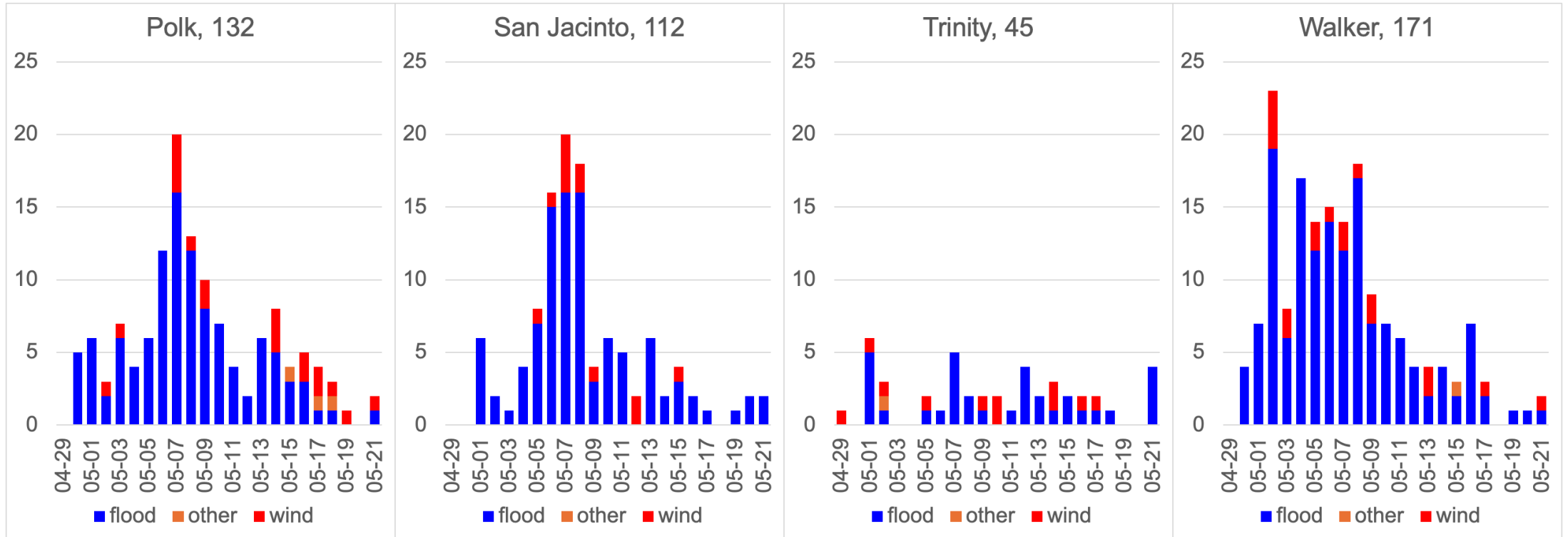
Actionable ISTAT Reports



Actionable iSTAT Reports



Actionable iSTAT Reports



ACTIVE MONITORING

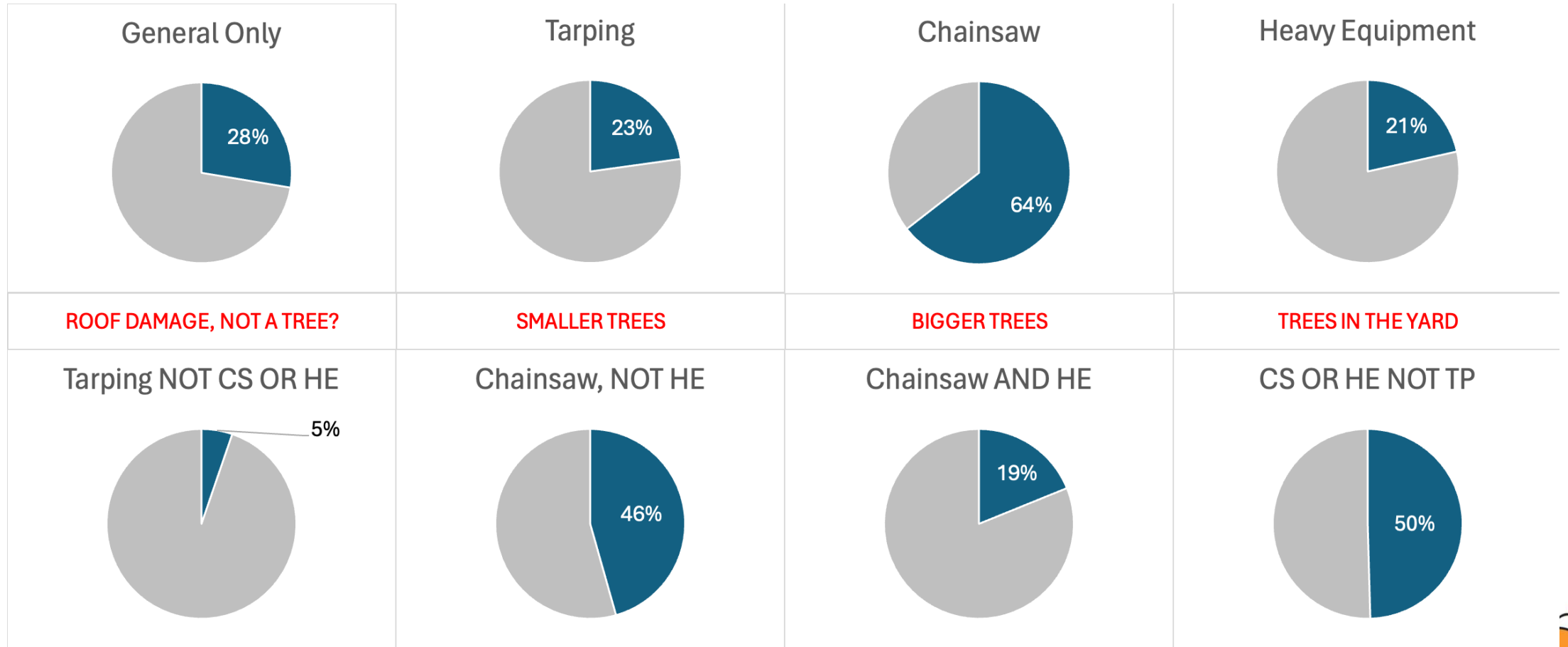
ACTIVE MONITORING

ACTIVE MONITORING

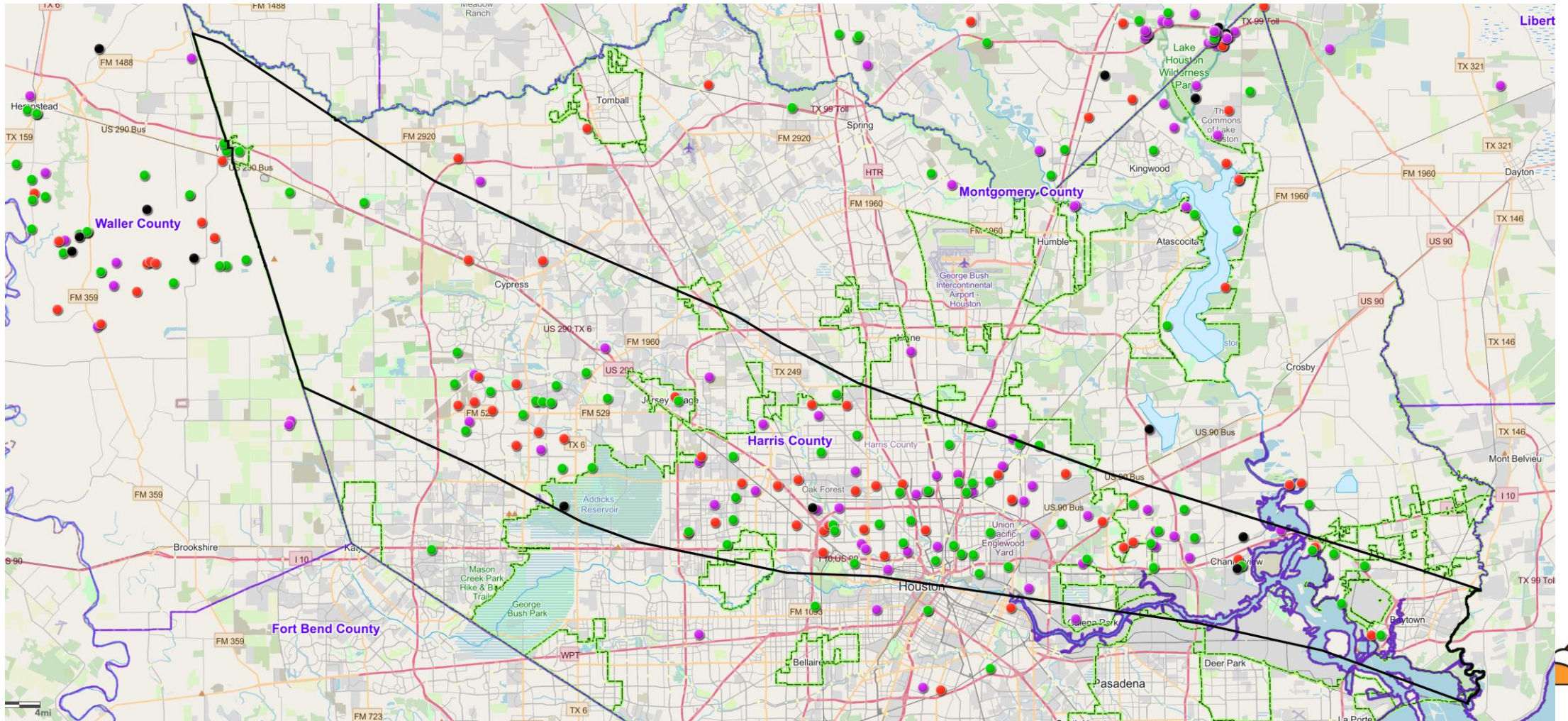
TRANSITIONING



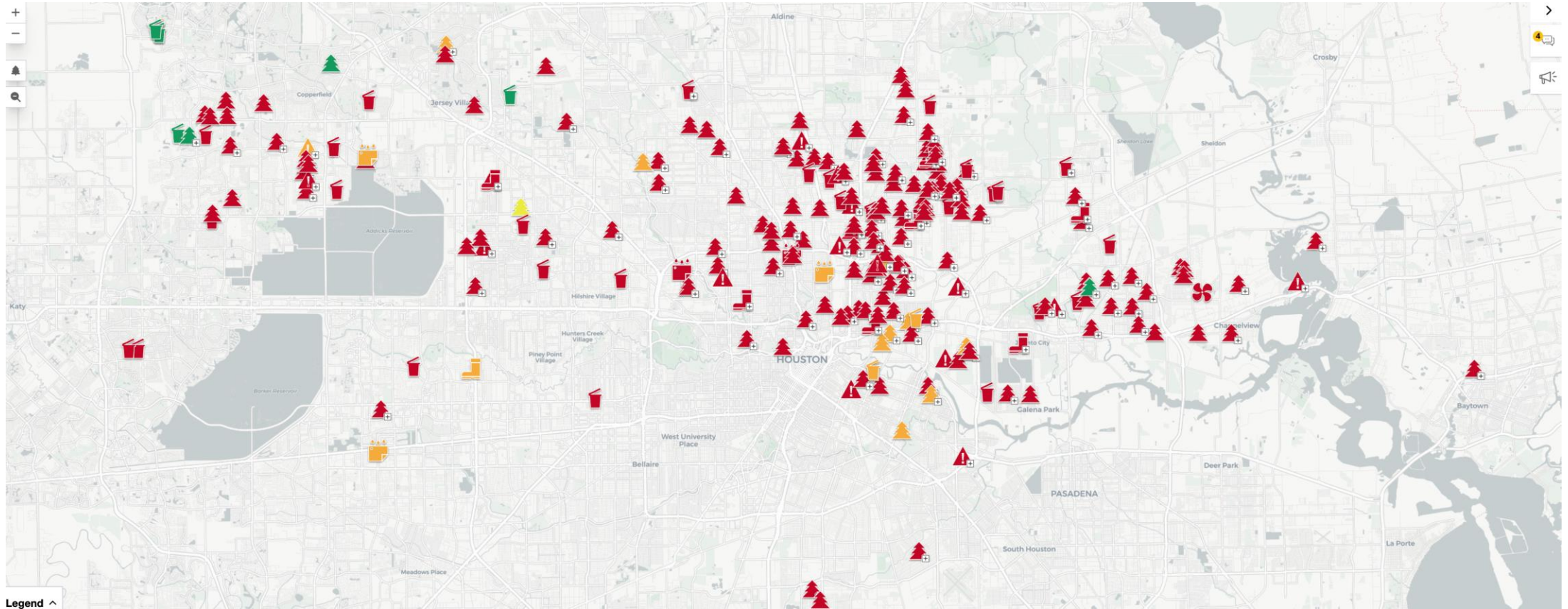
iSTAT Work Requested



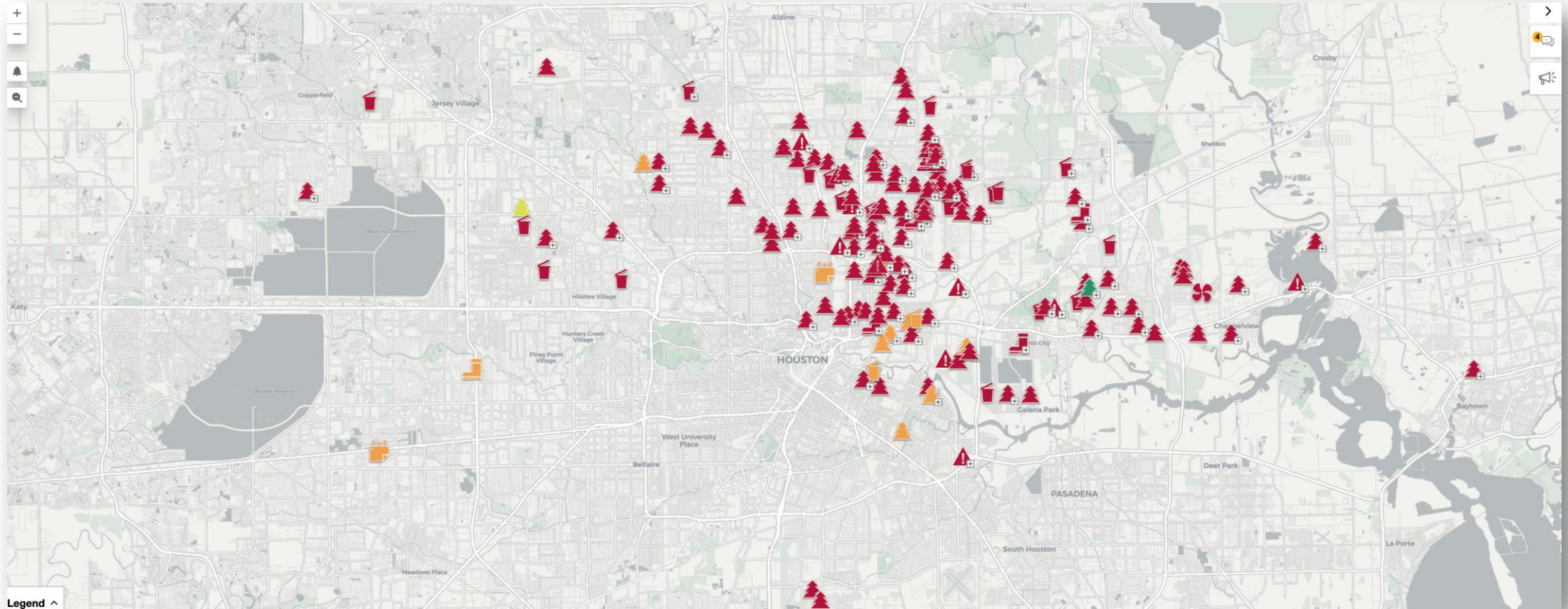
Waller and Harris Counties



Crisis Cleanup 611 (252 Harris)



Crisis Cleanup (High SVI)



COOPERATION | COMMUNICATION | COORDINATION | COLLABORATION

RFA: Crisis Cleanup

Spanish-speaking volunteer operator for Crisis Cleanup. This is a **CRITICAL NEED.**

We have a backlog of calls that must be processed.

Operador voluntario de habla hispana para Crisis Cleanup.

Esta es una **NECESIDAD CRÍTICA.**

Tenemos una acumulación de llamadas que deben ser procesadas.

RFA: Tarps

We have a supply of 20x25 roofing tarps that will become available **sometime today.**

You must submit a Sit Rep requesting tarps. Please include the number of tarps and crews working over the next week.

Submit your SitReps now.

Reports from Jurisdictions

Please State your Name and Jurisdiction

Reports from Members and Guests

Please State your Name and Organization



Texas Gulf Coast Regional Voluntary Organizations Active in Disaster

COOPERATION | COMMUNICATION | COORDINATION | COLLABORATION

See You Thursday Morning!

*Be safe!
Check-ins
SitReps*

*Cooperation
Communication
Coordination
Collaboration*



COOPERATION | COMMUNICATION | COORDINATION | COLLABORATION



**IT'S A MARATHON,
NOT A SPRINT**

