



Texas Gulf Coast Regional Voluntary Organizations Active in Disaster

COOPERATION | COMMUNICATION | COORDINATION | COLLABORATION

May 16th Severe Storms Recovery Coordination Call

*please add your name, organization,
mobile phone, email, and the status
of your organization (Active/Standby)
and the resource/service you offer to the chat*

COOPERATION | COMMUNICATION | COORDINATION | COLLABORATION



Agenda

Welcome

name, organization, mobile phone, email

Status (active, stand-by) and resource/service

Course of Action / Period Objectives

Weather

Building Situational Awareness

Reports from Jurisdictions

Reports from Members and Guests

Closing Comments and Review of Actions for the Next Period.

Course of Action Period Objectives

COOPERATION | COMMUNICATION | COORDINATION | COLLABORATION



Course of Action / Objectives

Build our Situational Awareness

- SitReps
- Encourage iStat, Crisis Cleanup, Connective
- Damage Assessment & Identify unmet needs
- Battle Rhythm

Tarp Roofs, Remove Trees

- Safety
- Use Crisis Cleanup, Identify jobs, Record work
- Report hours on SitRep

Support Human Services

- Cooling Centers, PODs

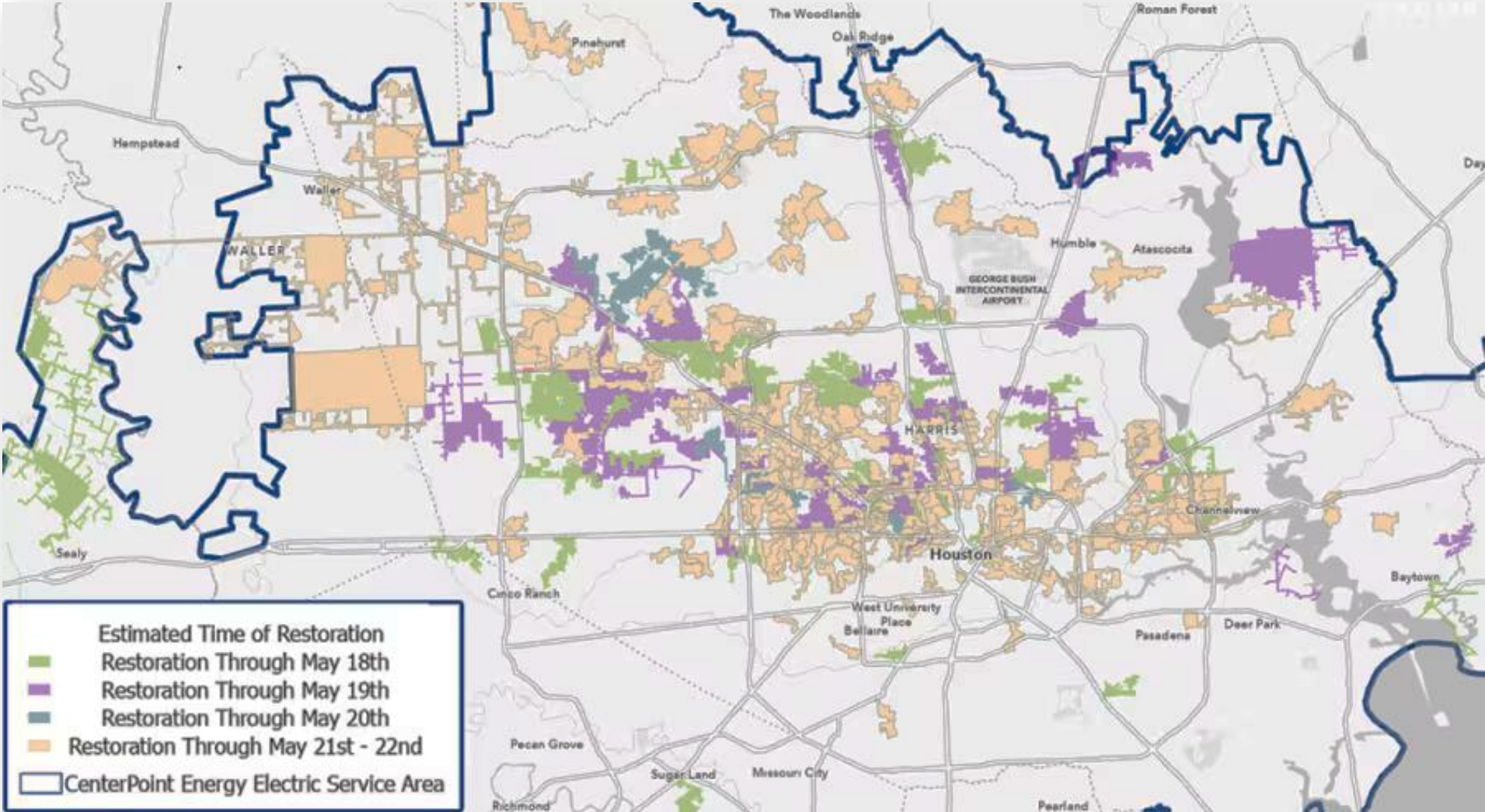
- Donations – Ice, Water, snacks - CoH
- Case Management

Manage Resources

- Leave no Individual, Family, or Community Behind
- TGCRVOAD to identify underserved communities

Transition to the LTRC

Power Restoration



COOPERATION | COMMUNICATION | COORDINATION | COLLABORATION



Ready Harris

COOPERATION | COMMUNICATION | COORDINATION | COLLABORATION



Communication

COOPERATION | COMMUNICATION | COORDINATION | COLLABORATION

TGCRVOAD.org/contact-us



SUBSCRIBE

JOIN OUR MAILING LIST


MEMBERS, PARTNERS and GUESTS



UNSUBSCRIBE


LEAVE OUR MAILING LIST

SUBSCRIBERS ONLY



JOIN US!

APPLY TO BECOME A MEMBER or PARTNER



JOIN A COMMITTEE

MEMBERS ONLY



RFA

REQUEST ASSISTANCE

MEMBERS, PARTNERS, and JURISDICTIONS



SITREP

SUBMIT A SITUATION REPORT

MEMBERS ONLY



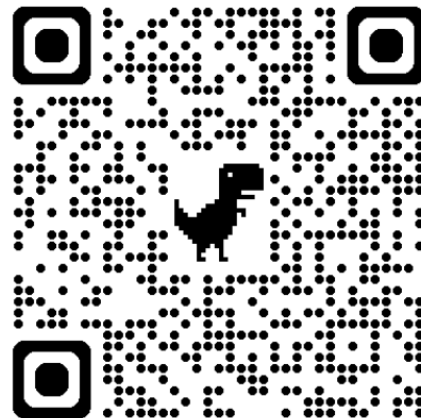
REQUEST TO MAKE A PRESENTATION



TGCRVOAD
PO Box 1491
BELLAIRE TX
77401



ORGANIZATION CHECK-IN



Situation Report

- Initial**
- Update**
- Final**
- Resource Request**
- Report**
- Report Donation**
- Report Volunteer Hours**
- Technical Help with Website**
- Share this information on the Resource Page**

Area of Operation
Capability
Resources
Unmet Needs

Report Volunteer Hours

Required Documentation

Copy of the sign-in sheet

- *volunteer's name*
- *volunteer's title*
- *volunteer's function (required for professional services)*
- *date and hours worked*

Location of work

Work performed

TGCRVOAD SitRep, County OEM












The screenshot shows a web interface for reporting volunteer hours. At the top, a red banner reads "Activation Level 1 - ACTIVATED!". Below this is a navigation bar with a search icon and "Member Logi". The main header features the TGCRVOAD logo and the text "Texas Gulf Coast Regional Voluntary Organizations Active in Disaster". The form is titled "Report Volunteer Hours" and includes the following instructions: "Report volunteer hours. Required documentation includes a copy of the sign-in sheet, volunteer's name, title and function (required for professional services), date and hours worked. Location of work and work performed". There are two text input fields, each with a "0 of 500 max characters" label. Below the second field is an "Attach Documents or Photos" section with a "Choose File" button and the text "no file selected". At the bottom of the form, it states "Max. file size: 100 MB."

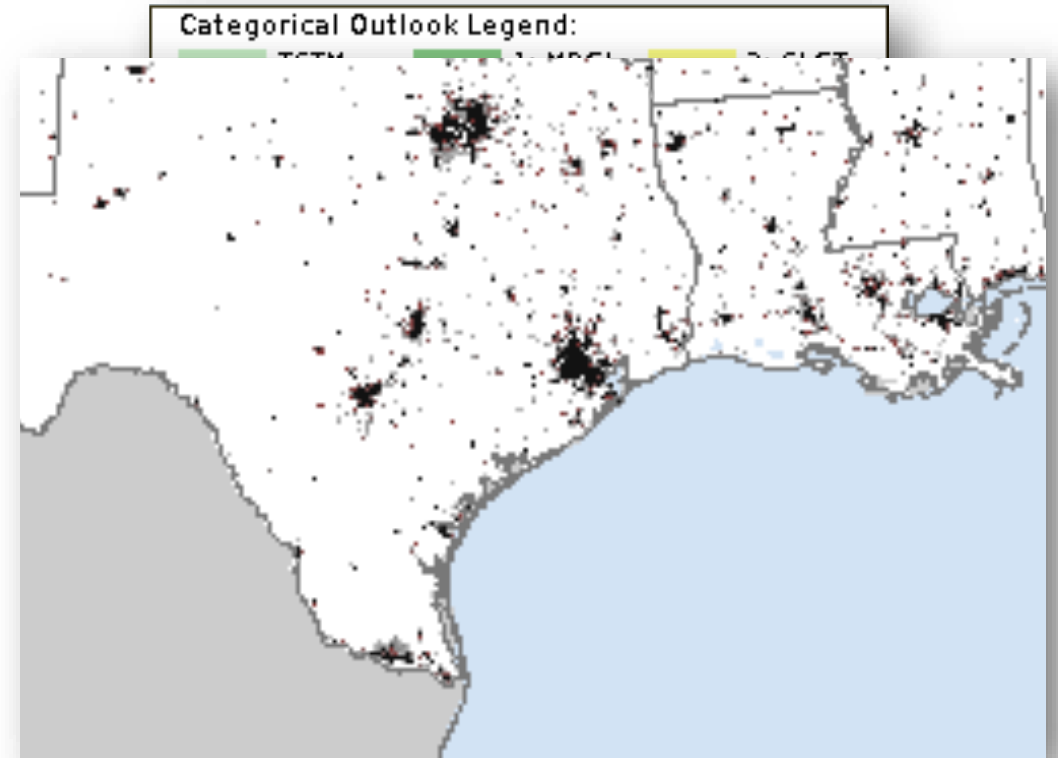
Weather

COOPERATION | COMMUNICATION | COORDINATION | COLLABORATION



Weather for Responders

Today	92°/71°		Sunny	3%	SE 15 mph
Mon 20	91°/76°		Mostly Sunny	12%	SSE 16 mph
Tue 21	89°/77°		Partly Cloudy	24%	SSE 19 mph
Wed 22	89°/77°		AM Clouds/PM Sun	24%	SSE 19 mph
Thu 23	88°/77°		Partly Cloudy	19%	SSE 18 mph
Fri 24	92°/78°		Partly Cloudy	8%	SSE 17 mph
Sat 25	93°/77°		Mostly Sunny	15%	SSE 18 mph
Sun 26	93°/78°		Mostly Sunny	7%	SSE 19 mph
Mon 27	92°/79°		Mostly Sunny	16%	SSE 18 mph
Tue 28	92°/78°		Mostly Sunny	17%	SSE 17 mph
Wed 29	91°/76°		AM Thunderstorms	35%	SSE 16 mph



Damage Assessment

COOPERATION | COMMUNICATION | COORDINATION | COLLABORATION



1

REPORT STORM DAMAGES

DAMAGE.TDEM.TEXAS.GOV

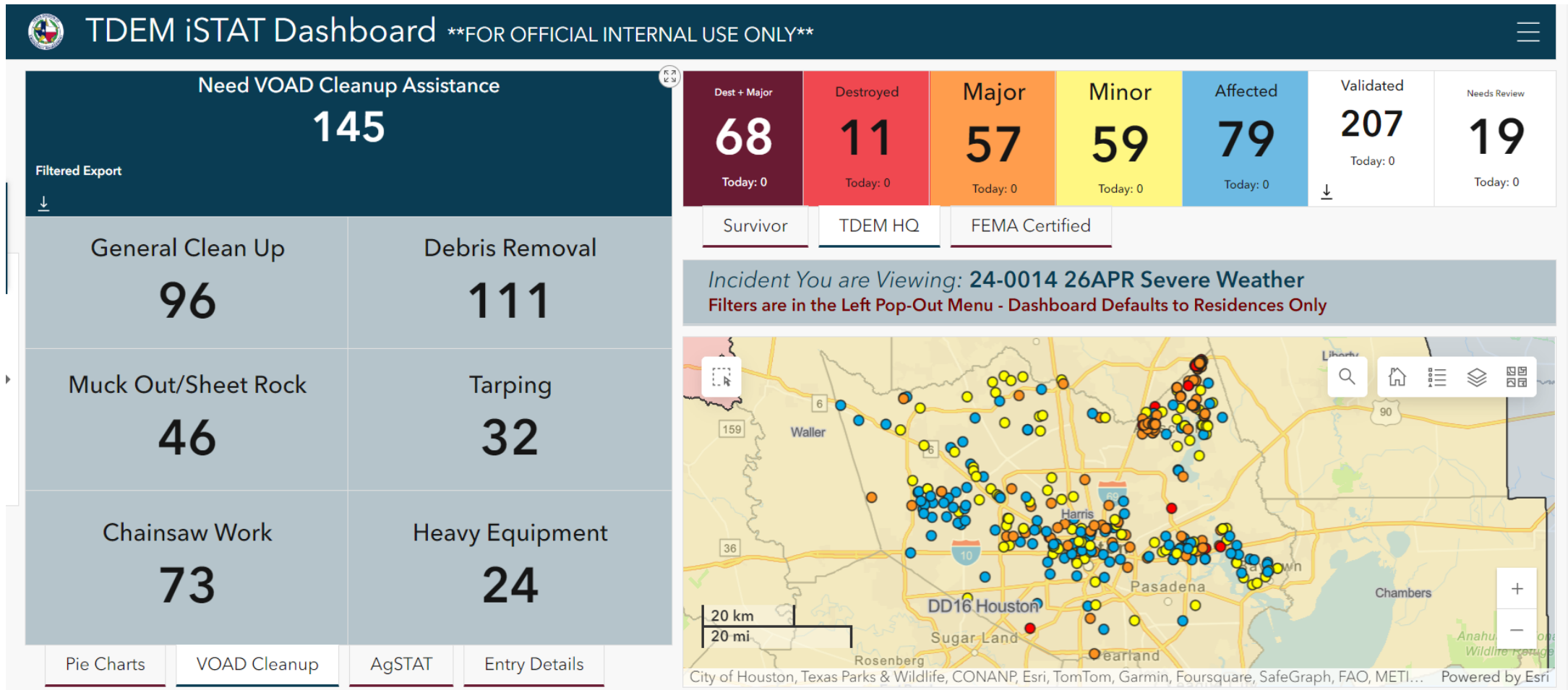


TDEM iSTAT

COOPERATION | COMMUNICATION | COORDINATION | COLLABORATION



1. iSTAT



COOPERATION | COMMUNICATION | COORDINATION | COLLABORATION

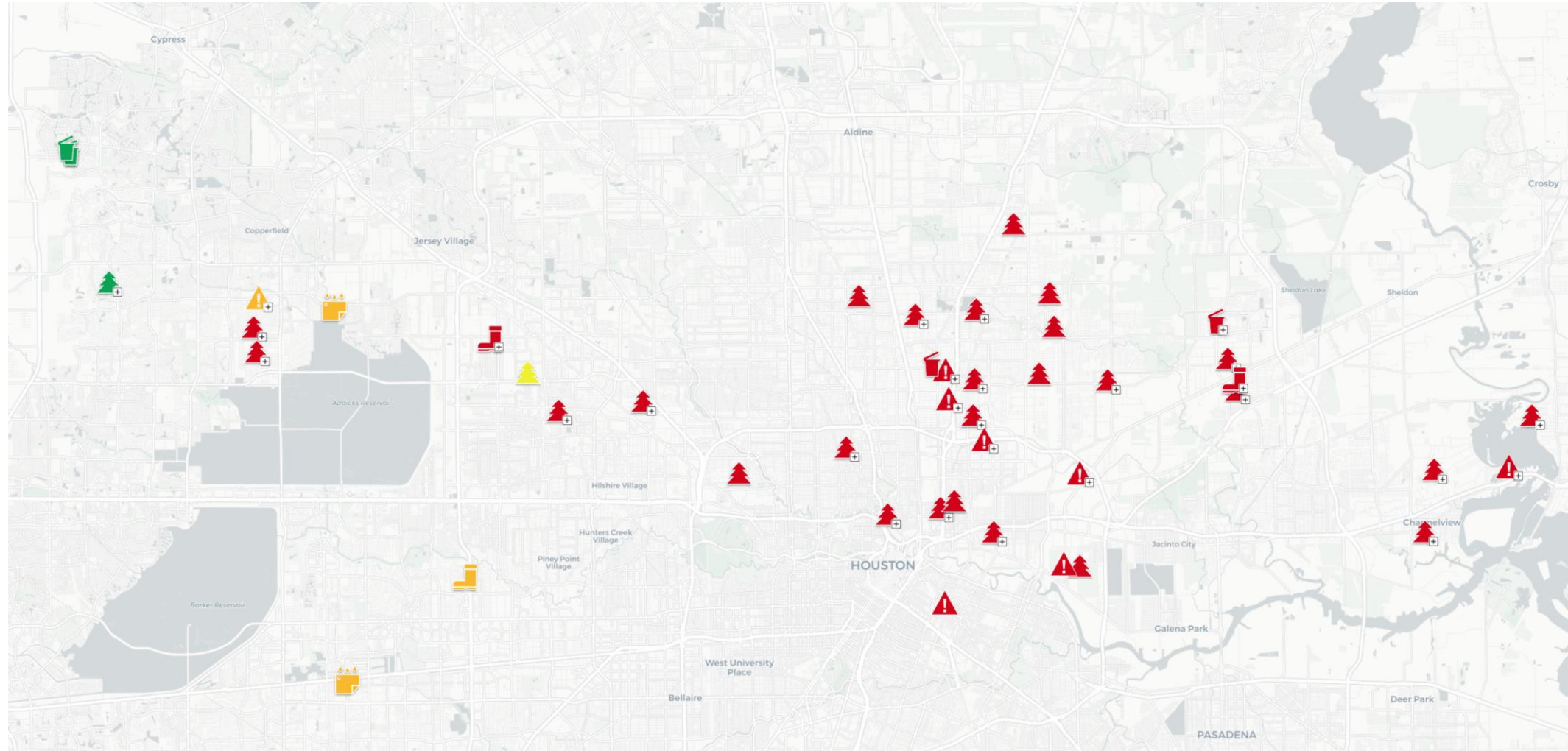


2



SE Texas Storms
(832) 509-2977

2. Crisis Cleanup 439 cases



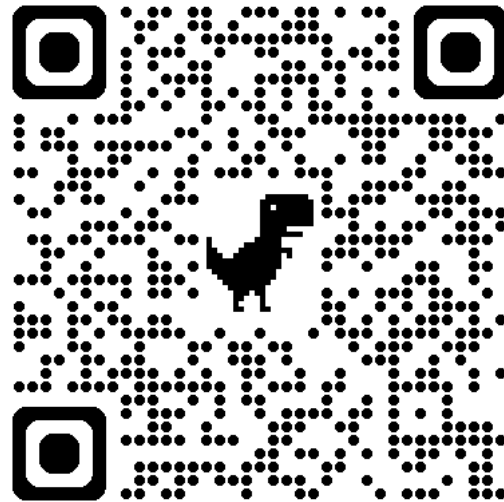
COOPERATION | COMMUNICATION | COORDINATION | COLLABORATION

3



connective

Disaster Needs Assessment



COOPERATION | COMMUNICATION | COORDINATION | COLLABORATION



3. Connective Dashboard



May 16th Severe Storm and Wind Event

Filter by County

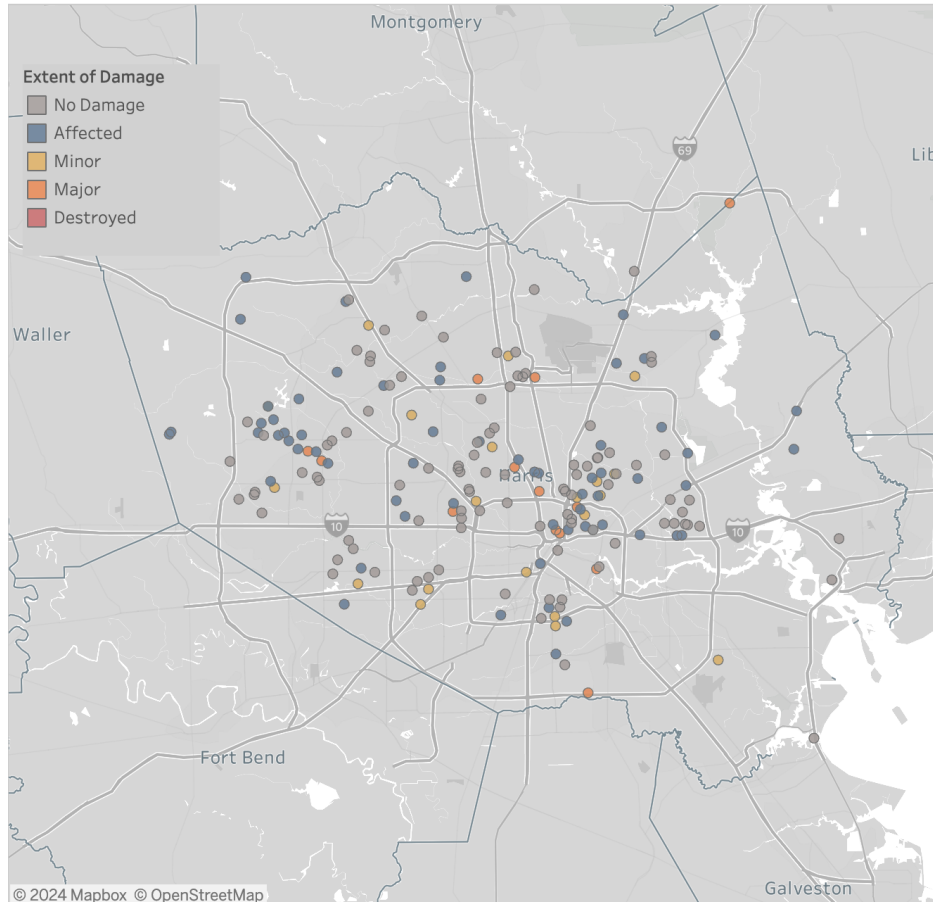
Harris

First Surveys Completed: 227

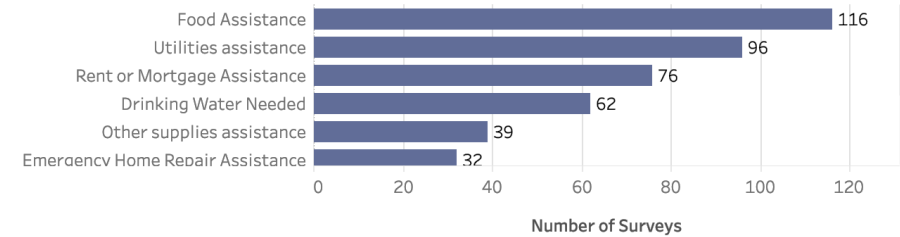
Homes with Wind Damage: 97

Homes with Flood Damage: 27

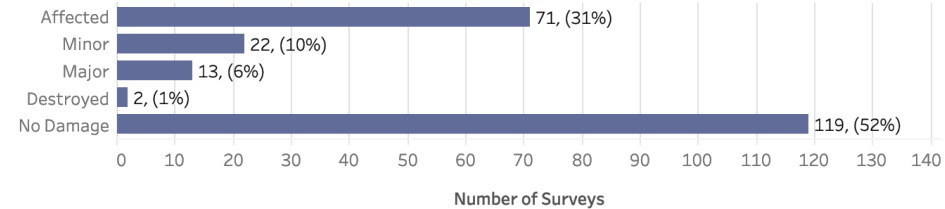
Homes with Power Loss: 198



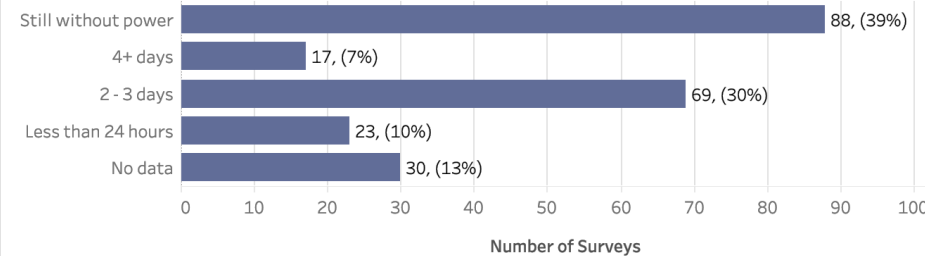
Primary Household Needs



Extent of Home Damage



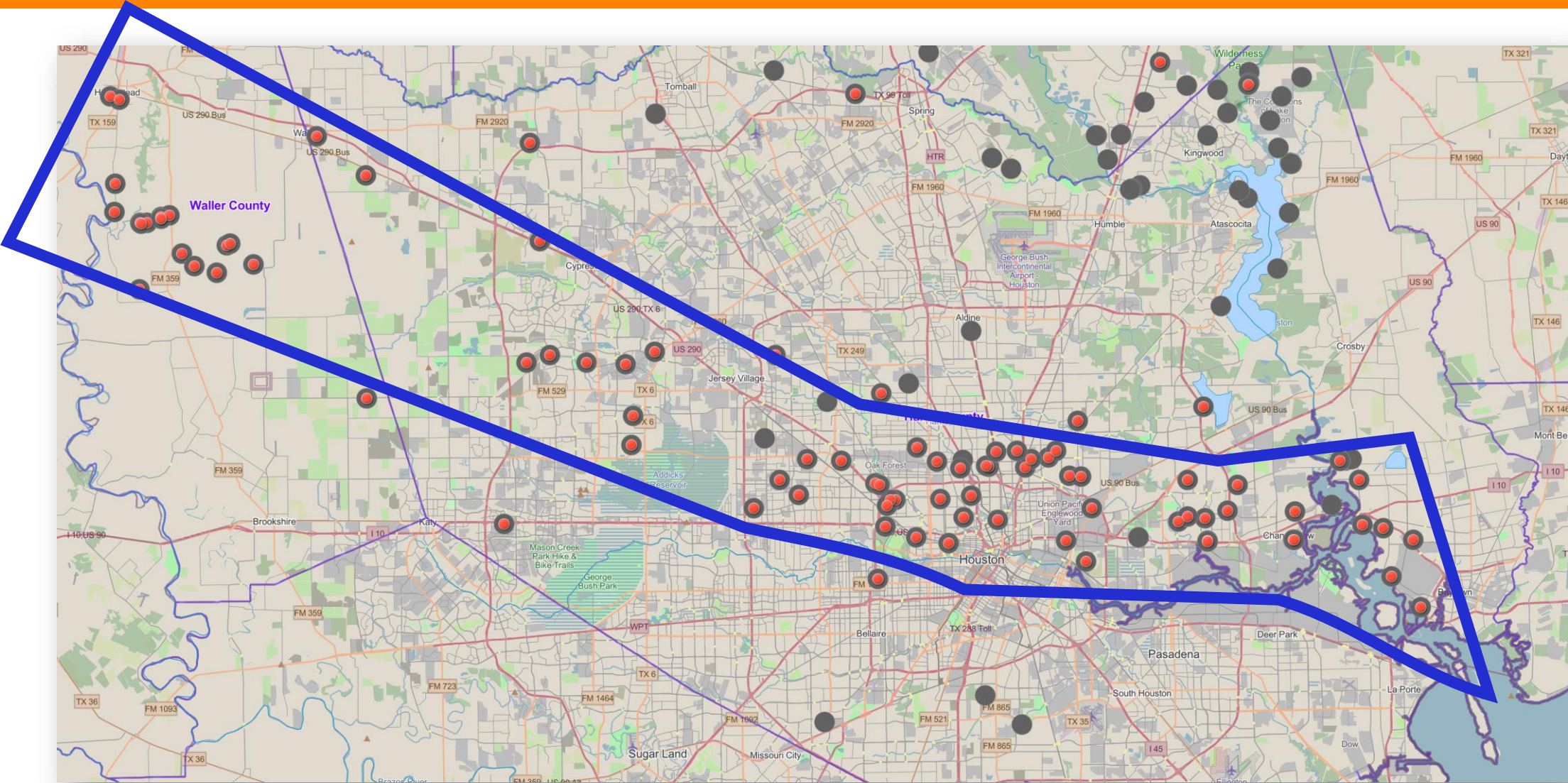
Duration of Power Loss



COOPERATION | COMMUNICATION | COORDINATION | COLLABORATION



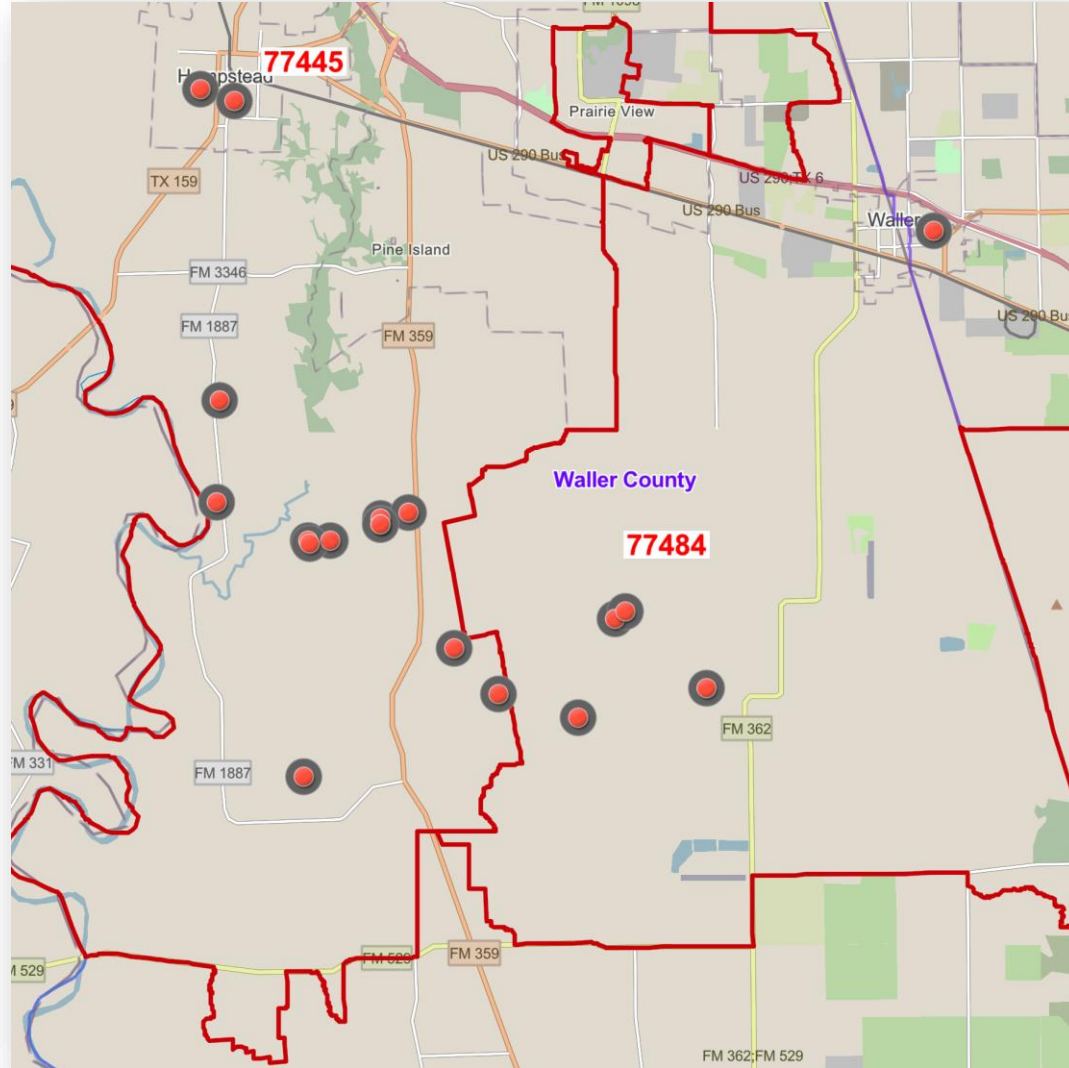
iSTAT Reports



COOPERATION | COMMUNICATION | COORDINATION | COLLABORATION



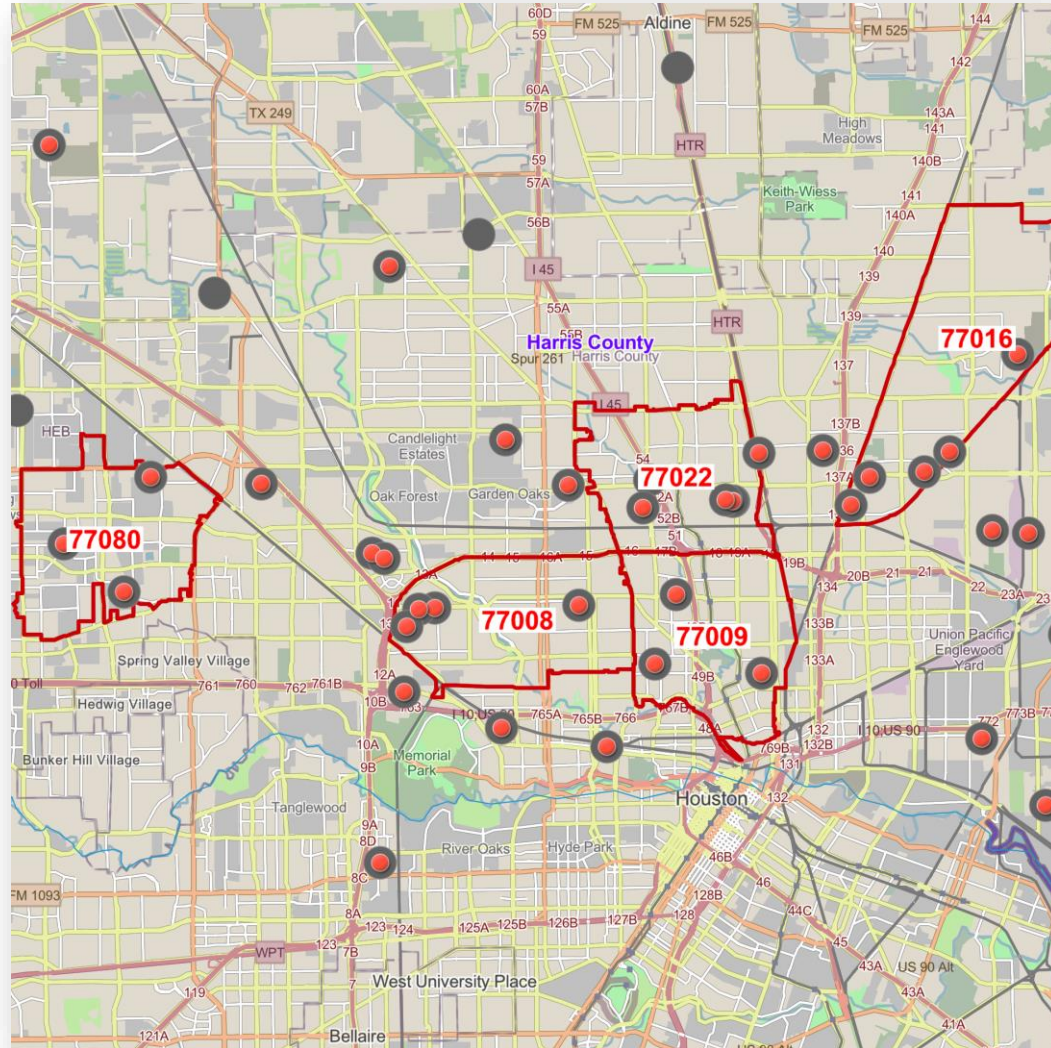
Waller, 28 Shareable Reports



77445	16
77484	12
77016	7
77015	6
77530	5
77008	4
77009	4
77022	4
77080	4
77433	4
77520	4

COOPERATION | COMMUNICATION | COORDINATION | COLLABORATION

Inside the Beltway, 23 Shareable Reports

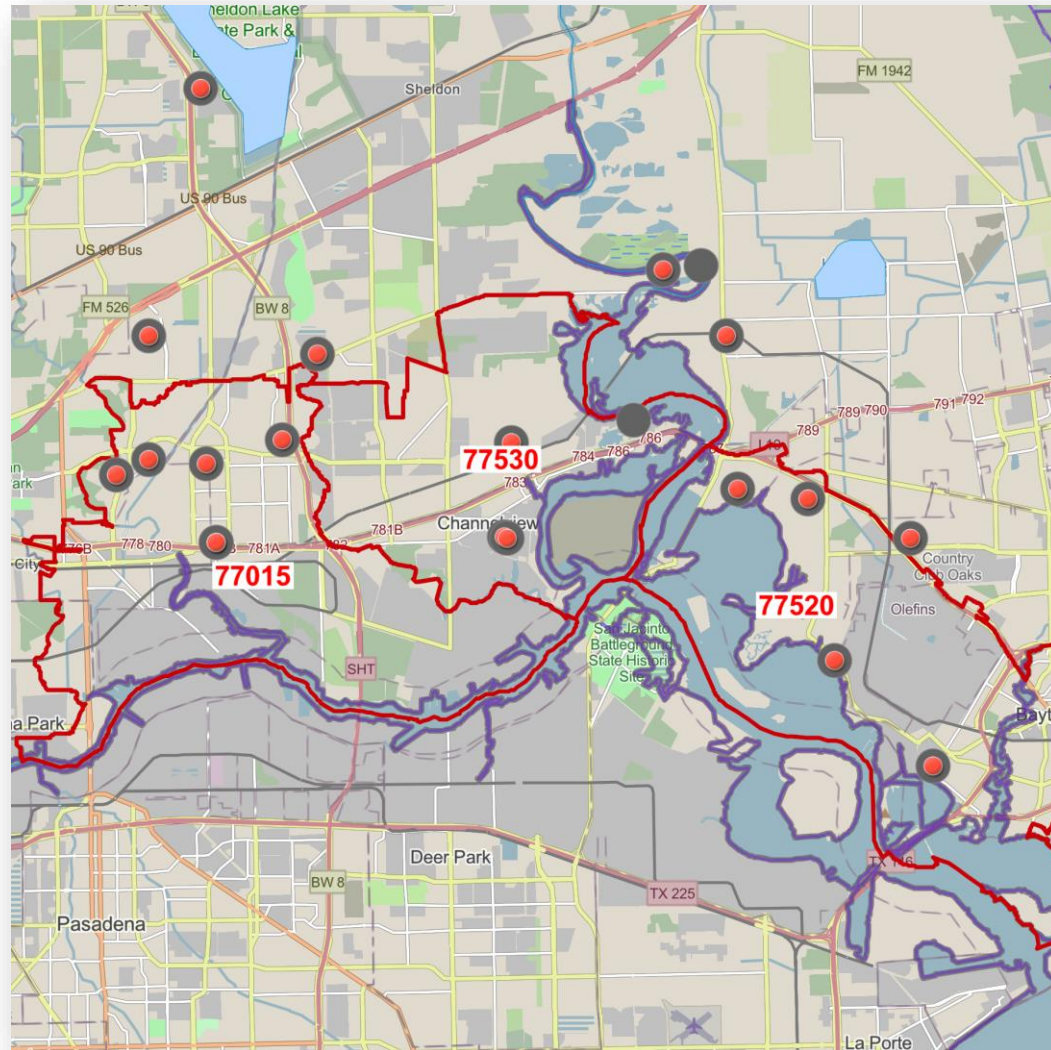


77445	16
77484	12
77016	7
77015	6
77530	5
77008	4
77009	4
77022	4
77080	4
77433	4
77520	4

COOPERATION | COMMUNICATION | COORDINATION | COLLABORATION



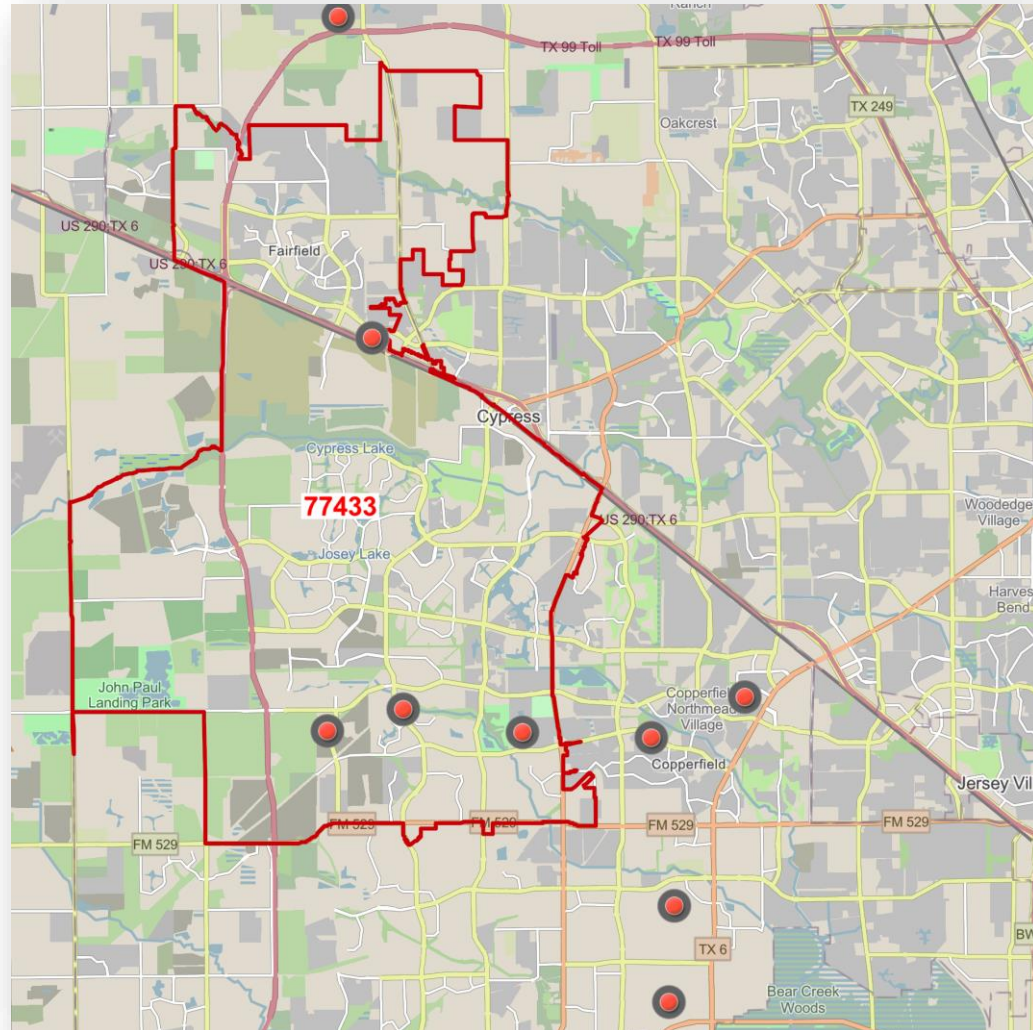
Channelview, 15 Shareable Reports



77445	16
77484	12
77016	7
77015	6
77530	5
77008	4
77009	4
77022	4
77080	4
77433	4
77520	4

COOPERATION | COMMUNICATION | COORDINATION | COLLABORATION

Cypress, 4 Shareable Reports



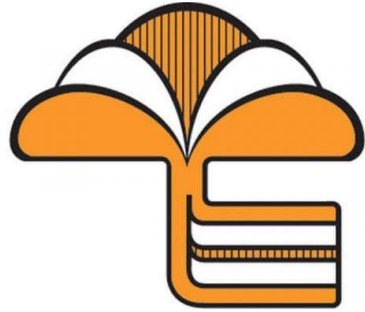
77445	16
77484	12
77016	7
77015	6
77530	5
77008	4
77009	4
77022	4
77080	4
77433	4
77520	4

COOPERATION | COMMUNICATION | COORDINATION | COLLABORATION



Member and Guest Reports

Please State your Name and Organization



Texas Gulf Coast Regional Voluntary Organizations Active in Disaster

COOPERATION | COMMUNICATION | COORDINATION | COLLABORATION

See You Sunday Afternoon!

Be safe!

Check-ins

SitReps

Cooperation

Communication

Coordination

Collaboration

COOPERATION | COMMUNICATION | COORDINATION | COLLABORATION



**IT'S A MARATHON,
NOT A SPRINT**

