



Texas Gulf Coast Regional Voluntary Organizations Active in Disaster

COOPERATION | COMMUNICATION | COORDINATION | COLLABORATION

SE Texas Flooding Recovery Coordination Call

*please add your name, organization,
mobile phone, email, and the status
of your organization (Active/Standby)
and the resource/service you offer to the chat*



COOPERATION | COMMUNICATION | COORDINATION | COLLABORATION



Agenda

Welcome

name, organization, mobile phone, email

Status (active, stand-by) and resource/service

Course of Action / Period Objectives

Weather and Flooding

Updates on Damage and Muck and Gut Activity

Reports from Jurisdictions

Reports from Members and Guests

Closing Comments and Review of Actions for the Next Period.

Course of Action Period Objectives

COOPERATION | COMMUNICATION | COORDINATION | COLLABORATION



Course of Action / Objectives

1. Support Human Services – Case Management
2. Build our Situational Awareness
 - Encourage iStat, Crisis Cleanup, Connective
 - Damage Assessment & Identify unmet needs
 - SitReps
3. Work jobs using Crisis Cleanup
 - Identify jobs
 - Record work
4. Manage Resources
 - Leave no Individual, Family, or Community Behind
 - TGCRVOAD to identify underserved communities
5. Transition to the LTRC

More Crews
Reporting Completions
High SVI

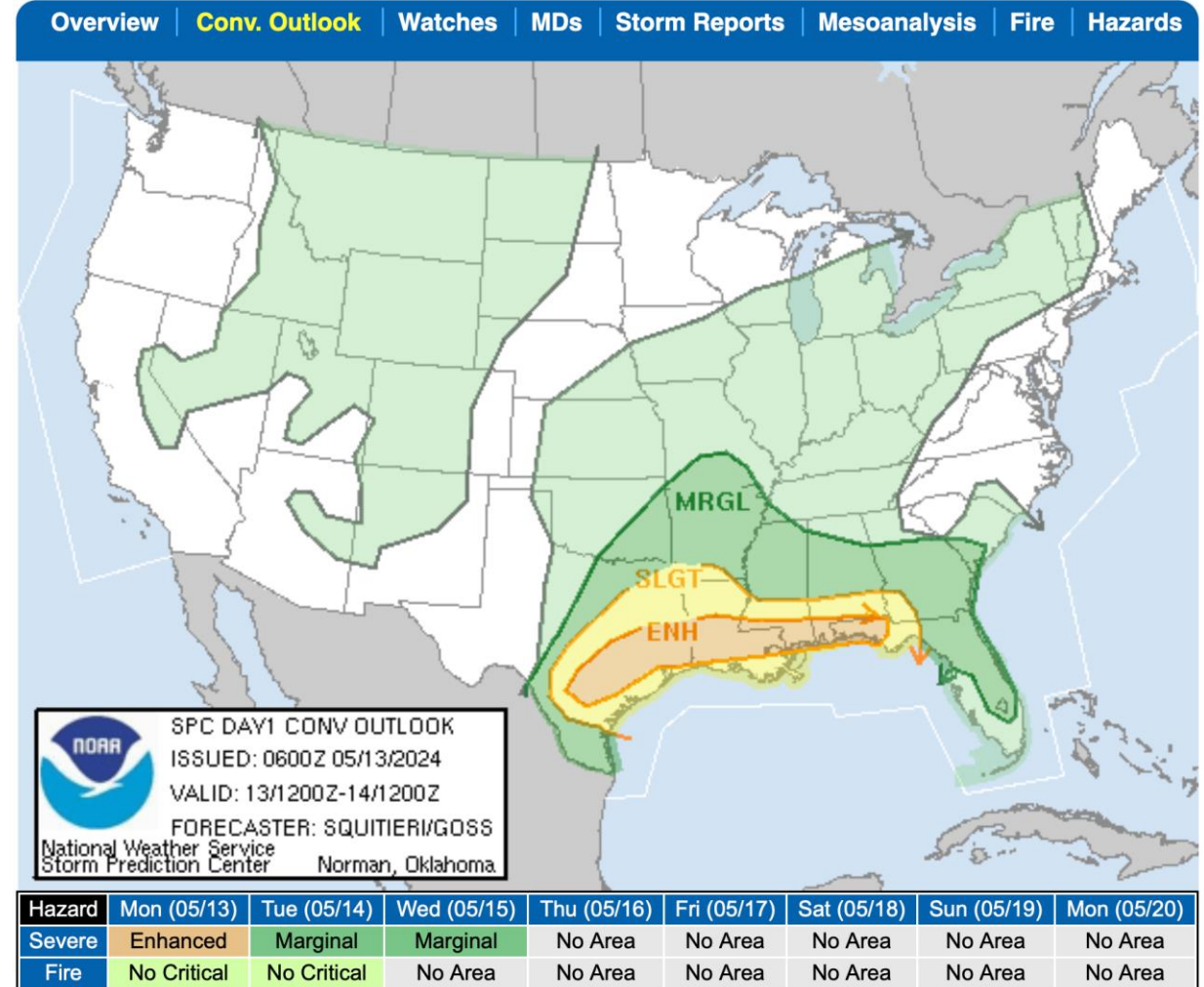
Weather and Flooding

COOPERATION | COMMUNICATION | COORDINATION | COLLABORATION



Weather for Responders

Mon 13	86°/65°	PM Thunderstorms	65%	S 16 mph
Tue 14	91°/68°	Partly Cloudy	8%	NW 15 mph
Wed 15	92°/72°	Mostly Sunny	7%	ESE 16 mph
Thu 16	81°/73°	Thunderstorms	83%	ESE 16 mph
Fri 17	86°/74°	Scattered Thunderstorms	54%	SE 13 mph
Sat 18	89°/74°	Isolated Thunderstorms	32%	ESE 14 mph
Sun 19	90°/75°	PM Thunderstorms	36%	SE 15 mph
Mon 20	92°/75°	Isolated Thunderstorms	34%	SE 15 mph
Tue 21	89°/75°	Partly Cloudy	13%	ESE 16 mph
Wed 22	92°/76°	Partly Cloudy	7%	SE 17 mph
Thu 23	93°/77°	Partly Cloudy	15%	SSE 17 mph
Fri 24	92°/77°	Partly Cloudy	24%	SE 17 mph



Hazardous Weather Outlook



Hazardous Weather Outlook: Today & This Evening

Excessive Rainfall Outlook 7 AM Mon - 7 AM Tue



Severe Weather Outlook 7 AM Mon - 7 AM Tue



WHAT

- Locally heavy rainfall could result in flash flooding.
- **Slight risk** (level 2 of 4) exists for central and northeast areas of southeast Texas.
- **Marginal risk** (level 1 of 4) exists elsewhere.
- Isolated to scattered strong to severe thunderstorms possible.
- **Enhanced risk** (level 3 of 5) most of southeast Texas
- **Slight risk** (level 2 of 5) southeast areas



TIMING

- Scattered storms around midday. An organized area of storms likely late afternoon and evening.



IMPACTS

- **Localized flash flooding** is possible as well as additional rises along area rivers and creeks.
- **Large hail** and **damaging wind gusts** are the primary concerns. **Isolated tornadoes** possible as well.



ACTIONS

- Never drive through flooded roadways...turn around, don't drown!
- Remain weather aware and have multiple ways to receive warnings.

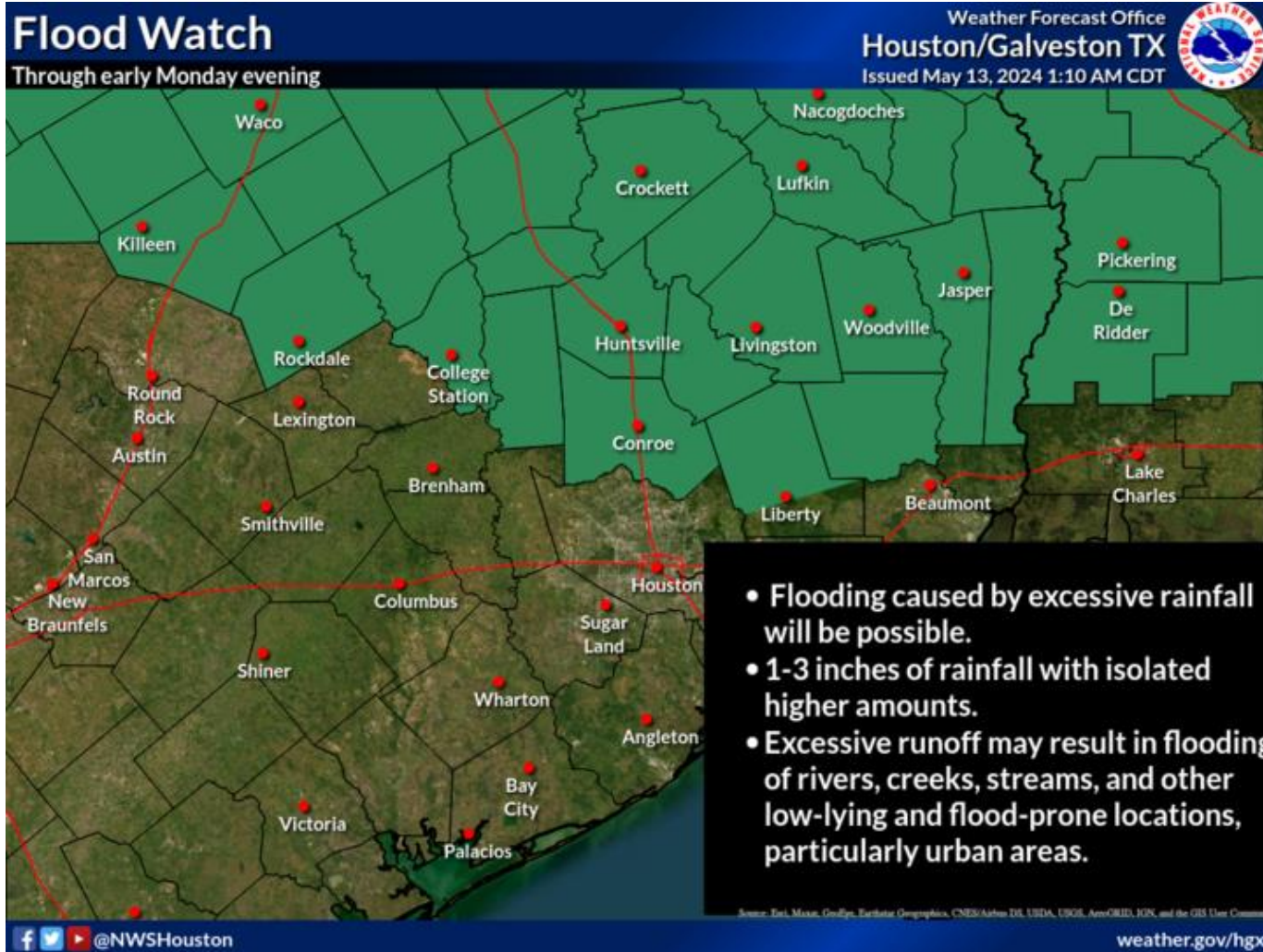
NATIONAL WEATHER SERVICE Houston/Galveston, TX

ISSUED: 3:10 AM - Monday, May 13, 2024

COOPERATION | COMMUNICATION | COORDINATION | COLLABORATION

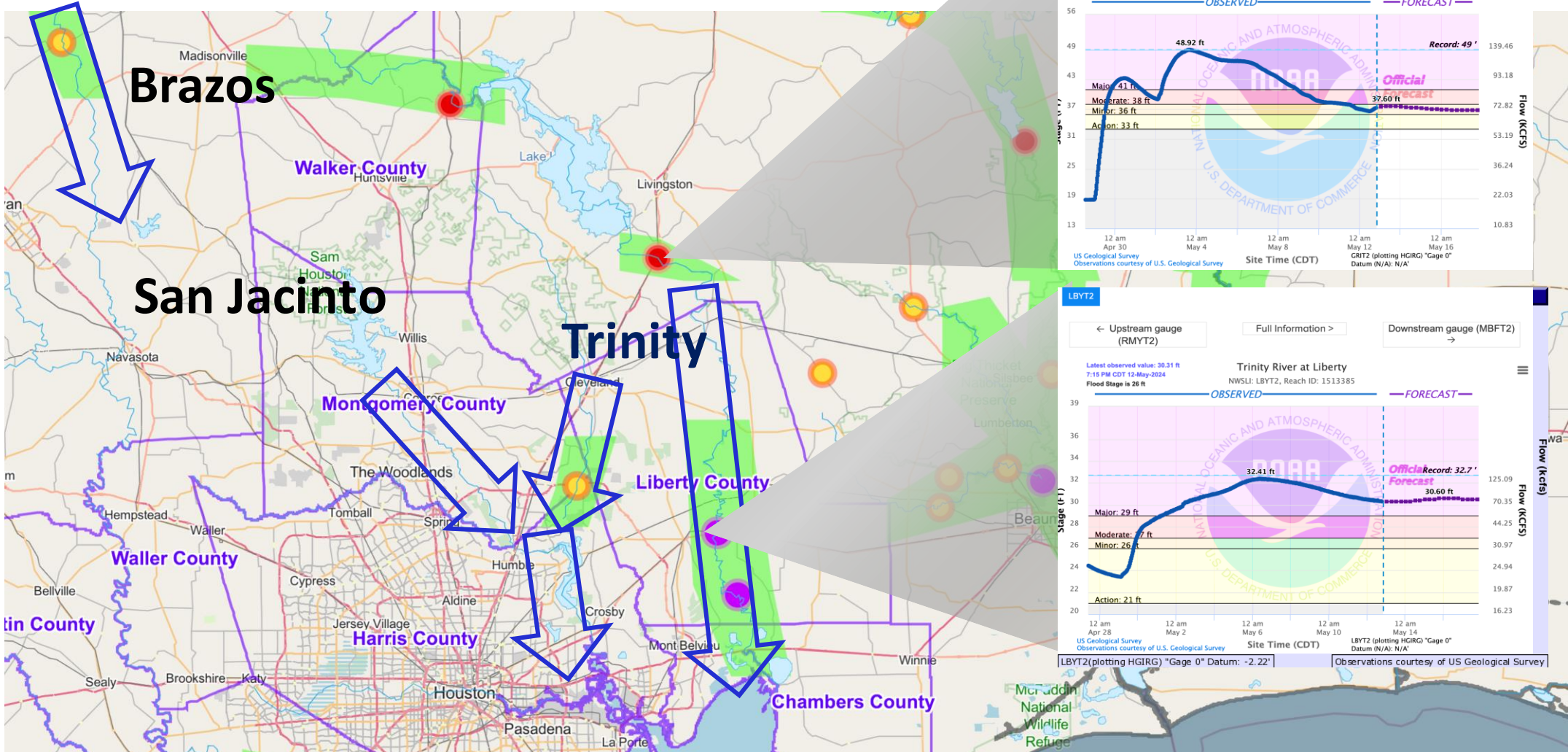


Hazardous Weather Outlook



Flood Watch into Monday evening

Area Flooding



COOPERATION | COMMUNICATION | COORDINATION | COLLABORATION



Damage Assessment

COOPERATION | COMMUNICATION | COORDINATION | COLLABORATION



iSTAT – TGCRVOAD

TDEM iSTAT Dashboard ****FOR OFFICIAL INTERNAL USE ONLY****
☰

Need VOAD Cleanup Assistance 583		Dest + Major 395 <small>Today: 57</small>	Destroyed 13 <small>Today: 1</small>	Major 382 <small>Today: 56</small>	Minor 380 <small>Today: 30</small>	Affected 243 <small>Today: 24</small>	Validated 1,022 <small>Today: 111</small>	Needs Review 61 <small>Today: 1</small>			
Filtered Export ↓		Survivor		TDEM Region		TDEM HQ		FEMA Certified			
General Clean Up 478		Debris Removal 464		Muck Out/Sheet Rock 362		Tarping 84		Chainsaw Work 115		Heavy Equipment 95	

Incident You are Viewing: **24-0014 26APR Severe Weather**

Texas Parks & Wildlife, CONANP, Esri, TomTom, Garmin, FAO, NOAA, USGS, EPA, NP... Powered by Esri

VOAD Cleanup

COOPERATION | COMMUNICATION | COORDINATION | COLLABORATION



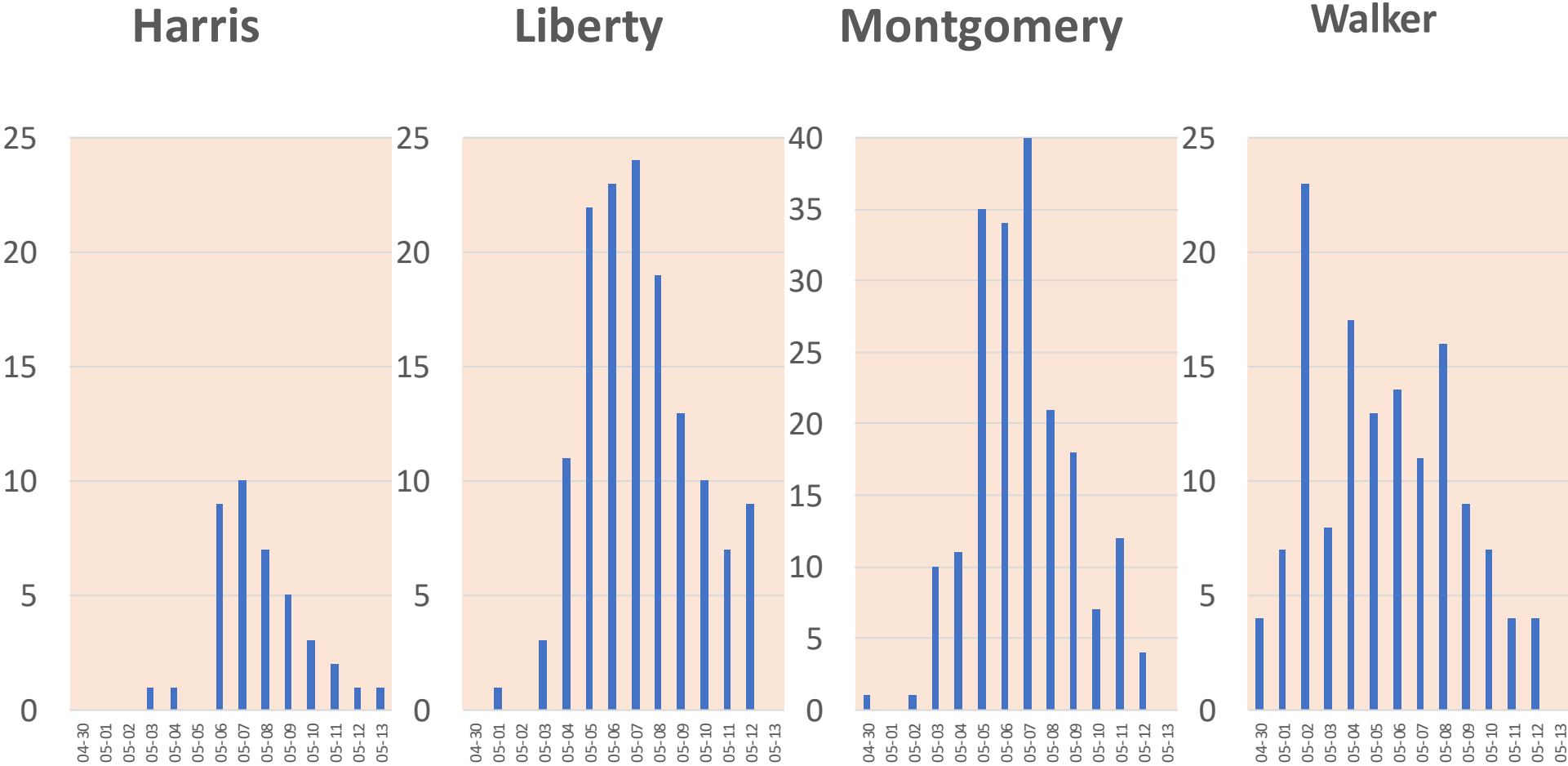
Harris, Liberty, Montgomery, Walker

	04-30	05-01	05-02	05-03	05-04	05-05	05-06	05-07	05-08	05-09	05-10	05-11	05-12	05-13	TOTAL	
Harris County					1	1		9	10	7	5	3	2	1	1	40
affected								2	1	1	1	1				6
minor								2	1	3	2	1		1		10
major						1		5	6	3	2	1	1		1	20
destroyed					1				2				1			4
Liberty County			1		3	11	22	23	24	19	13	10	7	9		142
affected							3	1		1	1		1	3		10
minor					3	4	2	7	8	5	2	2	2	2		37
major			1			7	10	14	16	9	7	6	4	3		77
destroyed							7	1		4	3	2		1		18
Montgomery County	1			1	10	11	35	34	40	21	18	7	12	4		194
affected					2	2	2	5	8	3		1				23
minor				1	1		5	7	6	3	3	1	2	1		30
major	1				6	7	25	20	24	13	13	4	9	3		125
destroyed					1	2	3	2	2	2	2	1	1			16
Walker County	4	7	23	8	17	13	14	11	16	9	7	4	4			137
affected				3	1	3	2	2		2	3	1	1	1		19
minor	1	1	9	5	6	6	3	3	8	3	4	1	1	1		51
major	3	6	11	2	7	5	8	8	4	3	2	2	2	2		63
destroyed					1		1		2							4
TOTAL	5	8	24	22	40	70	80	85	63	45	27	25	18	1		513

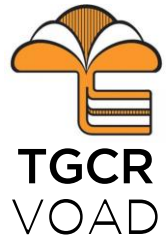
COOPERATION | COMMUNICATION | COORDINATION | COLLABORATION



Harris, Liberty, Montgomery, Walker



COOPERATION | COMMUNICATION | COORDINATION | COLLABORATION

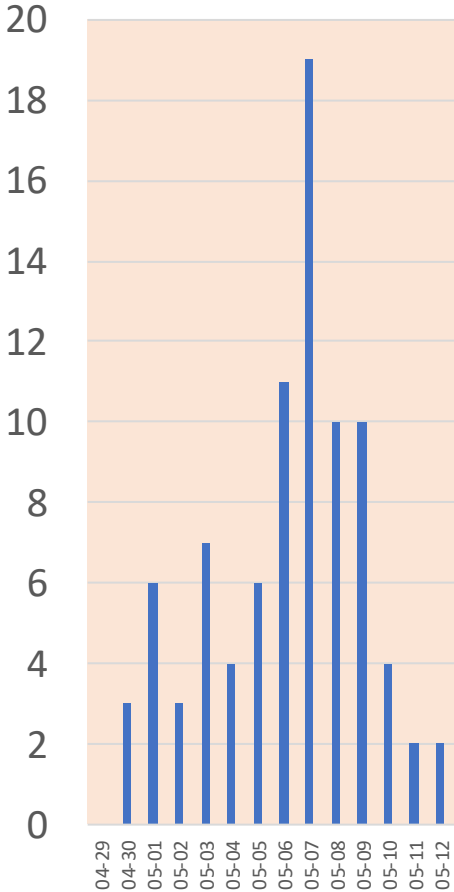


Polk, San Jacinto, Trinity

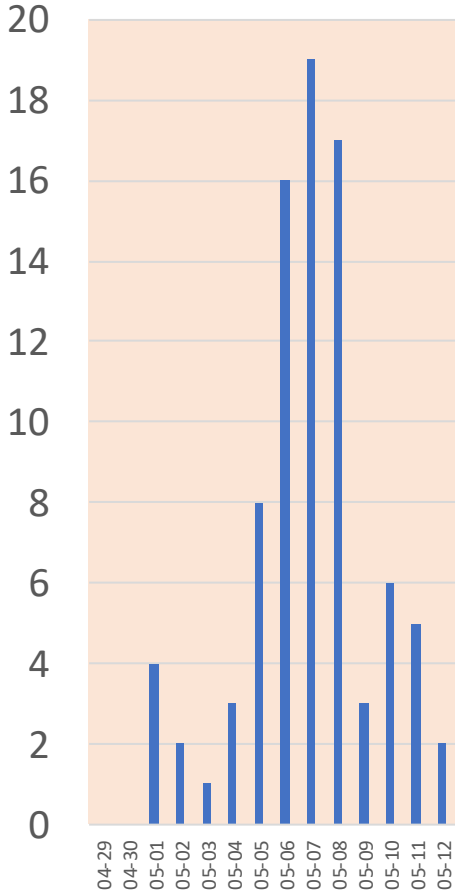
	04-29	04-30	05-01	05-02	05-03	05-04	05-05	05-06	05-07	05-08	05-09	05-10	05-11	05-12	TOTAL
Polk County		3	6	3	7	4	6	11	19	10	10	4	2	2	87
affected		1			1			1	3	4	1				11
minor		1	2	2		2		1	7	3	2	3	1	1	25
major			2	1	3	1	6	8	8	2	7	1	1	1	41
destroyed		1	2		3	1		1	1	1					10
San Jacinto County			4	2	1	3	8	16	19	17	3	6	5	2	86
affected							1		2	1			2		6
minor			1		1				4	3		1	1		11
major			3	2			4	10	11	11	2	2	2	1	48
destroyed						3	3	6	2	2	1	3		1	21
Trinity County	1		2	3			1	1	5	2	2	2	1	4	24
affected			2												2
minor	1			1				1		1	1	1		2	8
major				1			1		5		1	1	1	2	12
destroyed				1						1					2
TOTAL	1	3	12	8	8	7	15	28	43	29	15	12	8	8	197

Polk, San Jacinto, Trinity

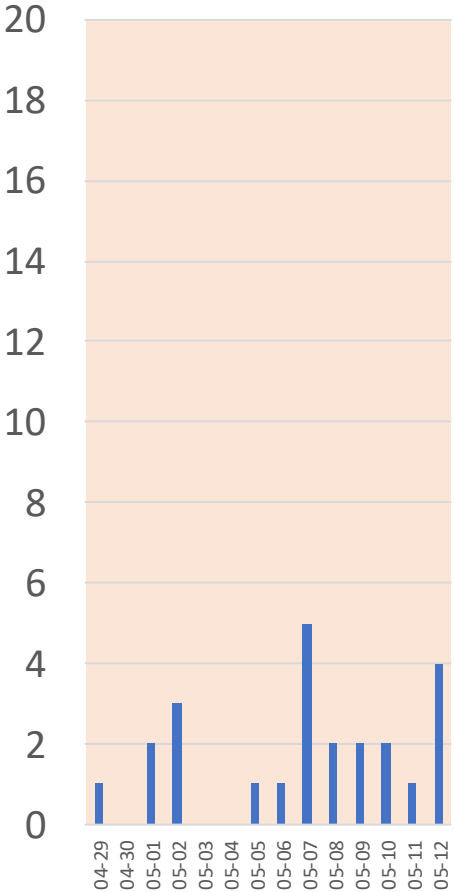
Polk



San Jacinto



Trinity

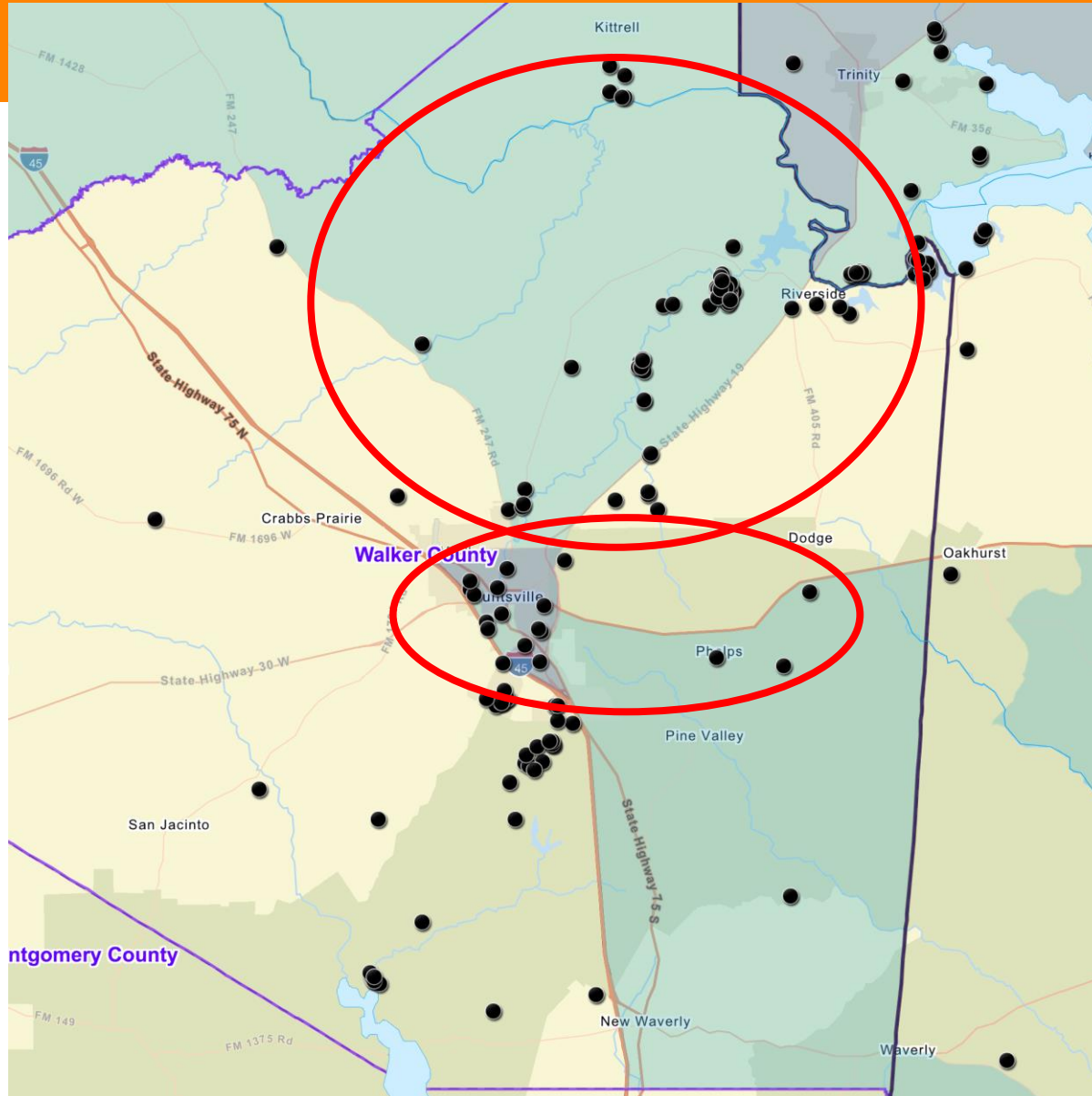


COOPERATION | COMMUNICATION | COORDINATION | COLLABORATION



Reports from Counties

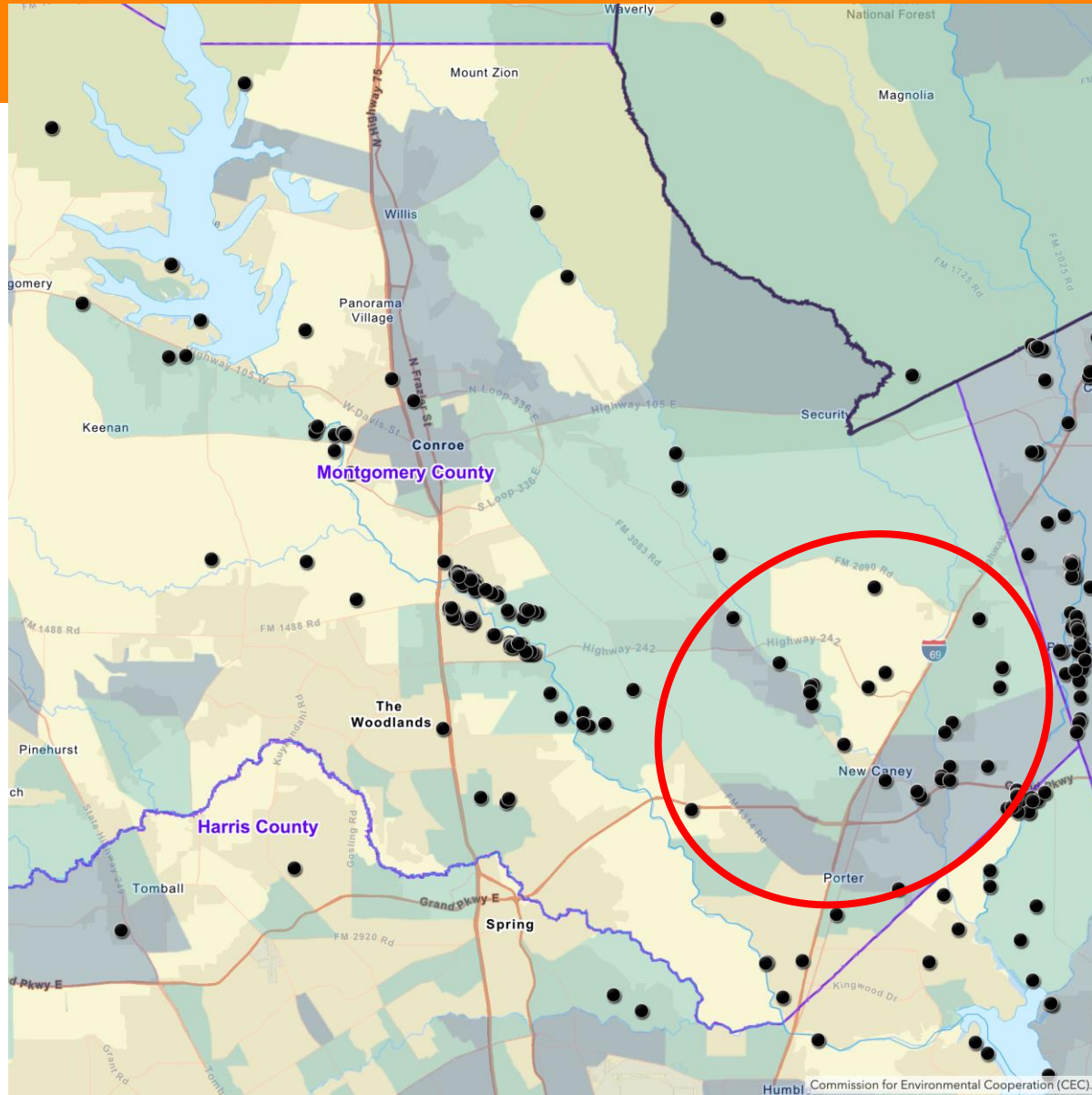
Walker
Montgomery
Harris
Liberty
San Jacinto
Polk
Trinity



137 Shareable Reports

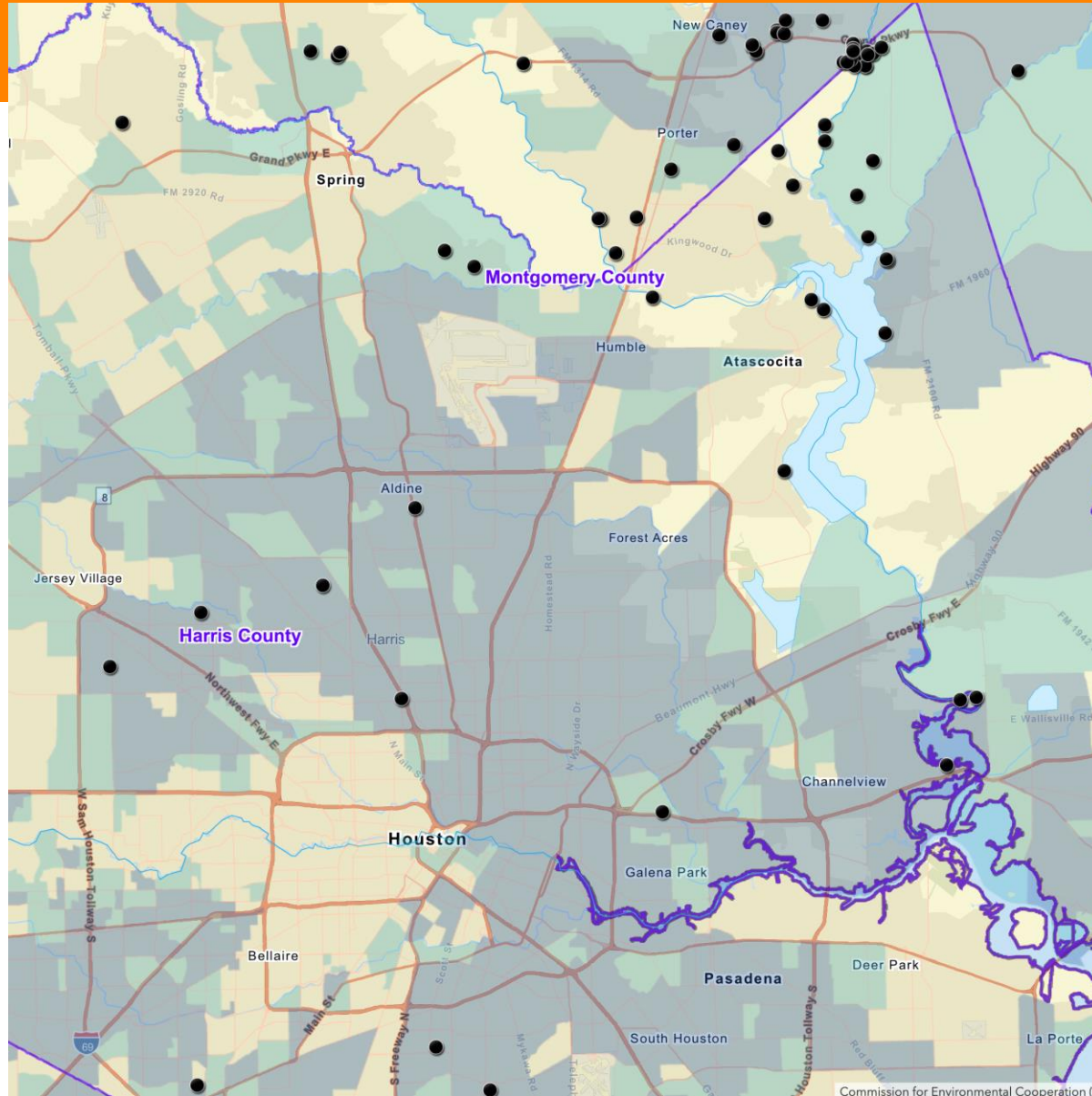
- Team Rubicon
- First United Methodist Church Huntsville

Montgomery



194 Shareable Reports

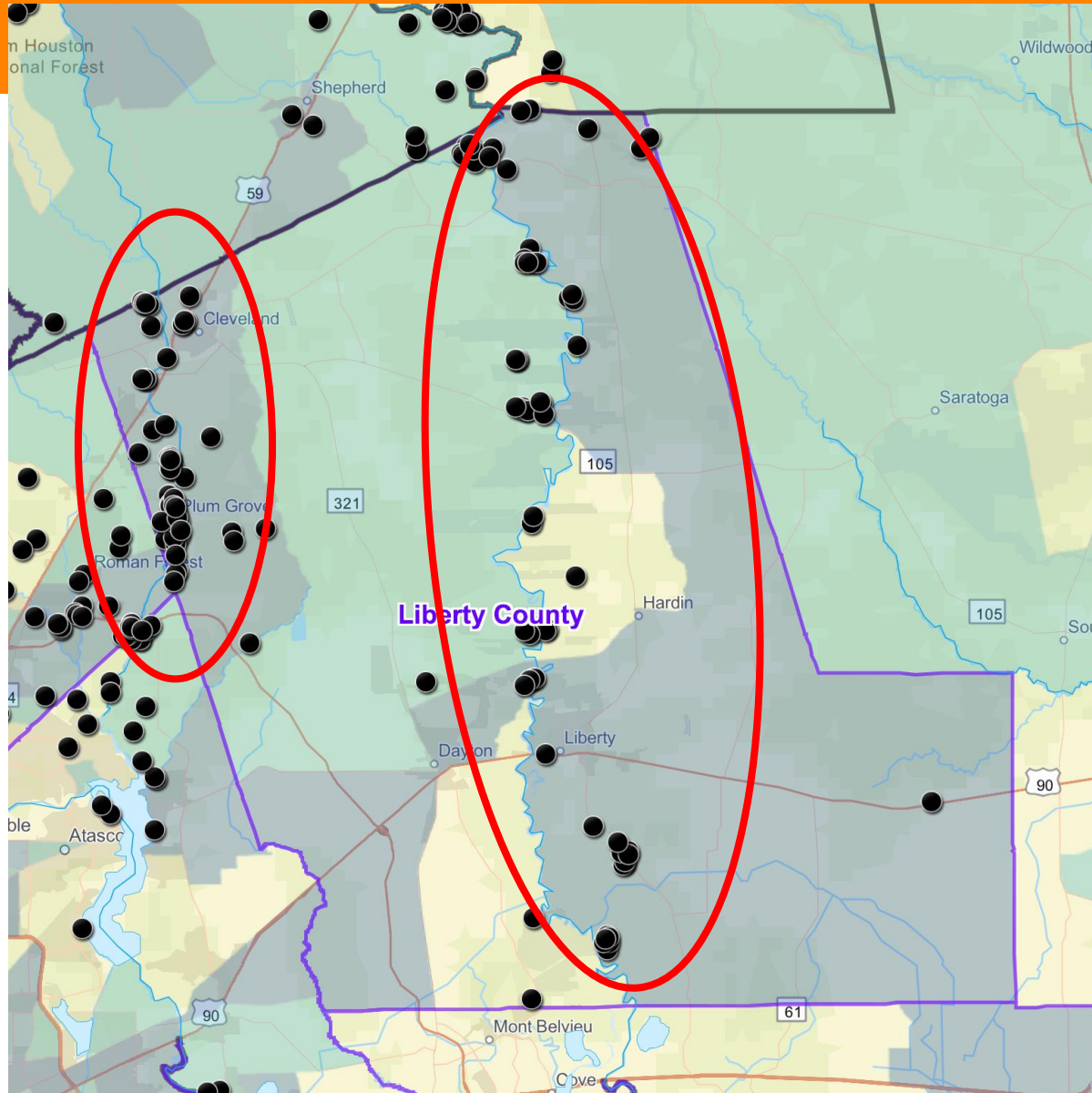
- **River Plantation Community Improvement Association**
- **Texans on Mission**
- **The Church of Jesus Christ of Latter-day Saints**
- **The Restoration Team**
- **TXCDR**
- **TX-LA Lutheran Synod**



40 Shareable Reports

COOPERATION | COMMUNICATION | COORDINATION | COLLABORATION

Liberty



142 Shareable Reports

- **Cajun Navy Ground Force**

COOPERATION | COMMUNICATION | COORDINATION | COLLABORATION

iSTAT – San Jacinto, Polk, Tyler

Need VOAD Cleanup Assistance **222**

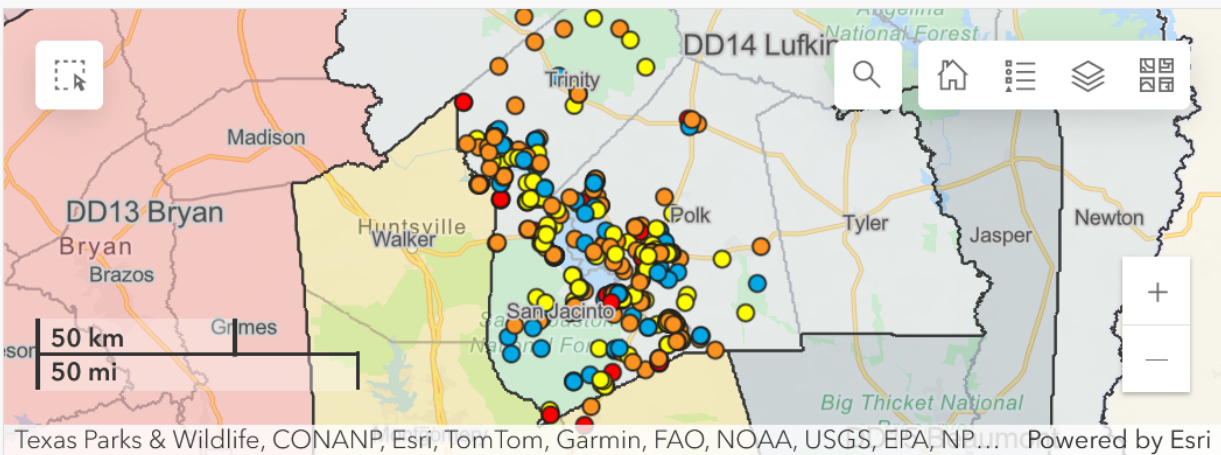
Filtered Export

General Clean Up	Debris Removal
184	181
Muck Out/Sheet Rock	Tarping
124	32
Chainsaw Work	Heavy Equipment
44	54

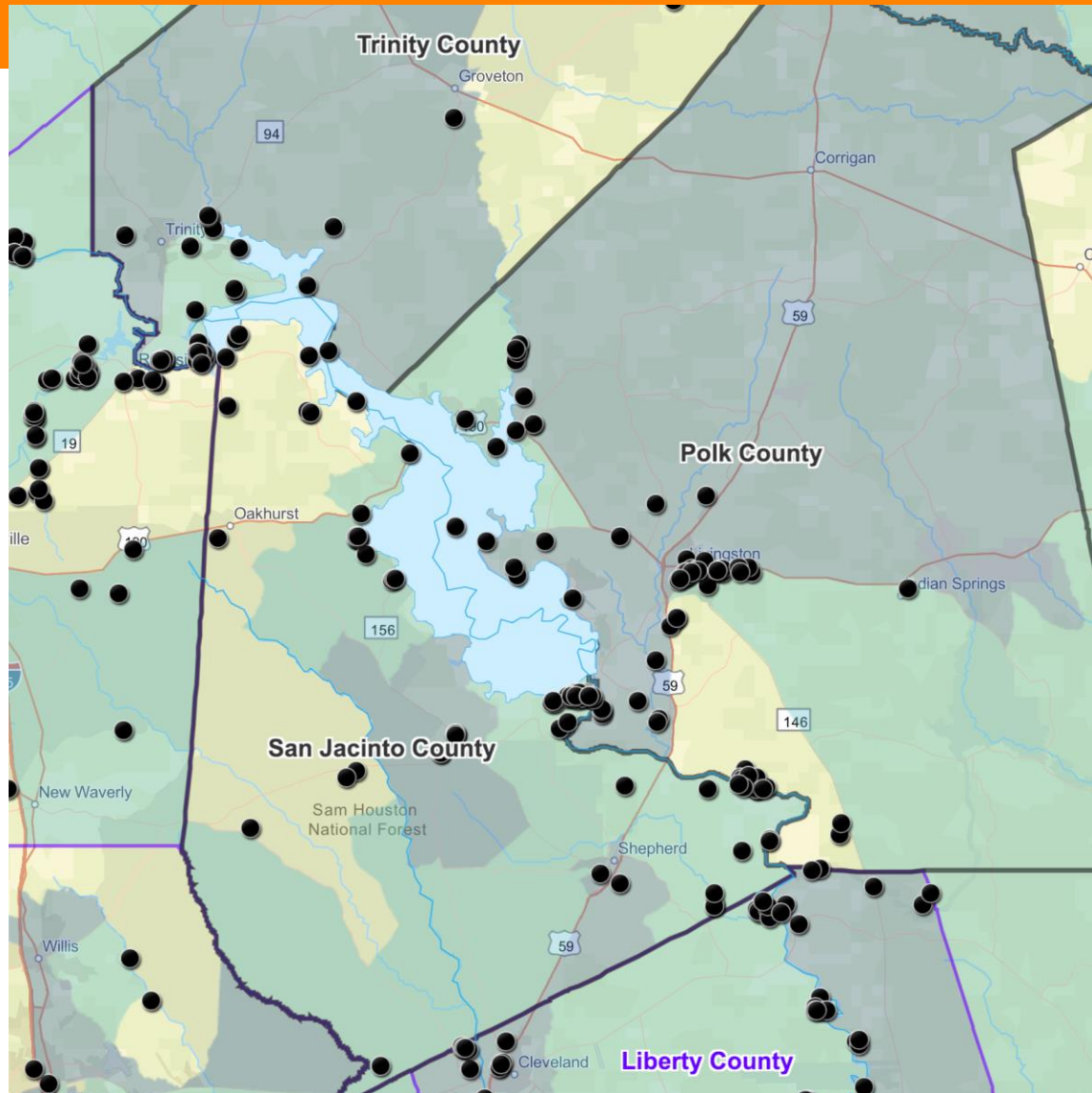
VOAD Cleanup

Dest + Major 165 Today: 11	Destroyed 20 Today: 0	Major 145 Today: 11	Minor 147 Today: 16	Affected 136 Today: 15	Validated 450 Today: 42	Needs Review 27 Today: 0
Survivor	TDEM Region	TDEM HQ	FEMA Certified			

Incident You are Viewing: **24-0014 26APR Severe Weather**



Trinity, Polk, San Jacinto



197 Shareable Reports

COOPERATION | COMMUNICATION | COORDINATION | COLLABORATION



Member and Guest Reports

Please State your Name and Organization



Texas Gulf Coast Regional Voluntary Organizations Active in Disaster

COOPERATION | COMMUNICATION | COORDINATION | COLLABORATION

See You Tuesday Morning!

*Be safe!
Check-ins
SitReps*

*Cooperation
Communication
Coordination
Collaboration*



COOPERATION | COMMUNICATION | COORDINATION | COLLABORATION



**IT'S A MARATHON,
NOT A SPRINT**

