



# Texas Gulf Coast Regional Voluntary Organizations Active in Disaster

COOPERATION | COMMUNICATION | COORDINATION | COLLABORATION

## December 2024 TORNADOS Recovery Coordination Call

*Please add your name, organization, mobile phone, email,  
and the status of your organization (Active/Standby)  
and the resource/service you offer to the chat*

COOPERATION | COMMUNICATION | COORDINATION | COLLABORATION



# Purpose of the Call

**Cooperation**  
**Communication**  
**Coordination**  
**Collaboration**

**Requests for Assistance**  
**Unmet Needs**  
**Resources**

COOPERATION | COMMUNICATION | COORDINATION | COLLABORATION

# Situational Brief

## Damage Assessment

COOPERATION | COMMUNICATION | COORDINATION | COLLABORATION

# Agenda

**Welcome**

**Course of Action / Period Objectives (IAP)**

**Situation Brief**

Situation Brief – Storm Reports

Requests for Assistance

**Reports from Jurisdictions**

**Reports from Members and Guests**

**Closing Comments / Review of Actions for the Next Period.**

# Course of Action Period Objectives

COOPERATION | COMMUNICATION | COORDINATION | COLLABORATION

# Course of Action / Objectives

## 1. Build our Situational Awareness

- Reports from the Jurisdictions, RFAs
- iSTAT
- SitReps - Daily reporting

## 2. Support Humanitarian & Cleanup Efforts

- American Red Cross

## 3. Strategic Response

- Safety
- BE STRATEGIC!

## 4. Manage Resources

- Leave no individual, family, or community behind
- TGCRVOAD to identify underserved communities

## 5. Transition to the LTRC

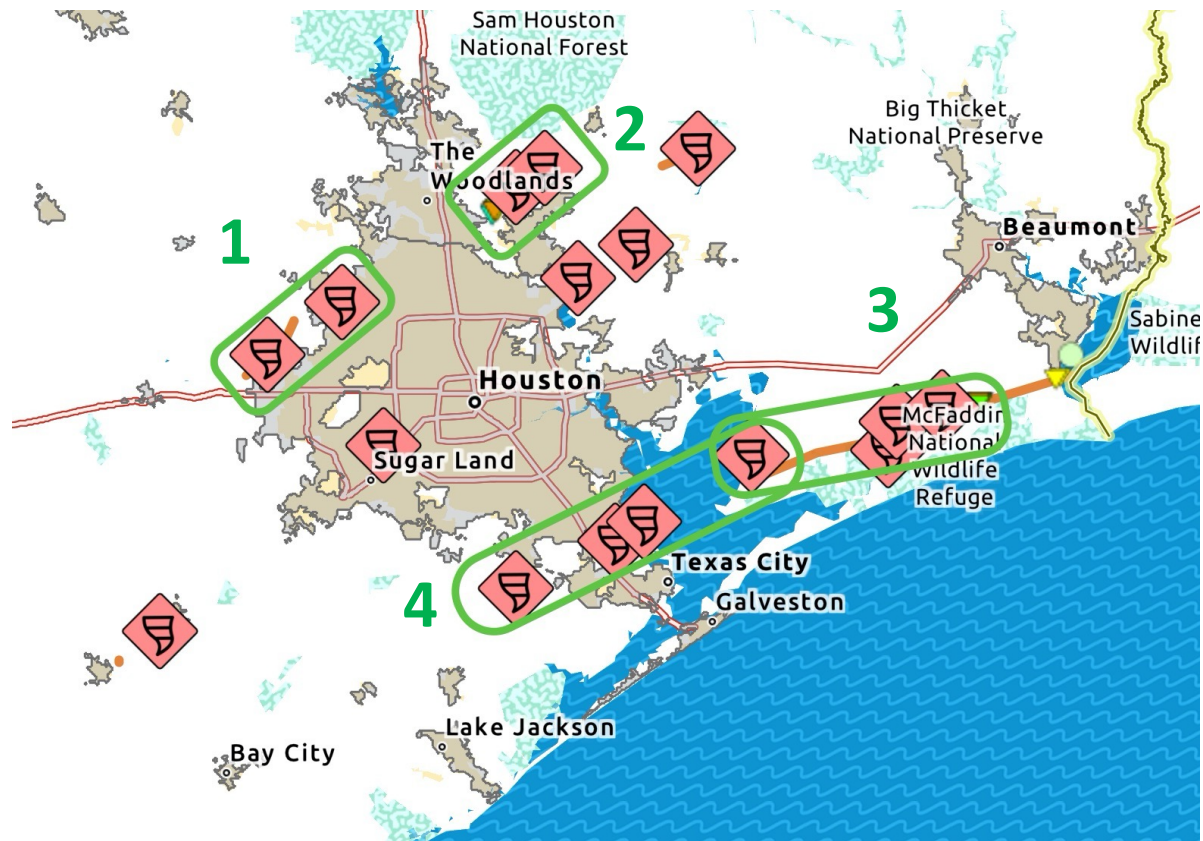
# Situational Brief

## Weather

COOPERATION | COMMUNICATION | COORDINATION | COLLABORATION



# Storm Reports / NWS Assessment

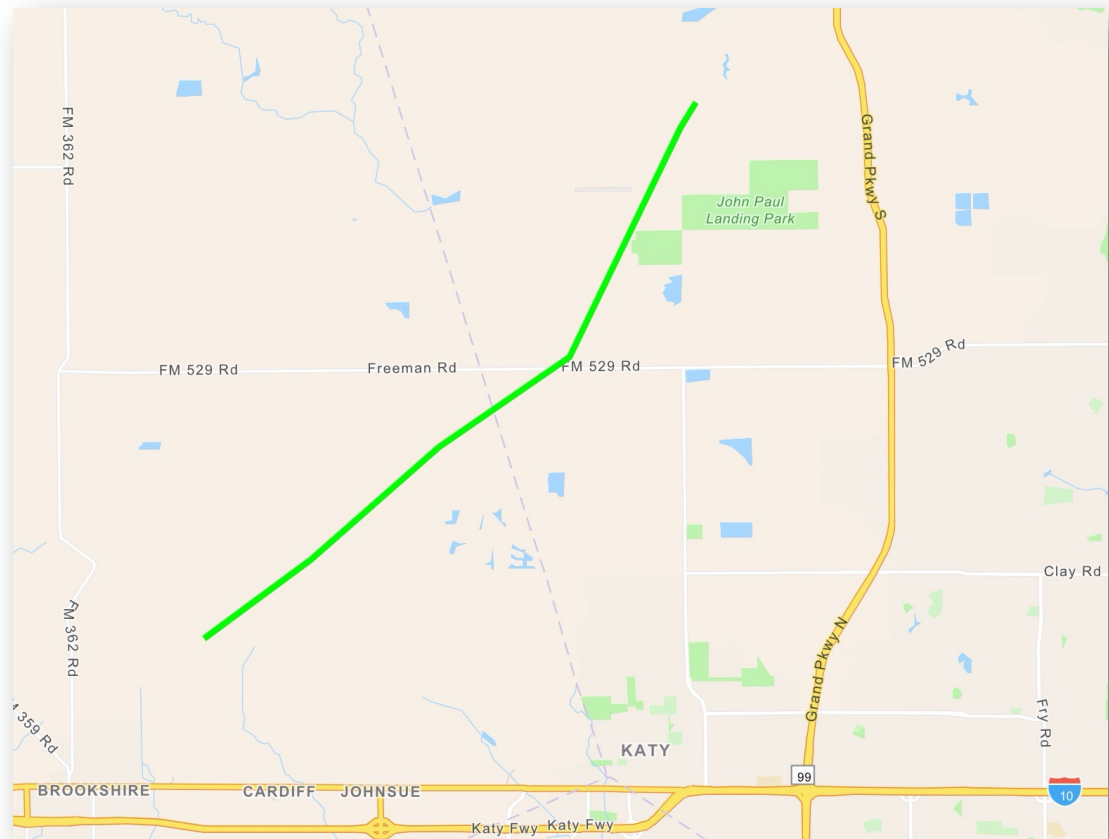


COOPERATION | COMMUNICATION | COORDINATION | COLLABORATION



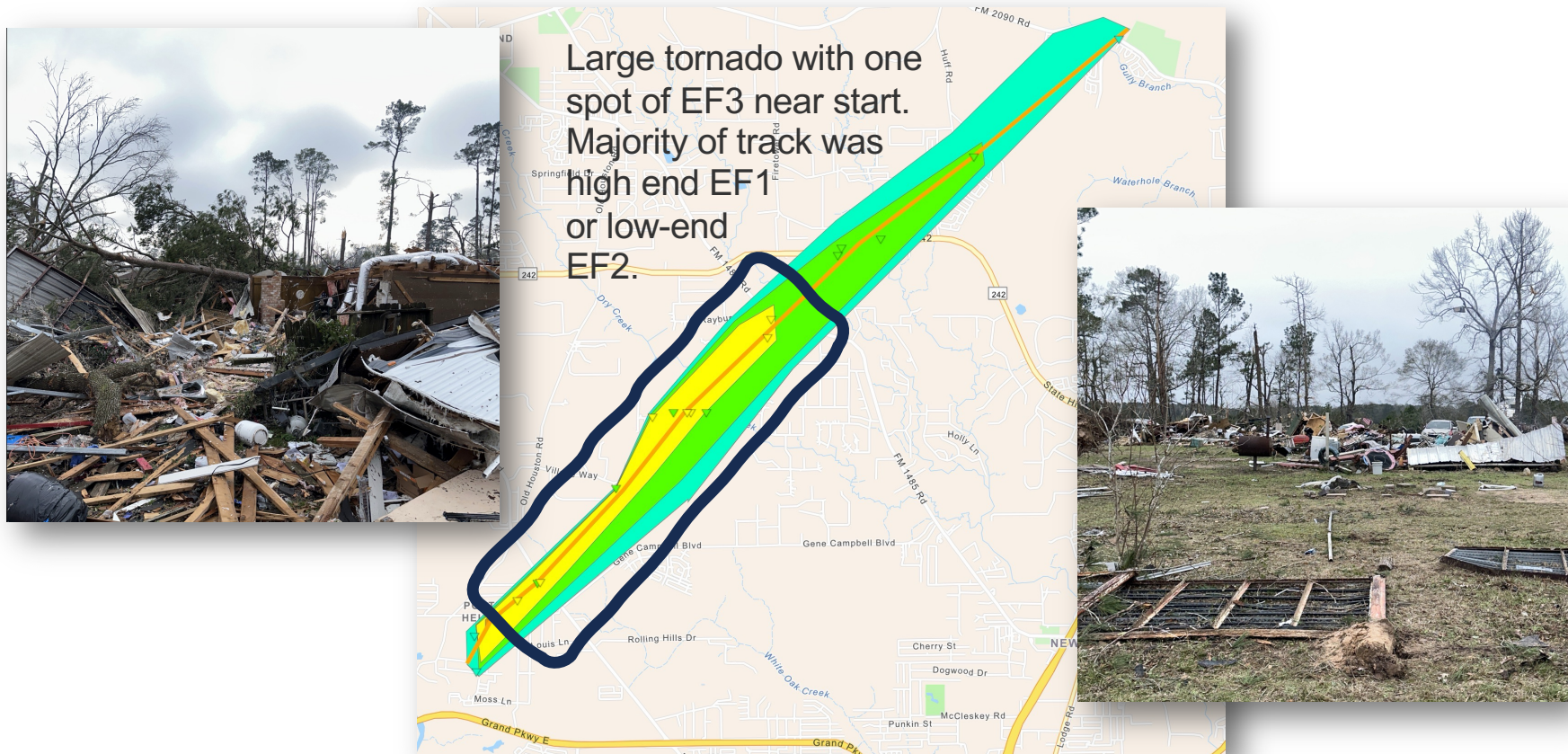
# 1. Waller (EF1)

**An EF-1 tornado occurred just a few miles northeast of Brookshire and north of Katy. Several homes were impacted with EF-0 and EF-1 damage, particularly along Noel Lane and near FM529 and Katy Hockley roads.**



COOPERATION | COMMUNICATION | COORDINATION | COLLABORATION

## 2. Montgomery County (EF3)



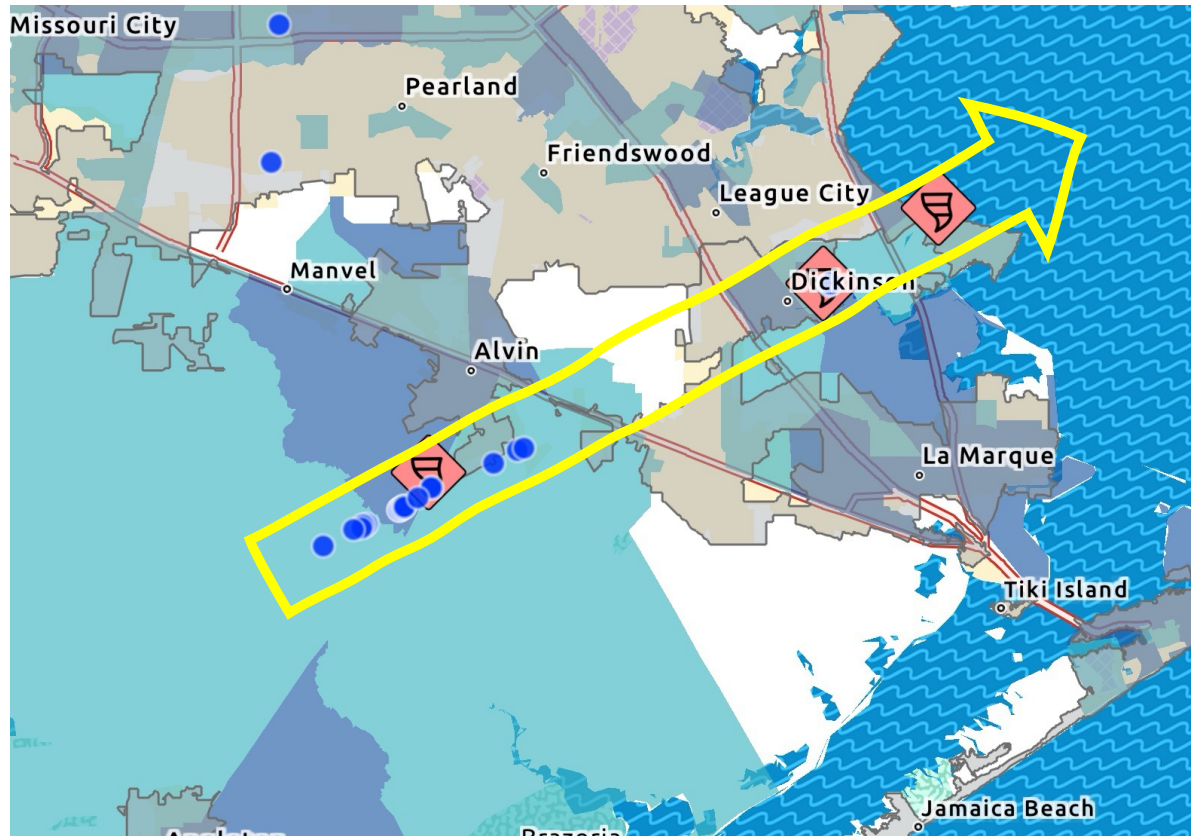
COOPERATION | COMMUNICATION | COORDINATION | COLLABORATION

# 3. Chambers County (EF3)

Long track tornado from just east of Smith Point through the Chambers/Jefferson County border. Multiple spots of EF2 damage with snapped wooden power line poles and a tossed and destroyed mobile home along with EF3 damage along FM 1941 and TX-124 where two steel transmission lines were blown down. One injury along Smith Point Rd where a pickup truck was tossed.

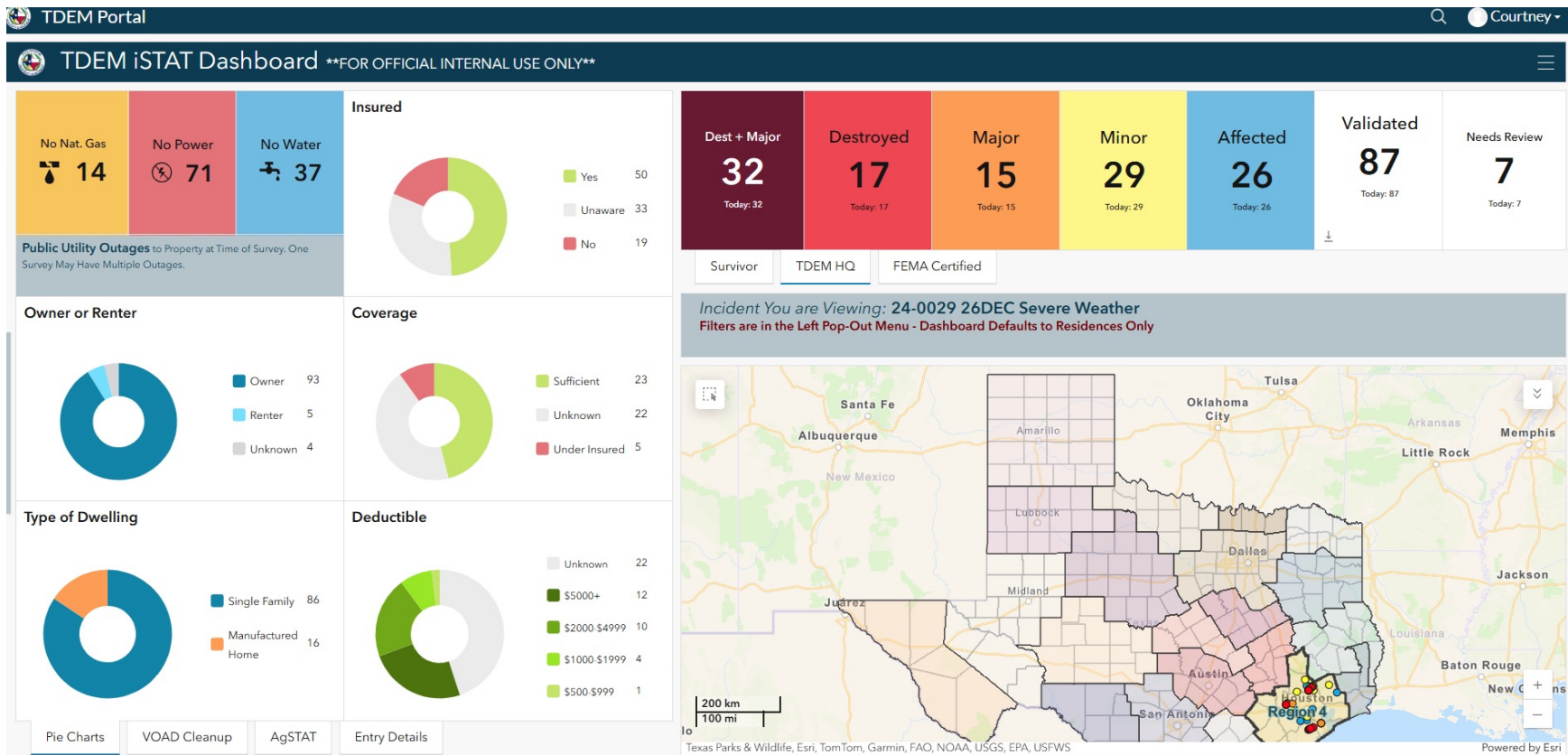


# 4. Brazoria County



COOPERATION | COMMUNICATION | COORDINATION | COLLABORATION

# TDEM Dashboard



COOPERATION | COMMUNICATION | COORDINATION | COLLABORATION

# iSTAT - Chainsaw and Tarping

	Brazoria	Galveston	Harris	Liberty	Montgomery	Waller	Total
<b>destroyed</b>	10				4	2	16
<b>major</b>	5	1	2		5	2	15
<b>minor</b>	6	3	6		14		29
<b>affected</b>	1	1	8	2	10	3	25

<b>CHAINSAW</b>	0	1	0	0	4	1	6
<b>TARPING</b>	0	0	0	0	1	0	1
<b>TOTAL</b>	22	5	16	2	33	7	85

COOPERATION | COMMUNICATION | COORDINATION | COLLABORATION



# Situational Brief

## Requests for Assistance

COOPERATION | COMMUNICATION | COORDINATION | COLLABORATION

# Montgomery County

- Neighborhood at porter lane and Youpon, FM 1485 at Pickering
- FM 1314 at 99
- Old Houston at Village Way
- 17900 block of Country Place Drive, Conroe (unincorporated)
- 16900 block of Pickering, Conroe (unincorporated – Grangerland area)
- 16400 block of Porter Lane, Porter
- 16800 block of Live Oak Branch Dr. – Porter
- 19000 block of Big Oak Drive – Conroe
- 17300 block of Bent Pine Drive – Conroe



# Structural Integrity

large cracks in walls or foundations  
Sagging roofs  
uneven floors  
leaning walls  
visible damage to support beams  
missing shingles, damaged flashing, broken rafters  
water stains on ceilings  
signs of shifting or settling (windows, doors)

if you see any of these, consult a professional engineer or building inspector for a thorough evaluation.

# Reports from Jurisdictions

**Please State Your Name and Jurisdiction**  
**Requests for Assistance**

COOPERATION | COMMUNICATION | COORDINATION | COLLABORATION

# Reports from Members and Guests

**Please State your Name and Organization  
Activities, Unmet Needs, Resources**

COOPERATION | COMMUNICATION | COORDINATION | COLLABORATION



# Texas Gulf Coast Regional Voluntary Organizations Active in Disaster

COOPERATION | COMMUNICATION | COORDINATION | COLLABORATION

*TGCRVOAD*

*chair.tgcrvoad@icloud.com*

*TDEM R4 VAL*

*Tonya.Clarke@tdem.texas.gov*

COOPERATION | COMMUNICATION | COORDINATION | COLLABORATION



**IT'S A MARATHON,  
NOT A SPRINT**

