



Texas Gulf Coast Regional Voluntary Organizations Active in Disaster

COOPERATION | COMMUNICATION | COORDINATION | COLLABORATION

December 2024 Tornadoes Recovery Coordination Call

*Please add your name, organization, mobile phone, email,
and the status of your organization (Active/Standby)
and the resource/service you offer to the chat*

COOPERATION | COMMUNICATION | COORDINATION | COLLABORATION



Purpose of the Call

**Cooperation
Communication
Coordination
Collaboration**

**Requests for Assistance
Unmet Needs
Resources**

COOPERATION | COMMUNICATION | COORDINATION | COLLABORATION

Agenda

Welcome

Situation Brief

Weather

Situation Brief – Storm Reports

Requests for Assistance

Course of Action / Period Objectives (IAP)

SitReps

Reports from Jurisdictions

Reports from Members and Guests

Closing Comments / Review of Actions for the Next Period.

COOPERATION | COMMUNICATION | COORDINATION | COLLABORATION

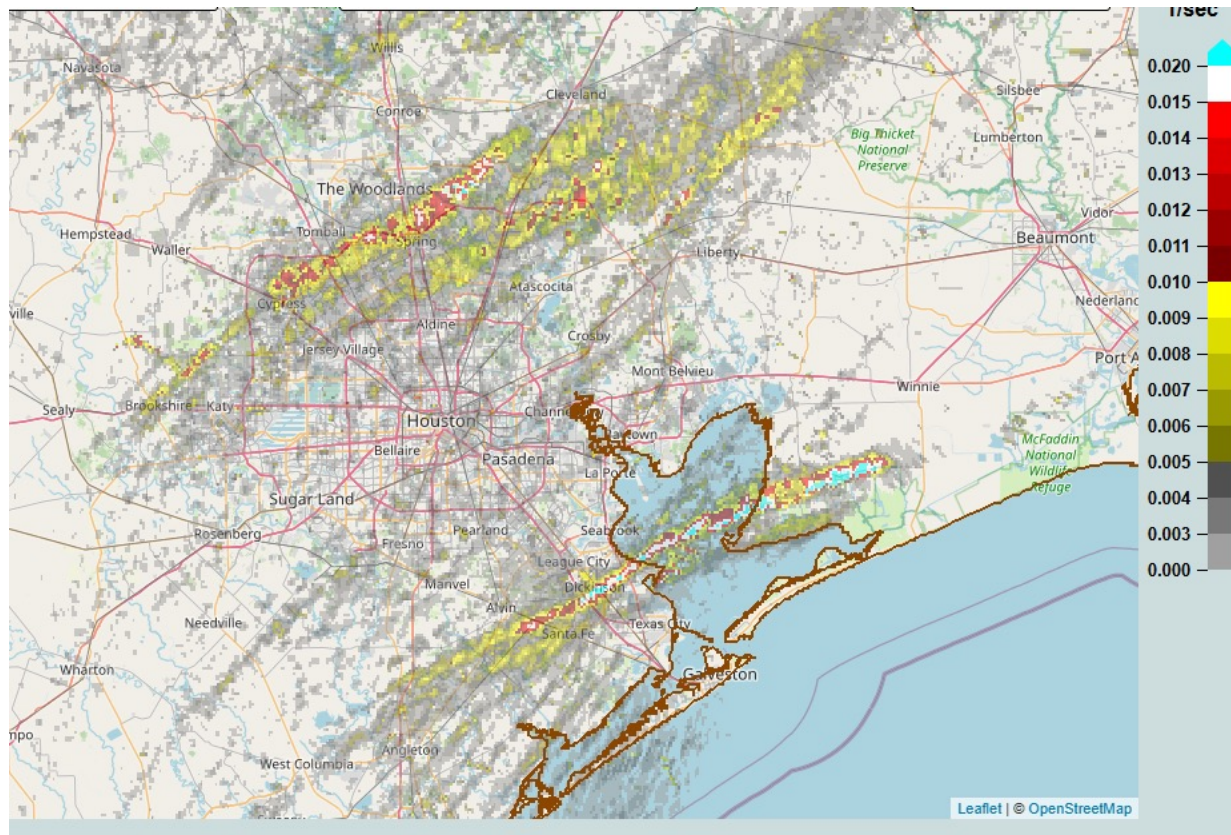
Situational Brief

Weather

COOPERATION | COMMUNICATION | COORDINATION | COLLABORATION

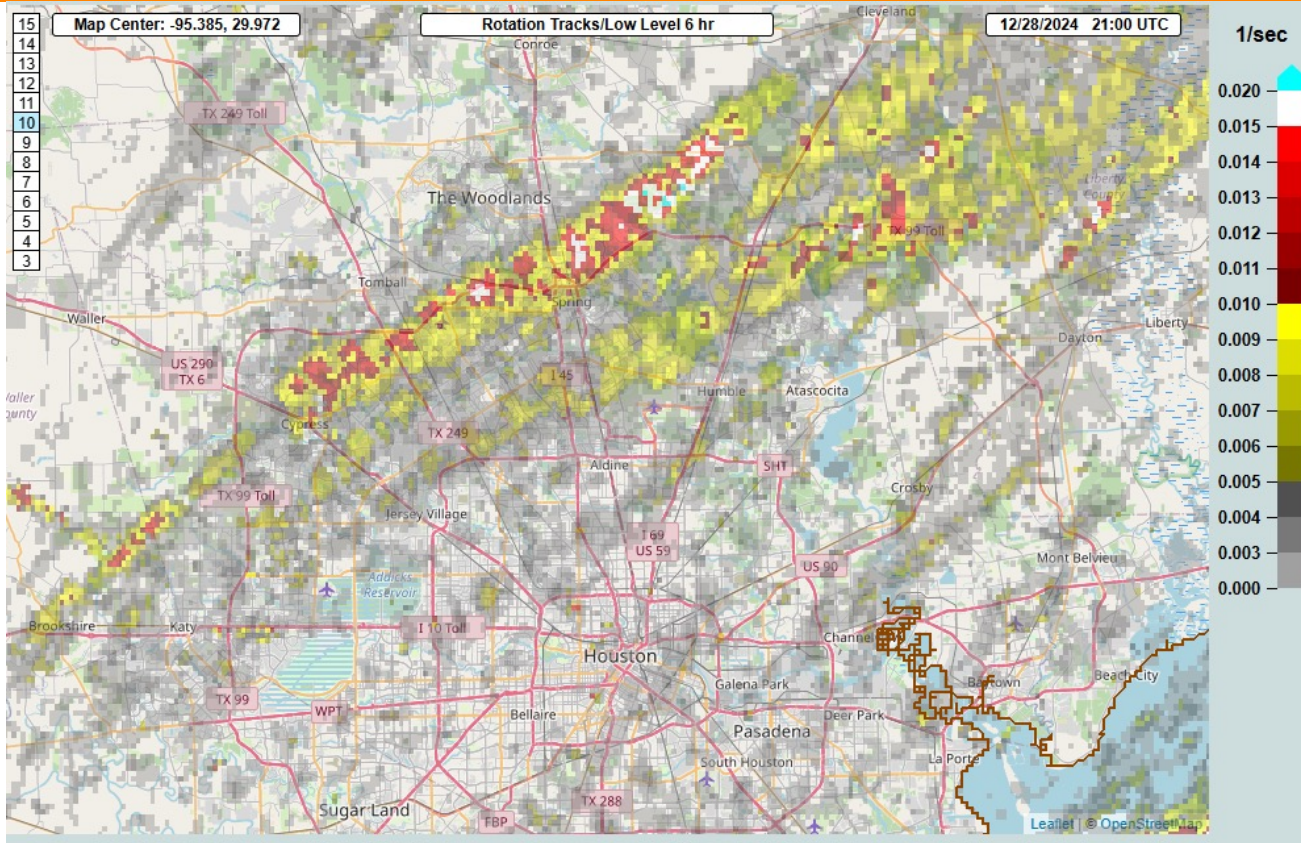


Rotation Paths



COOPERATION | COMMUNICATION | COORDINATION | COLLABORATION

Rotation Paths



COOPERATION | COMMUNICATION | COORDINATION | COLLABORATION

Situational Brief

Storm Reports

COOPERATION | COMMUNICATION | COORDINATION | COLLABORATION



Storm Reports

Location	County	Report
5 NNW Katy	Waller	Tornado damage in a mobile home park near Noel Lane. Cars flipped over. (HGX)
1 W Cypress	Harris	Sighted near the intersection of Highway 290 and Spring Cypress Road. (HGX)
5 NE Porter Heights	Montgomery	Mobile homes heavily damaged or destroyed. Brick home with roof completely removed. East Montgomery Fire Department hit... with bay doors blown in and metal roof peeled (HGX)

Storm Reports

Location	County	Report
3 WNW Splendora	Montgomery	Tornado sighted near the FM 2090 and Splendora High School area with a lot of debris. (HGX)
3 WSW Hillcrest	Brazoria	Multiple homes destroyed between Alvin and Liverpool (near CR 191A). Substantial debris on parts of SH 35. (HGX)
3 ENE Dickinson	Galveston	Multiple homes damaged in and around the Dickinson area. (HGX)

Storm Reports

Location	County	Report
2 E Bacliff	GMZ335	Roof damage to a home near the Bayshore Park area. (HGX)
8 S Anahuac	Chambers	A car was thrown by a tornado near Smith Point. Possible injuries. (HGX)
7 N High Island	Chambers	Multiple powerlines downed along Highway 124. (HGX)

Situational Brief

Requests for Assistance

COOPERATION | COMMUNICATION | COORDINATION | COLLABORATION



COOPERATION | COMMUNICATION | COORDINATION | COLLABORATION



TGCR
VOAD

Montgomery County

- Neighborhood at porter lane and Youpon, FM 1485 at Pickering
- FM 1314 at 99
- Old Houston at Village Way
- 17900 block of Country Place Drive, Conroe (unincorporated)
- 16900 block of Pickering, Conroe (unincorporated – Grangerland area)
- 16400 block of Porter Lane, Porter
- 16800 block of Live Oak Branch Dr. – Porter
- 19000 block of Big Oak Drive – Conroe
- 17300 block of Bent Pine Drive – Conroe

Course of Action Period Objectives

COOPERATION | COMMUNICATION | COORDINATION | COLLABORATION



TGCR
VOAD

Course of Action / Objectives

- 1. Build our Situational Awareness**
 - Reports from the Jurisdictions, RFAs
 - iSTAT
 - SitReps - Daily reporting
- 2. Support Humanitarian & Cleanup Efforts**
 - Volunteer Support
- 3. Strategic Response**
 - Safety
 - BE STRATEGIC!
- 4. Manage Resources**
 - Leave no individual, family, or community behind
 - TGCRVOAD to identify underserved communities
- 5. Transition to the LTRC**

Structural Integrity

large cracks in walls or foundations
Sagging roofs
uneven floors
leaning walls
visible damage to support beams
missing shingles, damaged flashing, broken rafters
water stains on ceilings
signs of shifting or settling (windows, doors)

if you see any of these, consult a professional engineer or building inspector for a thorough evaluation.

Reports from Jurisdictions

Please State Your Name and Jurisdiction
Requests for Assistance

COOPERATION | COMMUNICATION | COORDINATION | COLLABORATION

Reports from Members and Guests

**Please State your Name and Organization
Activities, Unmet Needs, Resources**

COOPERATION | COMMUNICATION | COORDINATION | COLLABORATION



Texas Gulf Coast Regional Voluntary Organizations Active in Disaster

COOPERATION | COMMUNICATION | COORDINATION | COLLABORATION

TGCRVOAD

chair.tgcrvoad@icloud.com

TDEM R4 VAL

Tonya.Clarke@tdem.texas.gov

COOPERATION | COMMUNICATION | COORDINATION | COLLABORATION



**IT'S A MARATHON,
NOT A SPRINT**

